

O. C. Wilbur, Jr.

Billiard Cue Tip.

No. 110,883.

Patented Jan. 10, 1871.

Fig. 1.

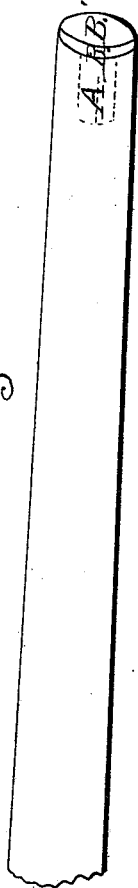


Fig. 2.

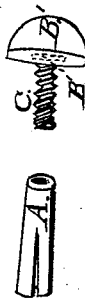
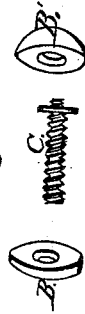


Fig. 3.



Witnesses:

Chas. L. Spencer
J. Walter Lester

Inventor:

O. C. Wilbur, Jr.

UNITED STATES PATENT OFFICE.

OLIVER C. WILBUR, JR., OF PROVIDENCE, RHODE ISLAND.

IMPROVEMENT IN FASTENINGS FOR THE TIPS OF BILLIARD-CUES.

Specification forming part of Letters Patent No. **110,883**, dated January 10, 1871.

To all whom it may concern:

Be it known that I, OLIVER C. WILBUR, Jr., of the city and county of Providence, in the State of Rhode Island, have invented a new and useful Improvement in the Mode of Fastening Tips on Billiard-Cues; and I do hereby declare that the following is a full, clear, and exact description of the same, reference being had to the annexed drawing, making a part of this specification, in which—

Figure 1 represents the end of a billiard-cue with my improved tip attached. Figs. 2 and 3 are detailed parts.

My invention consists in the mode of fastening tips on billiard-cues, to be easily attached without the use of cement or glue, and removed at pleasure without injury.

To enable others skilled in the art to manufacture and use my invention, I will proceed to describe its construction and operation.

A, Fig. 2, is a metallic socket, split at one end longitudinally, and opened to form a spring in securing it in the end of a billiard-cue.

B B', Fig. 3, are two pieces of leather, made with countersunk holes for the head of screw C, and when the leathers are fastened together, as represented in Fig. 2, (having screw C attached,) it forms a tip, to be screwed to

socket A, a screw being cut in the socket to match. The leathers may be cemented or glued together, as well as screwed on the threads of screw C. A short screw is made on the head of C, to secure B' more firm.

To use my invention a hole is made in the end of a billiard-cue, the socket A is sprung or screwed into this hole; bring the end of socket A even or flush with the end of the cue. The end of screw C is entered and turned into the socket, bringing the tip hard against the end of the cue, as shown in Fig. 1, thus securing the tip, and making it firm to resist the blows in playing the game of billiards.

I am aware tips have been made and fastened to billiard-cues before my invention.

My invention relates to the mode of fastening screw C to the leathers B B', in connection with socket A.

What I claim as my invention, and desire to secure by Letters Patent of the United States, is—

The split socket A, in combination with a screw-tip, C, all as herein described, and for the purpose specified.

OLIVER C. WILBUR, JR.

Witnesses:

CHAS. L. SPENCER,
J. ERASTUS LESTER.