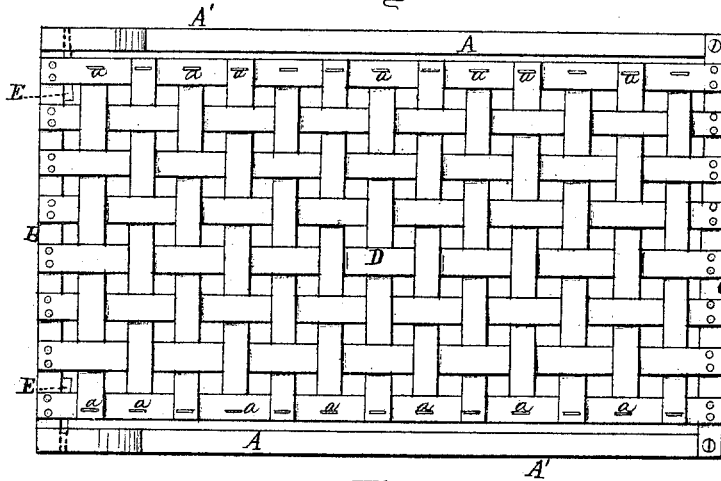


*Y. Bell,*  
*Bed Bottom.*

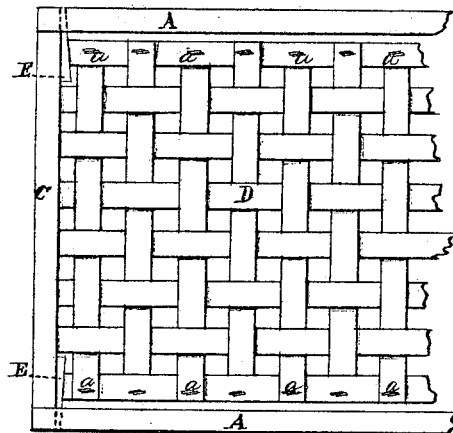
*No. 111,807.*

*Patented Feb. 14. 1871.*

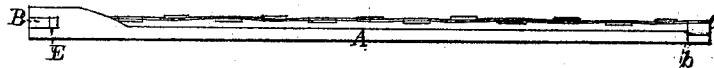
*Fig. 1.*



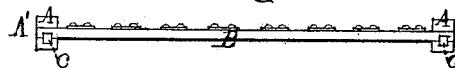
*Fig. 2.*



*Fig. 3.*



*Fig. 4.*



**Inventor.**

*Yas. Bell.*  
*Per Burridge & Co*  
*Attys*  
*Cleveland Ohio.*

**Witnesses.**

*W. H. Burridge*  
*D. L. Humphrey.*

# United States Patent Office.

VAN BELL, OF SEVILLE, OHIO.

Letters Patent No. 111,807, dated February 14, 1871.

## IMPROVEMENT IN BED-BOTTOMS.

The Schedule referred to in these Letters Patent and making part of the same.

*To all whom it may concern:*

Be it known that I, VAN BELL, of Seville, in the county of Medina and State of Ohio, have invented certain new and useful Improvements in Bed-Bottoms, of which the following is a description, reference being had to the accompanying drawing making part of this specification.

Figure 1 is a top view of the bed-bottom.

Figure 2 is a view of the under side of the same.

Figure 3 is a side view.

Figure 4, an end view.

Like letters of reference refer to like parts in the different views.

The nature of this invention relates to a splint bed-bottom and the frame thereof, said bottom being attached thereto at the ends, but unsupported at the sides, thereby increasing the elasticity of the same as hereinafter described.

In the drawing—

A A represent the side-pieces of the frame A', to which are secured the ends B C, with the slat-bottom D firmly attached thereon. Said bottom is constructed of interwoven slats, having the ends of each cross-splint or slat securely fastened to the outside ones by the staples *a* or their equivalents.

It will be observed that the bottom D is unsupported at the sides by the frame or otherwise. This affords a greater degree of elasticity and renders it much more springy than if said bottom were attached to or supported by the sides of the frame.

The manner of constructing the frame is readily seen on looking at figs. 3 and 4, where it will be observed that the ends of the side pieces at the head of frame are enlarged. This admits of the end piece B being fitted therein as shown, and secured in place by means of the wedges or keys I.

These wedges also serve as a means by which, if necessary, the slat bottom may be straightened or

stretched to an even surface, should it become sagged after being used for a length of time, and is as follows:

The wedges E are driven further through the sides A, forcing the end piece B along in advance of them. This draws or straightens the bottom D, which is attached to said piece B at one end, and at the other to the end piece C.

Said end is prevented from moving or slipping longitudinally by the shoulder *b*, fig. 3, formed on the side pieces A A, and against which the end C closely rests.

The frame is held from spreading laterally at the head by means of the pins or dowels *c*, fig. 4, used as fasteners for the ends of side pieces A A, and those of the end B of the frame, but which do not prevent nor interfere with the longitudinal movement above described.

It will be obvious that a frame put together in the manner stated will remain firm and durable, the several pieces comprising it being secured to each other in such a way as not to admit of any sliding or working from their proper place while the frame is in use, and should the slat bottom fastened thereon become dented or sagged too much, it may be reversed, turned the under side up, and used just the same.

### *Claim.*

What I claim as my improvement, and desire to secure by Letters Patent, is—

The combination of the splint bottom D and adjustable frame A, provided with the keys E and dowels constructed and arranged in relation to each other substantially as and for the purpose set forth.

VAN BELL.

Witnesses:

W. H. BURRIDGE,  
J. B. SHANNON.