

W. H. LOVEJOY.
MODE OF LASTING SHOES.

No. 112,057.

Patented Feb. 21, 1871.

Fig 1.

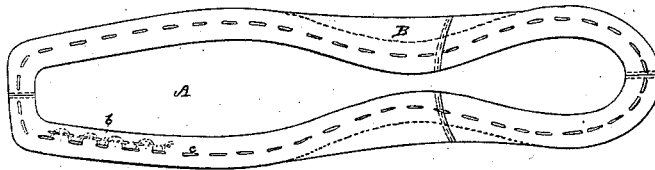


Fig 2.

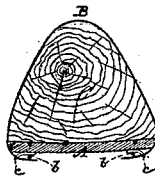
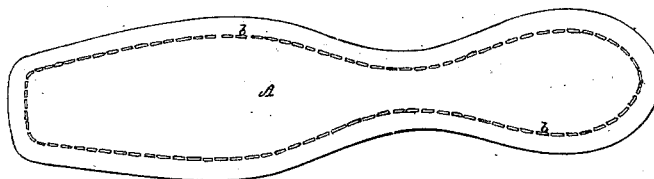


Fig 3.



Witnesses

L. N. Piper

L. N. Hallett

William H. Lovejoy

by his attorney

R. M. Ledy

United States Patent Office.

WILLIAM H. LOVEJOY, OF LOWELL, ASSIGNOR TO HIMSELF AND CHRISTOPHER ROBINSON, OF LYNN, MASSACHUSETTS.

Letters Patent No. 112,657, dated February 21, 1871.

IMPROVEMENT IN THE MODES OF LASTING SHOES.

The Schedule referred to in these Letters Patent and making part of the same.

To all persons to whom these presents may come:

Be it known that I, WILLIAM H. LOVEJOY, late of Lynn, but now of Lowell, of the State of Massachusetts, have invented a new and useful Improvement in Lasting Shoes, or Connecting their Uppers and Inner Soles; and do hereby declare the same to be fully described in the following specification and represented in the accompanying drawing, of which—

Figure 1 denotes a bottom view of the upper and inside of a shoe as lasted or connected by my method of procedure.

Figure 2 is a transverse section of such.

Figure 3 is a view of the insole as prepared for being stitched or connected to the upper.

In carrying out my invention I first, by a sewing-machine or by other means of effecting sewing, sew through the insole a line or range of stitches parallel to its outer edge, and at such distance therefrom as may be desirable, such sewing being carried around the entire sole.

In fig. 2 A denotes the insole, and b, the range or line of sewing.

Next the insole A, so prepared, is to be placed with the upper B on a last, C, in the usual manner, and

the said upper is to be drawn upon the last and insole, and connected with the latter by a range of loops or sewing, c, carried through the upper and the loops or stitches of the range of sewing b previously put into the insole. In this way the sewing of the upper is not extended through the insole, according to the ordinary way of connecting the two, but goes through the range of sewing previously laid in such insole, and in consequence thereof is held much firmer to the insole than usual.

My improvement enables me to employ ordinary split leather for insoles, such as would not be strong enough to resist the strain of sewing when going through the upper and the insole in the common manner heretofore practiced.

What, therefore, I claim as my invention is—

The improved mode of connecting the upper to the insole, viz., by the two ranges of sewing, one of which is carried through the other and the upper, and the other through the insole alone, as set forth.

WILLIAM H. LOVEJOY.

Witnesses:

R. H. EDDY,
J. R. SNOW.