

J. H. Scott,
Stove Fire Shelf.
No. 112,290. Patented Feb. 28, 1871.

fig. 3.

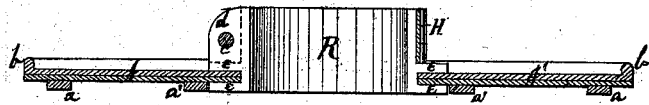


fig. 2.

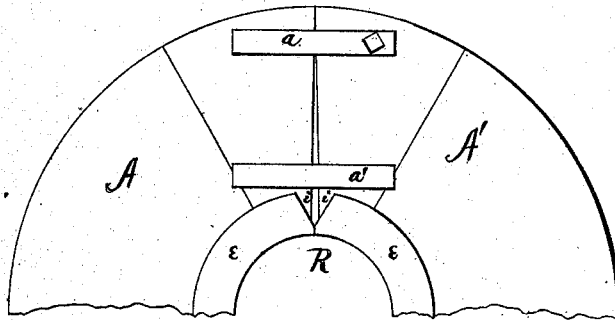
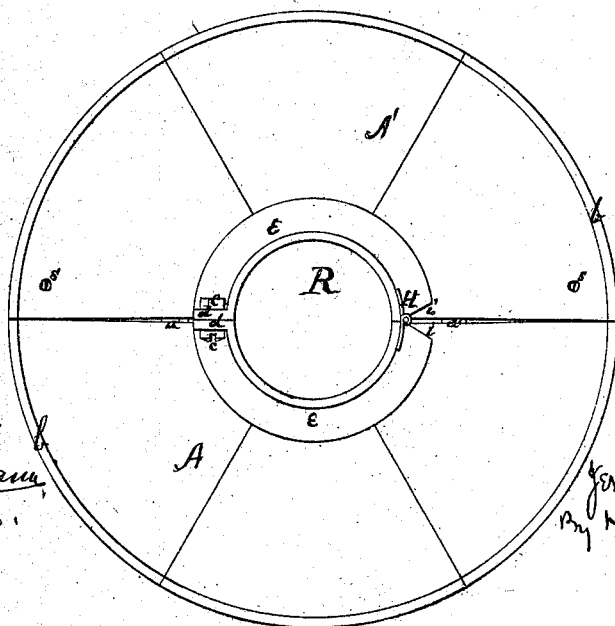


fig. 1.



Witnesses:
Nicholas Haymann,
Dr. K. G. G. G. G.

Inventor:
James D. Scott,
By N. H. & C. G. G. G.

United States Patent Office.

JEROME D. SCOTT, OF FRIENDSHIP, NEW YORK.

Letters Patent No. 112,290, dated February 28, 1871.

IMPROVEMENT IN STOVE-PIPE SHELVES.

The Schedule referred to in these Letters Patent and making part of the same.

To all whom it may concern :

Be it known that I, JEROME D. SCOTT, of Friendship, in the county of Allegany and State of New York, have invented certain new and useful Improvements in Stove-pipe Shelves; and I do hereby declare the following to be a full, clear, and exact description of the same, reference being had to the accompanying drawing forming part of this specification, in which—

Figure 1 is a top view;

Figure 2 is a bottom view; and

Figure 3, a vertical transverse section.

Similar letters of reference in the drawing indicate corresponding parts.

The object of this invention is to provide for public use a cheap and convenient shelf, which can be readily attached to or detached from the stove-pipe without separating the sections of pipe.

To accomplish this purpose I construct the shelf in two semicircular pieces, *A A'*, which are united together by means of arms, *a a'*, on each side of the center.

The arm *a* is cast with or permanently fixed to the part *A*, and projects under the part *A'* so as to support the latter, while the arm *a'*, fixed to the part *A'*, extends in a similar manner under the part *A* for the purpose of supporting it in turn.

The parts *A A'* may be attached to the ends of the arms *a a'* beneath them, by means of screws, *s s*, for the purpose of connecting the two semicircular plates firmly together, and preventing them from warping or bending under the weight of the vessels set upon them.

A rim or flange, *b*, is cast or turned up around the periphery of the shelf, to prevent said vessels from slipping off.

The whole surface of the shelf may be foraminated, or provided with openings of any design which the taste of the manufacturer approves.

Thus constructed the shelf is attached to the stove-pipe by means of an independent supporting-ring, *R*, made in two semi-annular segments, which are hinged together on one side, as shown at *H*, and, when in

use, are fastened together at the other side by means of a screw-bolt and nut, *c*, passing through vertical flanges, *d d*, formed at the ends of the segment for the purpose.

Two parallel horizontal flanges, *e e'*, are also formed on the convex surface of the ring, for the purpose of receiving and holding the inner edge of the plates *A A'*.

These flanges are cut away in rear of the hinge, as shown at *i i*, to admit of the rings being opened upon said hinge for the purpose of attaching it to or detaching it from the pipe.

It will be observed that the flanges are constructed around the lower edge of the ring, leaving a sufficient space above them for the hinge *H*, and the flanges *d d*, and bolt *c*. The inner surface of the ring is smooth and adapted to fit closely to the pipe.

It will be observed that the supporting-ring is independent of the shelf, and, by means of its hinge and fastening can be applied to the pipe without separating the sections thereof, after which the segments of the shelf are to be inserted between the flanges, and their edges brought properly together and connected by the screws *s s* and arms *a a'*.

When thus in position the shelf rotates on the ring independently of the latter, so that it can be freely turned in any position, however tightly the ring may be fastened to the pipe.

The ring can be adjusted to pipes of slightly different sizes by making the screw-rod *c* of suitable length.

Having thus described my invention,

What I claim as new therein, and desire to secure by Letters Patent, is—

The combination of the two plates *A A'*, connected together by means of arms *a a'* and screws *s s*, with the independent ring *R*, constructed of two segments hinged together at one end and fastened at the other by the screw-bolt *c*, substantially as and for the purposes set forth.

JEROME D. SCOTT.

Witnesses:

WM. H. KING,

A. J. WELLMAN.