

W. A. Hough,
Feed Bag.

No. 112,458.

Patented Mar. 7, 1871.

Fig. 1.

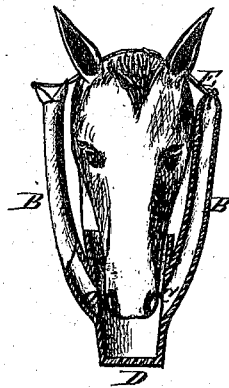
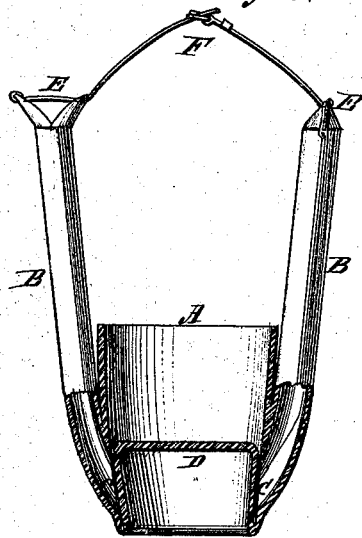


Fig. 2.



Witnesses:

John Beecher
L. D. Moabee

Inventor:

W. A. Hough
PER *Wm. H. O.*
Attorneys.

UNITED STATES PATENT OFFICE.

WALTER A. HOUGH, OF SOUTH BUTLER, NEW YORK.

IMPROVEMENT IN FEED-BAGS FOR HORSES.

Specification forming part of Letters Patent No. **112,458**, dated March 7, 1871.

To all whom it may concern:

Be it known that I, WALTER A. HOUGH, of South Butler, in the county of Wayne and State of New York, have invented a new and useful Improvement in Feed-Bags for Horses; and I do hereby declare that the following is a full, clear, and exact description thereof, which will enable others skilled in the art to make and use the same, reference being had to the accompanying drawing, forming part of this specification.

This invention relates to a new and useful improvement in feed-bags for horses; and consists in making the bag self-supplying by means of one or more reservoirs, the discharge-orifices of which reservoirs are closed by a valve or valves, the construction being as hereinafter more fully described.

In the accompanying drawing, Figure 1 represents a sectional front view, showing the bag as attached to the horse's head and in use. Fig. 2 is also a sectional front view, showing the bag detached, and with the discharge-orifices of the reservoir closed by the bottom of the bag, which is made to serve as a valve for that purpose.

Similar letters of reference indicate corresponding parts.

A is the bag proper, or place for the horse's nose. B B are the reservoirs, into which the grain is introduced. These reservoir-tubes communicate with A, so as to discharge the grain into the bottom of the bag through the orifices C C, as seen in Fig. 1.

D is the bottom portion of the bag, which, when the bag is not in use and the reservoirs B B contain grain, may be pushed upward

inside, so as to close the orifices C C, as seen in Fig. 2. Any other suitable device may be employed for closing the connection of the reservoir with the bag A.

The upper ends of the reservoirs are provided with valvular covers, each consisting of two longitudinal sections of a hollow cone, as seen at E E, one of which is represented as closed and the other open.

F is the strap by which the bag is secured to the horse's head. The ends of this strap are attached to the outer portions of the conical covers, and pass through the inner portions, as seen, so that the weight of the bag will serve to draw the parts of the cover together and close them.

This feed-bag may be made of leather, canvas, or other suitable material, or of different materials combined, as may be found advisable.

The advantages of this mode of constructing feed-bags are many, and must be obvious to all.

Having thus described my invention, I claim as new and desire to secure by Letters Patent—

1. The feed-bag consisting of the parts A and B, arranged substantially as shown and described.

2. The strap F, in combination with the reservoir-tubes B B, provided with the valvular covers E E, arranged to operate as shown and described.

W. A. HOUGH.

Witnesses:

VIELE MEAD,
JOHN MCGONIGAL.