

*J. Hayden,*

*Shirt.*

*No. 113659.*

*Patented Apr. 11. 1871.*

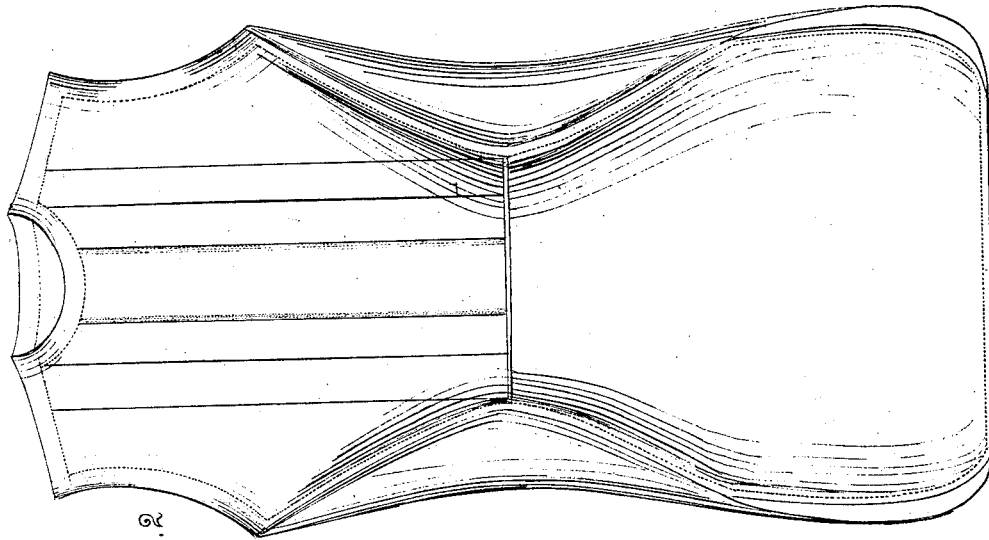


FIG. 2

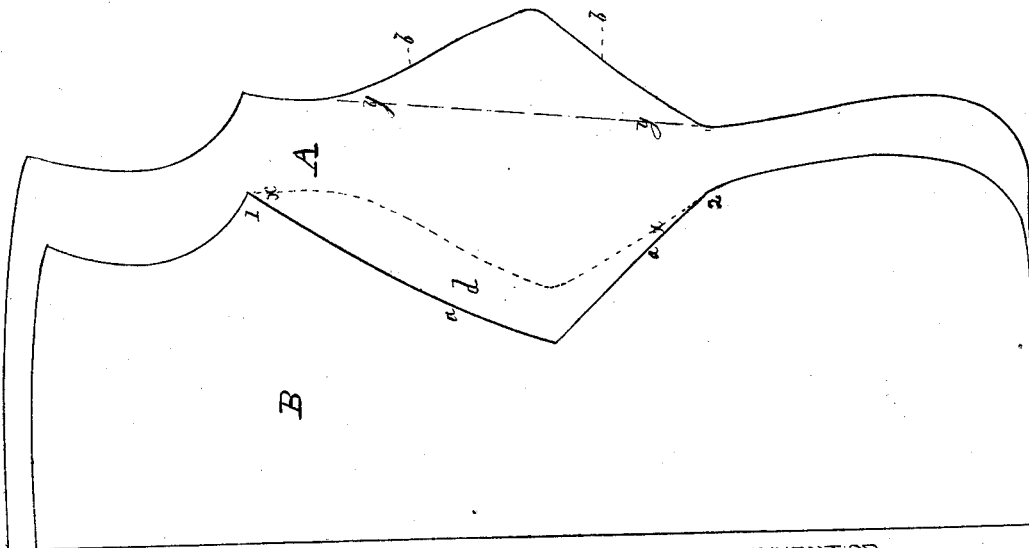


FIG. 1

WITNESSES.

*Thomas J. Dewley.*  
*Charles T. Stickney*

INVENTOR.

*James Hayden*  
*By his Attorney*  
*Stephen W. Stick*

# United States Patent Office.

JAMES HAYDEN, OF PHILADELPHIA, PENNSYLVANIA.

Letters Patent No. 113,659, dated April 11, 1871.

## IMPROVEMENT IN SHIRTS.

The Schedule referred to in these Letters Patent and making part of the same.

I, JAMES HAYDEN, of the city of Philadelphia and State of Pennsylvania, have invented certain Improvements in Shirts, of which the following is a specification.

My invention has for its object a smooth fitting of the shirt on the breast.

This I accomplish by cutting the edges of the front of the shirt on a bias running inward, and cutting the edges of the back also on a bias running outward, in such a manner that when folded so as to bring them together at the arm-pit hole, and at the upper end of the side slit there shall be an opening from point to point, so that when the edges are sewed together the front will be so drawn as to incline it toward the back and thus cause a smooth fitting of the bosom.

I vary the bias of the cutting of the edges, both of the front and back parts of the shirt, to suit the different forms of the persons they are intended for.

To enable others skilled in the art to which my invention appertains to make a practical application thereof, I will now give a full description of the same.

In the accompanying drawing which makes a part of this specification—

Figure 1 is a view of a half of the back A, and front B of the body of a shirt.

Figure 2 is a front view of the shirt when the front and back pieces are sewed together.

Like letters in both figures indicate the same parts.

A represents the half of the back part of the shirt, and

B the corresponding front part.

The edge *a* of the piece B is cut on a bias inward, between the point 1 at the arm-pit and the point 2 at or about the commencement of the side slit. The other side of the front is cut in the same manner.

The edge *b* of the back piece A is cut bias in a re-

verse order, the bias running outward, as seen in full lines in fig. 1. But the bias in the back piece is less than that of the front piece, so that when it is folded over, as represented by the dotted line *x x*, the two edges have a space, *d*, between them.

Then, when the edges are sewed together, as seen in fig. 2, the lower part of the bosom is drawn or inclined backward and in at the sides, whereby the bosom is caused to fit snugly.

The degree of the bias and the difference between that of the back and front pieces A B should vary to suit different persons, so as to get the full advantage of the improvement. Yet in many instances it is not required to be nearly so great as shown in the drawing.

The bias may be formed in either straight or curved lines; yet curved forms in cutting give the most complete fit to the bosom.

The bias of the back may be made either by the cutting of the back piece A or by sewing separate pieces to the same, as represented by the dotted lines *y y*.

What I claim as my invention, and desire to secure by Letters Patent, is—

As an article of manufacture, a shirt having the front and back pieces B and A shaped at the sides in the manner substantially as shown and described, and for the purpose set forth.

In testimony that the above is my invention I have hereunto set my hand and affixed my seal this 25th day of February, 1871.

JAMES HAYDEN. [L. s.]

Witnesses:

THOMAS J. BEWLEY,  
STEPHEN USTICK.