

E. A. BELL.

Improvement in Adjustable Bevels.

No. 114,096.

Patented April 25, 1871.

Fig 1

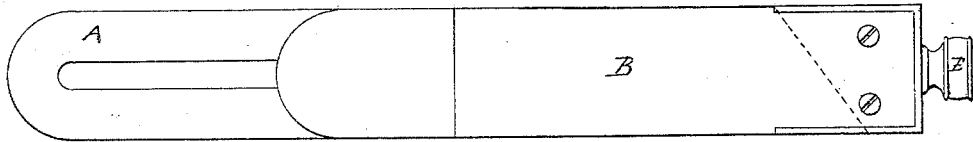


Fig 2

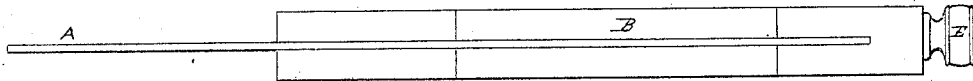


Fig 3

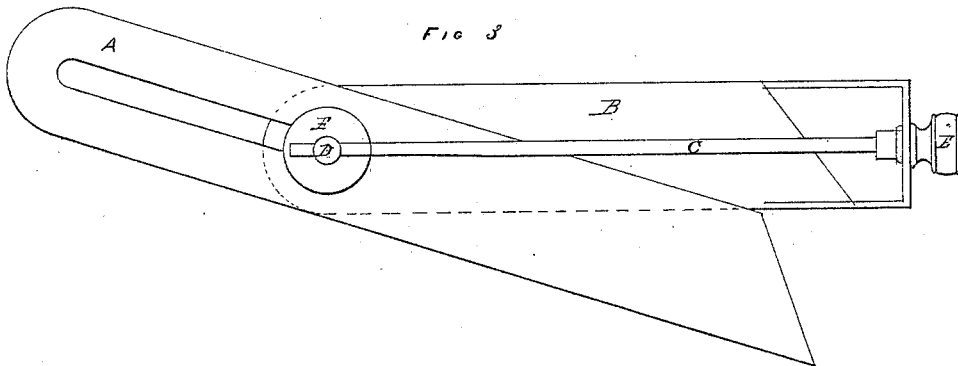


Fig 4

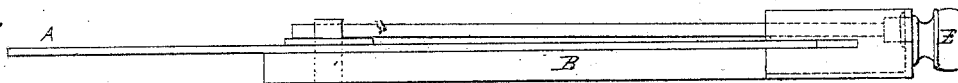


Fig. 5.

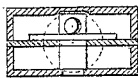
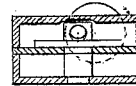


Fig. 6.



George Gibbons
Frank Prescott

Albert A. Bell

United States Patent Office.

ELBERT A. BELL, OF MERIDEN, CONNECTICUT.

Letters Patent No. 114,096, dated April 25, 1871.

IMPROVEMENT IN ADJUSTABLE BEVELS.

The Schedule referred to in these Letters Patent and making part of the same.

To all whom it may concern:

Be it known that I, ELBERT A. BELL, of Meriden, in the county of New Haven and State of Connecticut, have invented a new and useful Improvement in Carpenters' Bevel; and I do hereby declare that the following is a full and exact description of the same, reference being had to the accompanying drawing and to the letters of reference marked thereon.

Figure 1 represents a side view of my improved bevel closed.

Figure 2 is a top view of the same.

Figure 3 is a partial section with the blade open, showing the manner in which the cam-rod is adjusted.

Figure 4 is a top view of fig. 3.

Figure 5 is an end section through $x y$, showing the cam in operation.

Figure 6 is the same, showing the cam when not in operation.

Similar letters of reference, where they occur in the separate views, indicate like parts.

My invention relates to an improvement in the tool called the carpenters' bevel, and consists in a device for holding the blade firmly in any position, without requiring any cavity or obstruction in the outer or working surface of the handle.

To enable others skilled in the art to make and use my invention, I will proceed to describe the same with reference to the accompanying drawing and the letters of reference marked thereon.

A is the blade, made in the usual way.

B is the handle, between the halves of which the blade closes.

The said handle is substantially bound at each end with metal, and presents four perfectly flat smooth surfaces, without any cavity or obstruction, while in

one portion of the handle, and extending lengthwise along the side of the blade, I place a rod, C, one end of which passes through the pivot D, upon which the blade swings, and the other end passes out at the back end of the handle, and is furnished with a thumb-nut, E.

The end of the rod which passes through the pivot D is made cam-shaped. One side bears upon the pivot, and the other upon a washer, F, on the blade, and by turning the said rod presses the washer down upon the blade with sufficient force to hold it in the position required.

In order to use as large a thumb-nut as possible, the rod C enters it a little out of the center, and is so arranged that when in operation the said nut will be brought directly in the center of the end of the whole handle.

When the rod C is turned back by means of the thumb-nut the washer F is released from the blade, which may be moved and set in any required angle.

Having thus fully described my invention,

What I claim as new and useful, and desire to secure by Letters Patent, is—

The method herein described of holding the adjustable blade of a bevel at the required angle, consisting of the cam-rod C, in combination with the washer or binder F, operating upon the blade in the manner and for the purpose substantially as herein specified.

This specification signed and witnessed this 28th day of November, 1870.

ELBERT A. BELL.

Witnesses:

GEORGE GIBBONS,
FRANK PRESCOTT.