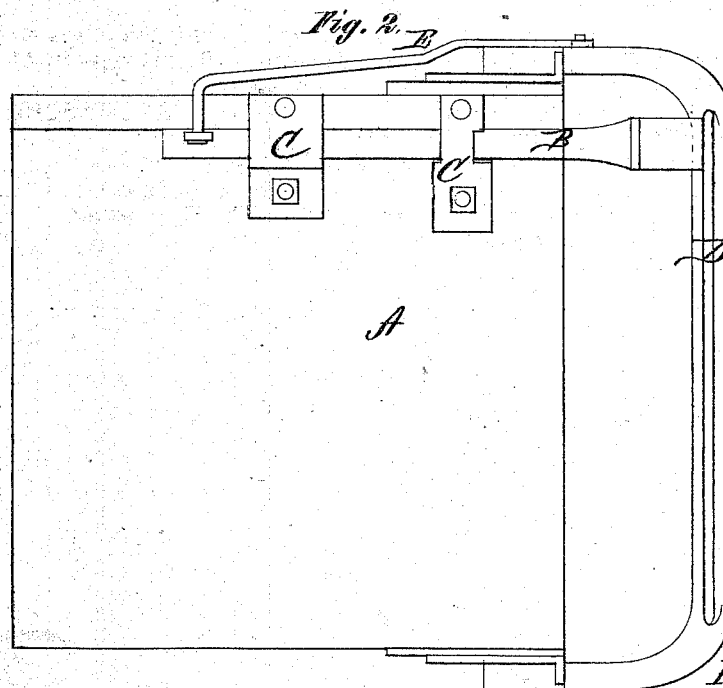
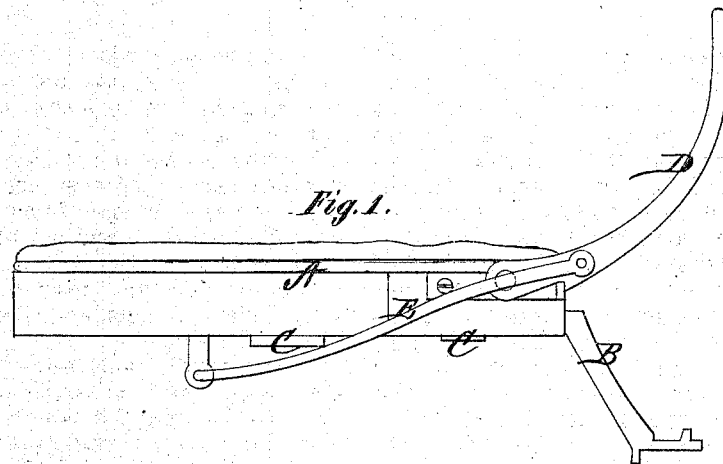


S. W. BEACH.

Improvement in Adjustable Carriage-Seats.

No. 115,152.

Patented May 23, 1871.



Witnesses

John A. Ellis
J. R. White

Inventor

Sylvester W. Beach,
Per,

J. H. Alexander
Atty.

UNITED STATES PATENT OFFICE.

SYLVESTER W. BEACH, OF YPSILANTI, MICHIGAN.

IMPROVEMENT IN ADJUSTABLE CARRIAGE-SEATS.

Specification forming part of Letters Patent No. 115,152, dated May 23, 1871.

To all whom it may concern:

Be it known that I, SYLVESTER W. BEACH, of Ypsilanti, in the county of Washtenaw and State of Michigan, have invented certain new and useful Improvements in Adjustable Carriage Seats; and I do hereby declare that the following is a full, clear, and exact description thereof, reference being had to the accompanying drawing and the letters of reference marked thereon which form a part of this specification.

My present invention is intended as an improvement upon the "adjustable carriage-seat" for which Letters Patent Nos. 104,248 and 113,387 have been granted to me; and it consists in connecting the handle and rests of the front seat in such a way as to move the rests by throwing the handles in and out, and thus doing away with a lever under the seat.

In order to enable others skilled in the art to which my invention appertains to make and use the same, I will now proceed to describe its construction and operation, referring to the annexed drawing, in which—

Figure 1 is a front view, and Fig. 2 a bottom view of a portion of the front seat.

A represents the front seat, with the rest B sliding in guides or boxes C C on the under side thereof. The inner end of the rest B is by a rod or pitman, E, connected with the handle D, which is pivoted to the seat.

It will be seen that by throwing the handle in the rest B is also drawn inward, and by throwing the handle out the rest is also forced outward in position.

By thus connecting the handles and rests I dispense with the lever used in the former cases and save one movement, as the handles must be moved in and out to effect a change in any event.

Having thus fully described my invention, what I claim as new, and desire to secure by Letters Patent, is—

1. The handles and rests of the front seat of a carriage, when the same are connected, so that by throwing the handles in and out the rests are moved in the proper direction, substantially as herein set forth.

2. The combination of the rest B, handle D, and connecting-rod E, constructed and arranged substantially as and for the purposes herein set forth.

In testimony that I claim the foregoing as my own, I affix my signature in presence of two witnesses.

SYLVESTER W. BEACH.

Witnesses:

ALMON PERKINS,
S. M. CUTCHEON.