

Improvement in Stove Waiters and Shelves.

No. 115,923.

Fig. 1.

Patented June 13, 1871.

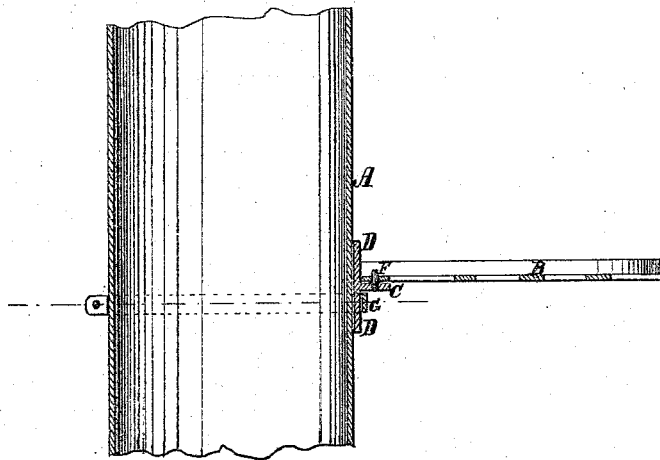
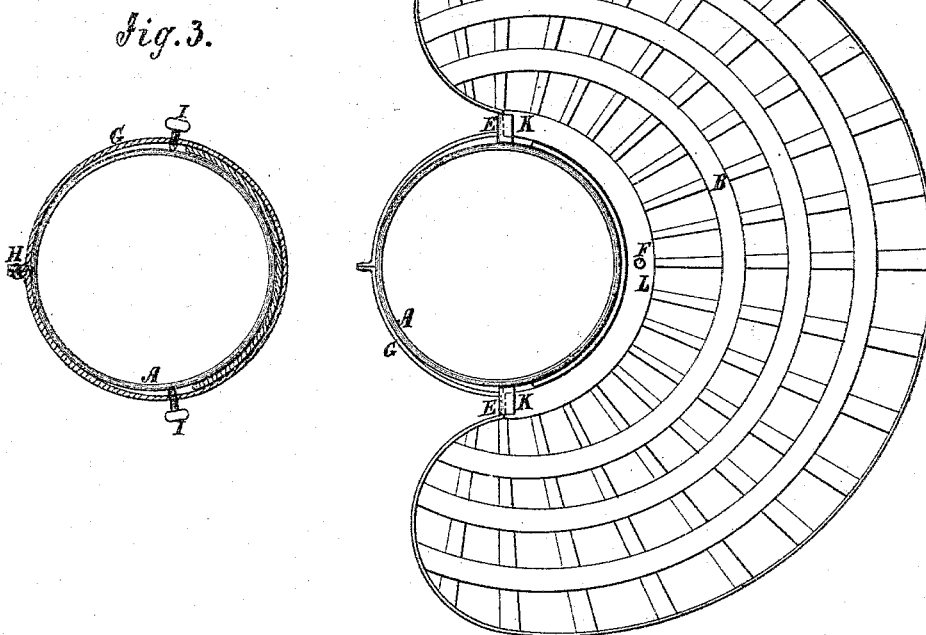


Fig. 2.



Witnesses:

A Bennekenhof
Wm. H. C. Smith.

Inventor:

C. D. Wright.

PER

Muniz & Co
Attorneys.

UNITED STATES PATENT OFFICE.

CHARLES D. WRIGHT, OF LEESVILLE, CONNECTICUT.

IMPROVEMENT IN STOVE WAITERS OR SHELVES.

Specification forming part of Letters Patent No. 115,923, dated June 13, 1871.

To all whom it may concern:

Be it known that I, CHARLES D. WRIGHT, of Leesville, in the county of Middlesex and State of Connecticut, have invented a new and Improved Stove-Waiter; and I do hereby declare that the following is a full, clear, and exact description thereof, which will enable others skilled in the art to make and use the same, reference being had to the accompanying drawing forming part of this specification.

My invention relates to waiters, toasters, or shelves for attachment to stove-pipes; and consists in an improvement connected therewith, which will be first fully described and then clearly pointed out in the claim. The invention consists in the manner of attaching the shelf to the pipe.

Figure 1 is a sectional elevation of a section of pipe and the waiter. Fig. 2 is a plan view of the same; and Fig. 3 is a horizontal section on the line *x x* of Fig. 1.

Similar letters of reference indicate corresponding parts.

A is the section of stove-pipe, and B is the shelf or waiter. C is a semicircular horizontal collar projecting from a wide vertical semicircular rim or yoke, D, about midway between the top and bottom, and having the ends turned up, as shown at E, and a pin, F, rising from the center or thereabout. The said yoke D is clamped

to the pipe by a band, G, extending around the pipe and made fast by a clamp-screw, H, at the ends, which meet, and are suitably shaped for the purpose. The said band is also supported against falling down by the pointed set-screws I screwing through it against the pipe. The waiter, which is of the ordinary half-circular form or thereabout, with a semicircular cavity in the side connecting with the pipe, is fitted at the ends *k* of the wall fitting under the hooked parts E of the yoke, and has a hole at L which receives the pin F when applied, by which it is held in place, so that it may be lifted off and put on with the greatest facility. The waiter has a flange, L, around the outer edge to prevent articles placed on it from falling off, and is made of radial and curved bars; or it may be of cast metal with large openings, so that it may be used over the stove for toasting and the like.

Having thus described my invention, I claim as new and desire to secure by Letters Patent—

In combination with toasting-shelf, the yoke C D E F, band G, and screws H I I, constructed and arranged as and for the purpose specified.

CHARLES D. WRIGHT.

Witnesses:

WILBUR F. WRIGHT,
CHARLES B. WRIGHT.