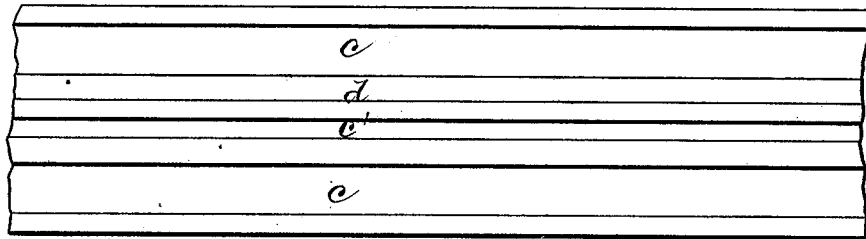


A. F. TEMPLE.  
Fire-Kindler.

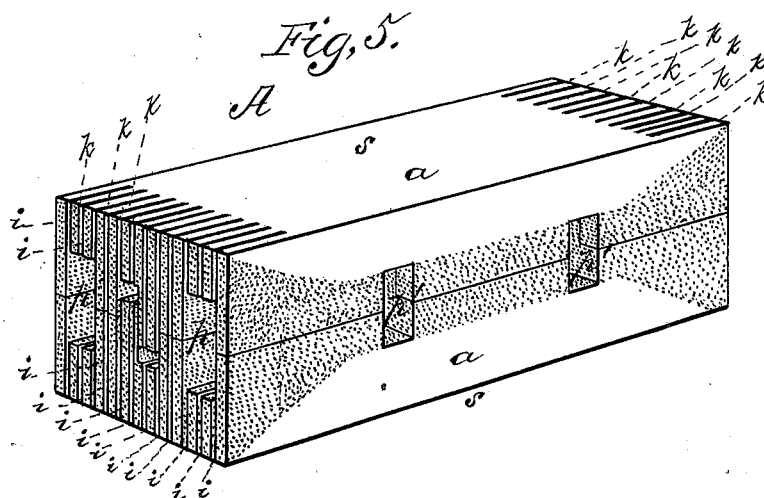
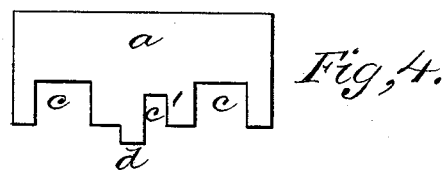
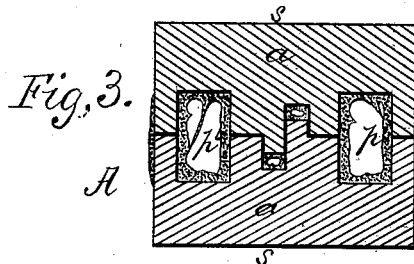
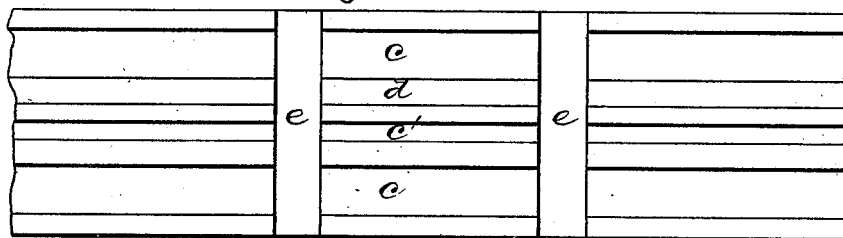
No. 214,969.

Patented April 29, 1879.

*Fig. 1.*



*Fig. 2.*



WITNESSES

*Millette Anderson.*  
*T. J. Chas.*

INVENTOR

*A. F. Temple,*  
*by E. W. Anderson.*

ATTORNEY

# UNITED STATES PATENT OFFICE.

ANSEL F. TEMPLE, OF MONTAGUE, MICHIGAN, ASSIGNOR TO WILLIAM F. TEMPLE, JR., OF BOSTON, MASSACHUSETTS.

## IMPROVEMENT IN FIRE-KINDLERS.

Specification forming part of Letters Patent No. **214,969**, dated April 29, 1879; application filed March 15, 1879.

### *To all whom it may concern:*

Be it known that I, ANSEL F. TEMPLE, of Montague, in the county of Muskegon and State of Michigan, have invented a new and valuable Improvement in Fire-Kindlers; and I do hereby declare that the following is a full, clear, and exact description of the construction and operation of the same, reference being had to the annexed drawings, making a part of this specification, and to the letters and figures of reference marked thereon.

Figure 1 of the drawings is a representation of a top view of the blank. Fig. 2 is a similar view of the blank complete. Fig. 5 is a perspective view of my fire-kindler complete. Fig. 3 is a cross-sectional view thereof, and Fig. 4 is an end view of one of the parts of the kindler.

This invention has relation to improvements in fire-kindlers; and the nature of the invention consists in a fire-kindler composed of two longitudinally and transversely grooved pieces of wood, the grooves in each piece corresponding in position to each other, and the ends of the said pieces being correspondingly kerfed, whereby when the said pieces are dipped, with their grooved surfaces downward, into an inflammable substance and put together with the said surfaces together, longitudinal and transverse draft-passages coated in their interiors with the said substance and kindling-surfaces will be formed and two uncoated surfaces afforded, as will be hereinafter more described.

In the annexed drawings, the letter A designates my improved fire-kindler, composed of two independent rectangular wooden blocks, *a*, having in their ends the saw-kerfs *i*, at about one-sixteenth of an inch apart, and of suitable depth. These blocks are of corresponding size, and the kerfs *i* coincide with each other. In one face of these blocks are cut or otherwise formed the longitudinal grooves *c*, near each edge; and in the space between the said grooves is made a groove, *c'*, of less width and depth, and a corresponding tongue, *d*. These blocks are also provided with transverse grooves *e*, preferably in corresponding positions, and when put together, as shown in Figs. 3 and 5, the tongue *d* of the one is

tightly received in the groove *c'* of the other. The grooves *c* form with each other the longitudinal draft-passages *p p*, the transverse grooves *e* form with each other the transverse air-passages *p'*, and the material between the kerfs *i* the kindling-points *k*.

The blocks are dipped, with their grooved faces downward, into an adhesive inflammable material sufficiently to coat the interior of the said grooves therewith, and are then set face to face. They are secured together by the cooling and setting of the inflammable substance, and also by the forcing of tongues *d* into grooves *c'*. The draft-passages *p* and *p'* are thus entirely covered with the said substance; but the flat sides *s* remain free, and permit the kindler to be handled without soiling or sticking to the fingers.

The kindler is used by applying a match to the points *k*, which, being covered partly or wholly with the inflammable substance, speedily take fire and communicate the flame to all parts of the same.

The blocks *a* are formed from a continuous blank, Fig. 1, sufficiently long to make many thereof, the said blank having formed therein, by a suitable mechanism, the grooves *c*, *c'*, and *e* and the tongue *d*. This blank (shown in Fig. 2) is cut into equal lengths—say of six inches—the ends of each length kerfed, and then dipped. They are then put together as aforesaid.

What I claim as new, and desire to secure by Letters Patent, is—

The fire-kindler composed of two longitudinally and transversely grooved wooden blocks, the grooves in each block corresponding to each other in position, and the ends of said blocks being correspondingly kerfed, the said blocks being dipped into an adhesive inflammable substance and stuck together, forming longitudinal and transverse draft-passages, substantially as specified.

In testimony that I claim the above I have hereunto subscribed my name in the presence of two witnesses.

ANSEL F. TEMPLE.

Witnesses:

WALTER C. MASI,  
M. P. CALLAN.