

J. G. PUGSLEY.  
Ankle-Supporters

No. 216,106.

Patented June 3, 1879.

FIG. 2

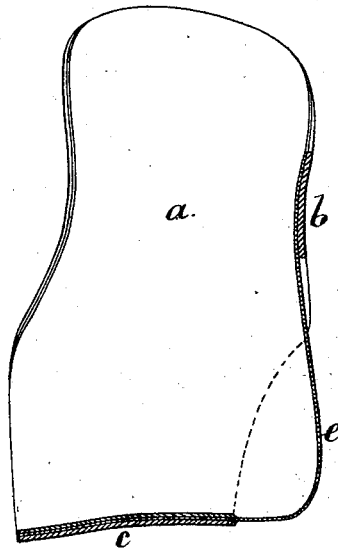
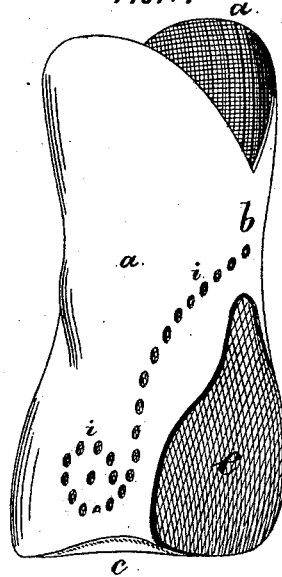


FIG. 1.



WITNESSES

Chas H Smith  
Geo T. Pinckney

INVENTOR

John G. Pugsley.  
per Lemuel W. Perrell atty

# UNITED STATES PATENT OFFICE.

JOHN G. PUGSLEY, OF BROOKLYN, E. D., NEW YORK, ASSIGNOR TO HIMSELF  
AND JOHN ENNIS, OF SAME PLACE.

## IMPROVEMENT IN ANKLE-SUPPORTERS.

Specification forming part of Letters Patent No. **216,106**, dated June 3, 1879; application filed  
April 4, 1879.

*To all whom it may concern:*

Be it known that I, JOHN G. PUGSLEY, of Brooklyn, E. D., in the county of Kings and State of New York, have invented an Improvement in Ankle-Supporters, of which the following is a specification.

In Letters Patent No. 212,261, granted to me, an ankle-supporter is shown in which the stiff material, such as leather or felt, comes up at each side of the ankle, and there is a vertical opening at the rear upper portion, but the heel portion is closed.

My present invention is an improvement upon the former device. In said patented ankle-supporter it often becomes necessary for the wearer to obtain a longer shoe, in consequence of the space occupied by the ankle-supporter at the heel. I find that the heel portion of the ankle-supporter can be removed without injury, because the sides of the supporter, when connected at the rear, strengthen the ankle, and hence that my improved supporter can be usually worn in the ordinary shoe of the person using the same.

In the drawings, Figure 1 is a perspective view of said ankle-supporter, and Fig. 2 is a vertical section of the same.

The supporter is made of leather, felt, cloth, or other suitable material, stiffened with glue, varnish, or equivalent material, and of the thickness necessary to obtain the required strength and stiffness, and it is usually preferable to line the supporter with flannel or stockinet.

The side portions *a a* are of a size and shape adapted to fit the sides of the foot and the ankle, the same being molded to shape, so as to be comfortable to the wearer. These sides are in one, extending around the back, so that the portion *b* unites the sides slightly above

the ankle-joint, and the portion *c*, that extends beneath the heel, becomes a connection between the sides *a a*.

By this construction the heel portion of the ankle-supporter is left open; hence there is nothing to increase the length of the foot and render a change of shoe necessary, and this is accomplished without detriment to the supporting qualities of the appliance.

The lining may be applied only to the inside of the stiff supporter; but I prefer to extend the same across the heel portion, as seen at *e*, because the same is thin, and occupies but little space, and becomes a protection against wear upon the stocking.

The rigid portion of the supporter is perforated, as seen at *i*, to allow for the escape of perspiration.

I claim as my invention—

1. The ankle-supporter consisting of the two portions *a a*, that extend at each side of the ankle, and are connected at the back above the ankle at *b*, and also beneath the heel at *c*, substantially as set forth.

2. An ankle-supporter having pieces *c* beneath the heel and sides *a* that are connected at the back, and in which the rear of the heel portion is open, for the purposes set forth.

3. In an ankle-supporter of rigid material, having sides that are connected at the upper back portion and across beneath the heel, the lining of flexible material extending across the opening at the rear of the heel, substantially as set forth.

Signed by me this 1st day of April, A. D. 1879.

J. G. PUGSLEY.

Witnesses:

GEO. T. PINCKNEY,  
WILLIAM G. MOTT.