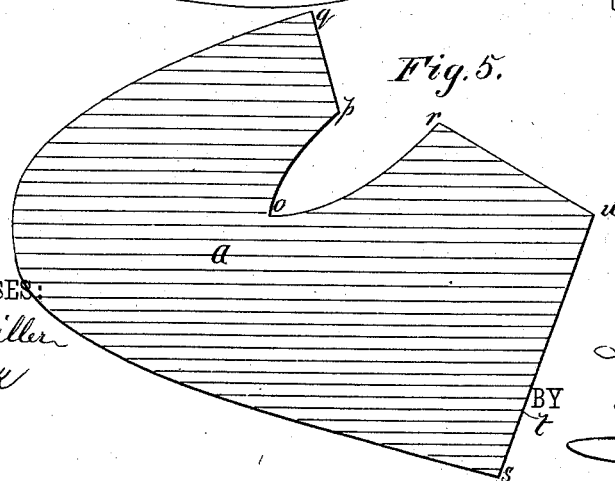
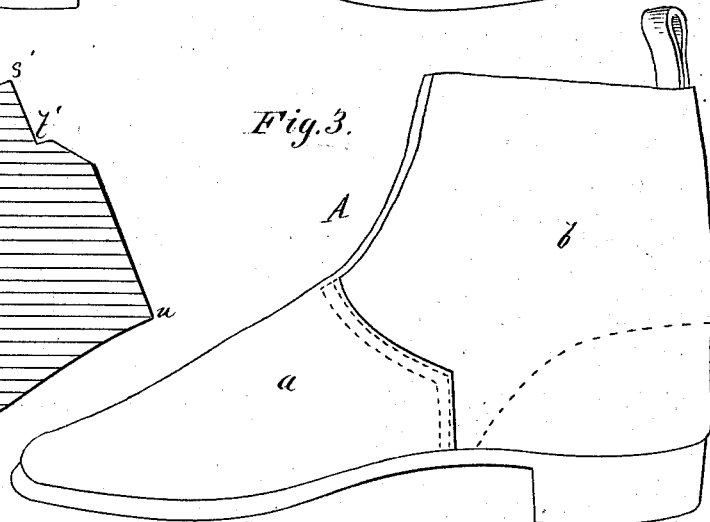
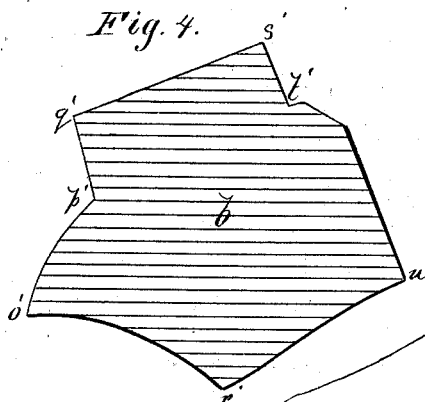
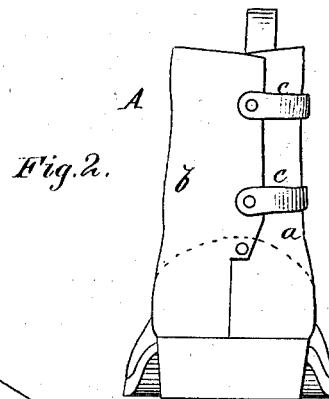
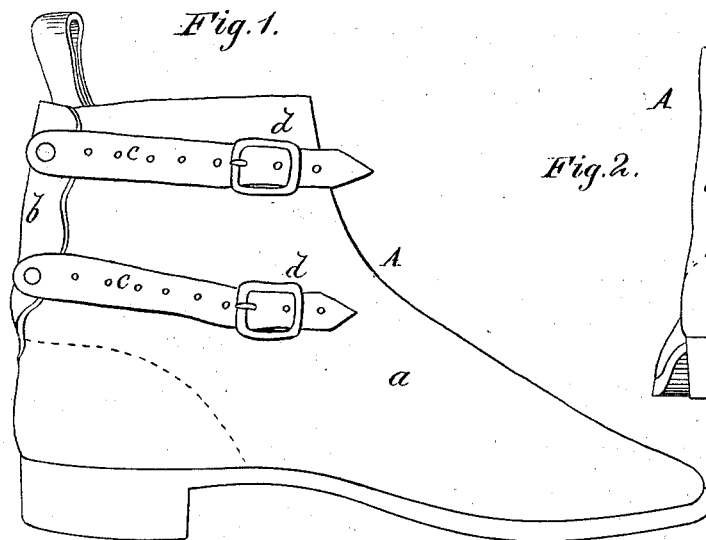


L. ROSE.
Shoes.

No. 216,220.

Patented June 3, 1879.



WITNESSES:

Henry N. Miller
C. Sedgwick

INVENTOR:

L. Rose
Mum & Co.

ATTORNEYS.

UNITED STATES PATENT OFFICE.

LOUIS ROSE, OF PARIS, MISSOURI.

IMPROVEMENT IN SHOES.

Specification forming part of Letters Patent No. **216,220**, dated June 3, 1879; application filed April 22, 1879.

To all whom it may concern:

Be it known that I, LOUIS ROSE, of Paris, in the county of Monroe and State of Missouri, have invented a new and Improved Shoe, of which the following is a specification.

The object of my invention is to furnish a cheap and substantial shoe adapted for the use of plowmen and others, and which can be easily put on and off.

My invention consists in a shoe having its upper made of but two pieces of material, opening at the back, and adjustable to fit any size of ankle by means of straps and buckles.

In the accompanying drawings, Figure 1 is a side view of my improved shoe. Fig. 2 is a rear view. Fig. 3 is a side view the reverse of Fig. 1. Figs. 4 and 5 represent the two pieces out of which the upper is formed.

Similar letters of reference indicate corresponding parts.

A is the shoe, the upper of which is made of a front piece, *a*, of leather, (shown separately in Fig. 5,) and a rear piece, *b*. (Shown separately in Fig. 4.) The material is preferably leather.

In attaching the pieces *a b* together, the points *o'*, *p'*, and *q'* of piece *b* are placed to correspond with the points *o p q*, respectively, of piece *a*, and the line from *o'* to *r'* on piece *b* is placed along the line *o r* of piece *a*, and the parts sewed together on these lines. The point *s'* of *b* is then brought to the point *s* of piece *a* to form the back seam, and sewed as far as *t* and *t'*, and left unsewed from *t* to the point *u*, thus forming the opening at the

back of the shoe, with a flap on piece *b* that laps on *a*, as shown in Figs. 1 and 2.

The upper is made to come well up around the ankles, and to the flap of the back seam straps *c c* are attached by rivets, which are used in connection with buckles *d d* on piece *a* to draw the upper closely around the ankle, to retain the shoe on the foot and prevent dirt, &c., from getting in. The buckles are attached a short distance forward to permit of drawing the upper in to the required extent.

By the above-described construction, the shoe has but few seams. It is adapted for fitting a large or small ankle, and can be readily put off and on.

The shoe is especially adapted for the use of plowmen, as there is no opening at the front to collect dirt. The short seam at the upper part is to be made without lapping, and finished smoothly to prevent dirt from collecting. The shoe requires less material for its manufacture than others. It can be made cheaply, is durable, and a perfect dirt-excluder.

Having thus described my invention, I claim as new and desire to secure by Letters Patent—

As an improved plow-shoe, the shoe A, constructed of the two pieces *a b*, united as described, with the opening at the back, and provided with the straps *c* and buckles *d*, as and for the purposes specified.

LOUIS ROSE.

Witnesses:

R. N. BODINE,

A. DE F. ARMSTRONG.