

H. S. MERTZ & H. T. WORMAN.
Fastenings for Mail-Bags.

No. 218,045.

Patented July 29, 1879.

Fig. 1.

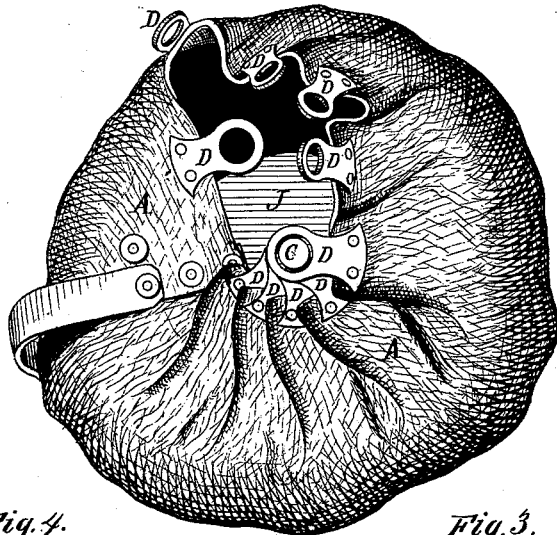


Fig. 2.

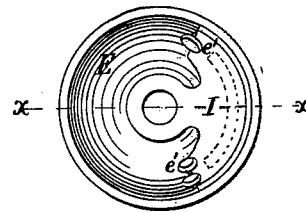


Fig. 4.



Fig. 3.

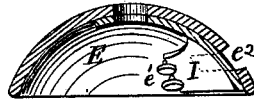


Fig. 5.

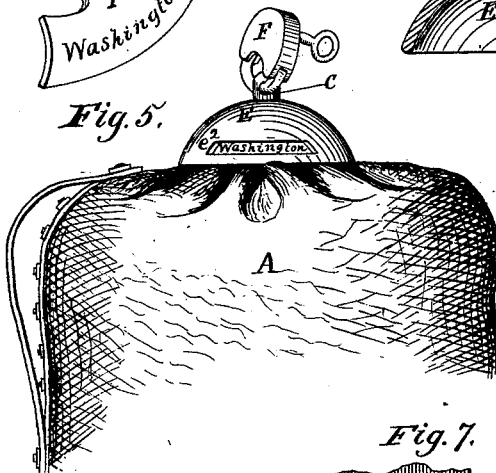


Fig. 6.

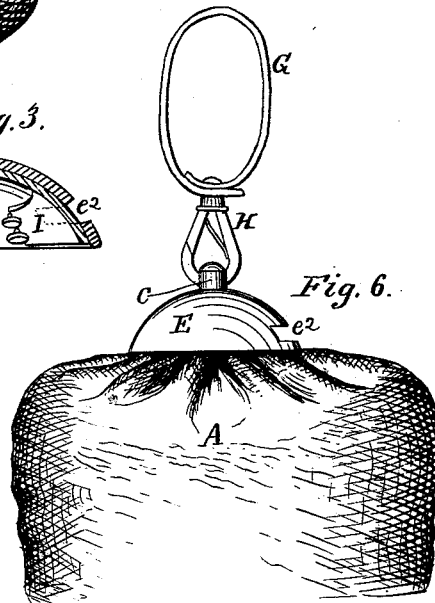
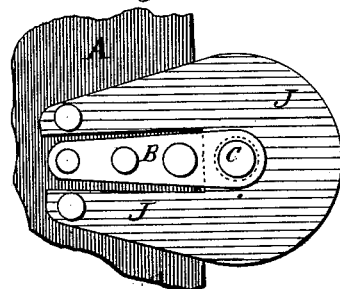


Fig. 7.



WITNESSES:

Henry N. Miller
C. Sedgwick

INVENTOR:

H. S. Mertz
H. T. Worman

BY

Mum & Co.

ATTORNEYS.

UNITED STATES PATENT OFFICE

HENRY S. MERTZ AND HENRY T. WORMAN, OF ALLENTOWN, PA.

IMPROVEMENT IN FASTENINGS FOR MAIL-BAGS.

Specification forming part of Letters Patent No. **218,045**, dated July 29, 1879; application filed October 26, 1878.

To all whom it may concern:

Be it known that we, HENRY STEWARD MERTZ and HENRY TILGHMAN WORMAN, of Allentown, in the county of Lehigh and State of Pennsylvania, have invented a new and useful Improvement in Fastenings for Mail-Bags, &c., of which the following is a specification.

Figure 1 is a top view of a mail-bag to which our improved fastening has been applied. Fig. 2 is a detail under-side view of the cap. Fig. 3 is a cross-section of the cap, taken through the line *x x*, Fig. 2. Fig. 4 is a detail perspective view of the direction plate or label. Fig. 5 is a side view of the upper part of a mail-bag to which our improved fastening has been applied, showing it locked. Fig. 6 is a side view of the upper part of a mail-bag to which our improved fastening has been applied, showing it provided with a hand or carrying strap. Fig. 7 is an under-side view of the stud and guard-plate.

Similar letters of reference indicate corresponding parts.

The object of this invention is to furnish an improved fastening, designed especially for mail-bags, but which may be applied with equal facility to hat-boxes, hand-bags, and other bags, and which shall be simple in construction and convenient in use, being easily fastened and unfastened, and not being liable to become accidentally unfastened, or to allow the contents of the bag to fall out.

The invention consists in the combination of the stud-plate, the stud, the eye-plates, and the cap with each other and the mouth of the bag; in the combination of the guard-plate with the stud-plate, the stud, the eye-plates, the cap, and the bag; in the combination of the hand-strap and the snap-hook with the stud, the eye-plates, the cap, and the bag; and in the combination of the direction plate or label with the slotted cap-plate, the stud, the eye-plates, and the bag, as hereinafter fully described.

A represents a mail-bag, to the inner surface of which, at one side of its mouth, is secured by rivets a short and narrow metal plate, B. The outer end of the plate B projects a little beyond the edge of the mouth of

the bag A, and to it is attached or upon it is formed a stud, C.

To the edge of the mouth of the bag A, at a little distance from each other, are secured a number of small plates, D, the outer ends of which project a little beyond the said edge, and have holes or eyes formed through them of sufficient size to allow them to be placed upon the stud C. The eye-plates D are placed upon the stud C in regular order, and are then covered and protected by a semi-spherical cap, E, which has a hole through its center to receive the stud C. The upper end of the stud C has a hole formed through it to receive the bar of a padlock, F, as shown in Fig. 5.

G is a short hand-strap, the ends of which are overlapped, and are riveted to the shank of a snap-hook, H. When the fastening is not required to be locked, the snap-hook H may be hooked into the hole in the end of the stud C, and when the fastening is required to be locked, the said snap-hook H may be hooked around the bar of the padlock F, forming, in either case, a convenient handle for carrying the bag.

I is a plate, which is so formed as to fit into the interior of the cap E at one side, and which is provided with a perforated lug upon its inner edge, the hole of which corresponds with the hole through the cap E, so that the stud C may pass through it at the same time that it passes through the hole in the said cap E. The plate I is kept from side movement within the cap E by pins *e'* attached to the said cap, and against which the side edges of the said plate I rest. Upon the outer or convex side of the plate or label I is marked the name of the post-office or other place to which the bag is to be sent, or the name or address of its owner, which direction is seen through a slot, *e''*, in the side of the cap E.

J is a leather or metal plate, which is slotted to receive the stud-plate B, and is riveted to the bag A upon the opposite sides of the said plate B. The guard-plate J is designed to cover the inner side of the mouth of the bag when fastened to prevent the contents of the said bag from working into the folds or gathers at its mouth.

Having thus described our invention, we

claim as new and desire to secure by Letters Patent—

1. The combination of the stud-plate B, the stud C, the eye-plates D, the cap E, and the mouth of the bag A, substantially as herein shown and described.

2. The combination of the guard-plate J with the stud-plate B, the stud C, the eye-plates D, the cap E, and the bag A, substantially as herein shown and described.

3. The combination of the snap-hook H, provided with the hand-strap G, with the stud

C, the eye-plates D, the cap E, and the bag A, substantially as herein shown and described.

4. The cap-plate E, provided with the direction-plate I, in combination with the post C and the bag A, all arranged substantially as shown and described.

HENRY STEWARD MERTZ.

HENRY TILGHMAN WORMAN.

Witnesses:

WALTER L. JONES,

H. R. SCHLENCH.