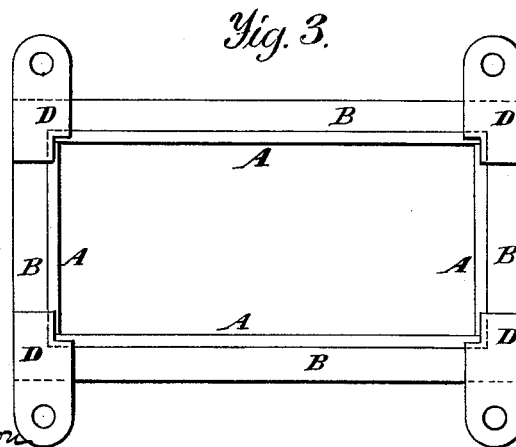
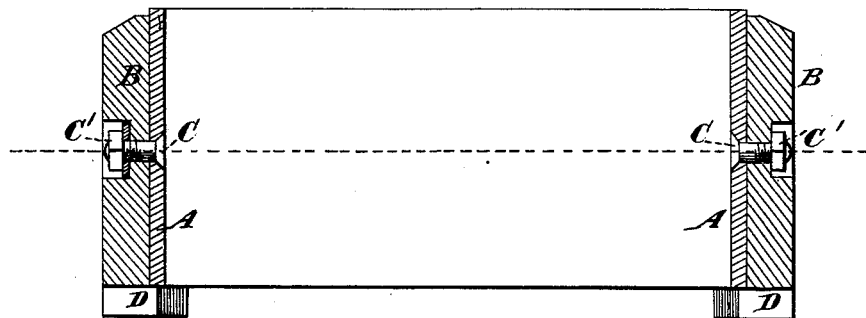
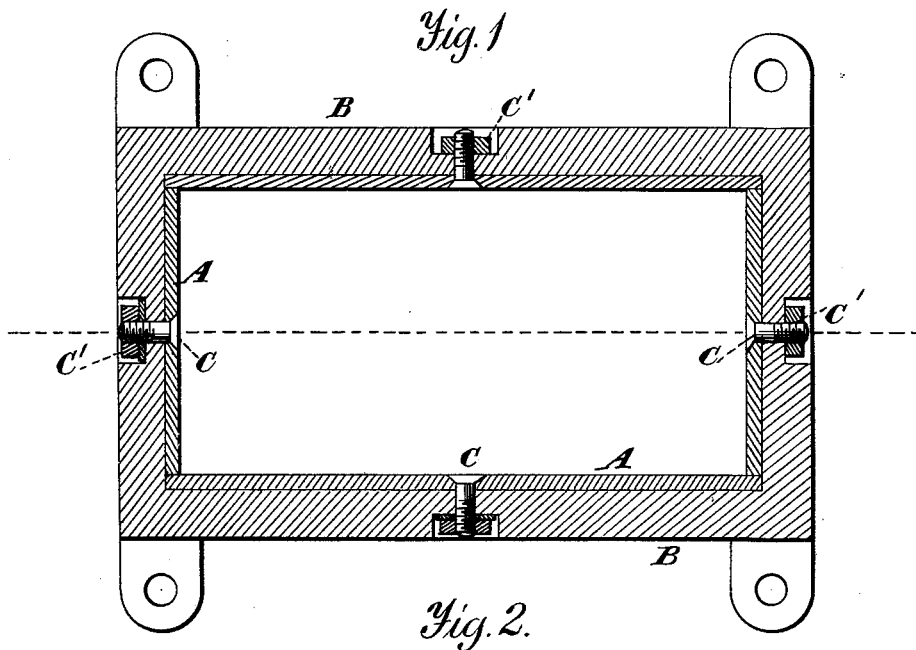


T. CLIFFORD, Sr., & J. CLIFFORD.
Brick-Mold and Brick-Press Box.

No. 218,711.

Patented Aug. 19, 1879.



Witnesses.

A. Ruppert,

J. G. Mason

*T. Clifford, Sr.
J. Clifford
Inventors.*

*D. P. Holloway & Co
Attys*

UNITED STATES PATENT OFFICE.

THOMAS CLIFFORD, SR., AND JAMES CLIFFORD, OF MOUNT SAVAGE, MD.

IMPROVEMENT IN BRICK-MOLDS AND BRICK-PRESS BOXES.

Specification forming part of Letters Patent No. **218,711**, dated August 19, 1879; application filed May 9, 1879.

To all whom it may concern:

Be it known that we, THOMAS CLIFFORD, Sr., and JAMES CLIFFORD, of Mount Savage, in the county of Alleghany and State of Maryland, have invented certain new and useful Improvements in Linings for Brick-Molds and Brick-Press Boxes; and we do hereby declare that the following is a full, clear, and exact description of the invention, which will enable others skilled in the art to which it appertains to make and use the same, reference being had to the accompanying drawings, and to letters of reference marked thereon, which form a part of this specification.

Our invention consists in lining the press-boxes or molds with metal plates so fastened to the mold that when they become worn on one side they may be transposed, thus making one set of plates last twice as long as when fastened by means of rivets, which makes turning impossible.

In the annexed drawings, making a part of this specification, Figure 1 is a horizontal section of the mold or press-box. Fig. 2 is a longitudinal vertical section of the same. Fig. 3 is a bottom view of the same.

In all the figures the same letters are employed in the indication of identical parts.

A A are the plates, placed on the inside of the mold or box B, and secured to its inner sides by the flat-headed screw-bolts C and nuts C'. The bolts C C pass through the center of the plates, so that when required they may

be turned, the holes in plates to receive the bolts always coming directly opposite the holes in the sides of the box.

On the bottom of the mold-box are fastened lugs D, which extend over the inner edges of the box near the four corners, and support the lining-plates when the mold or box is in use. These lugs are also used to fasten the press-box to the machine.

We are aware that it is customary to line the molds or press-boxes with sheets of metal; but these linings are usually fastened to the box by means of rivets, which prevent their being turned, so that when they become worn they are thrown away, and are of no further use.

What we claim as our invention, and desire to secure by Letters Patent, is—

In combination with the sides of a press-box or mold, the plates A A, resting on lugs D, and secured to the sides by flat-headed screw-bolts, so that plates, when they become worn, may be turned and used again, substantially as set forth.

In testimony that we claim the foregoing as our own we affix our signatures in presence of two witnesses.

THOMAS CLIFFORD, SR.
JAMES CLIFFORD.

Witnesses:

JOHN LAVELLE,
THOMAS CLIFFORD, Jr.