

L. L. SMITH, F. L. KNABLE & H. F. SMITH.
Stiff-Hat Flange.

No. 218,787.

Patented Aug. 19, 1879.

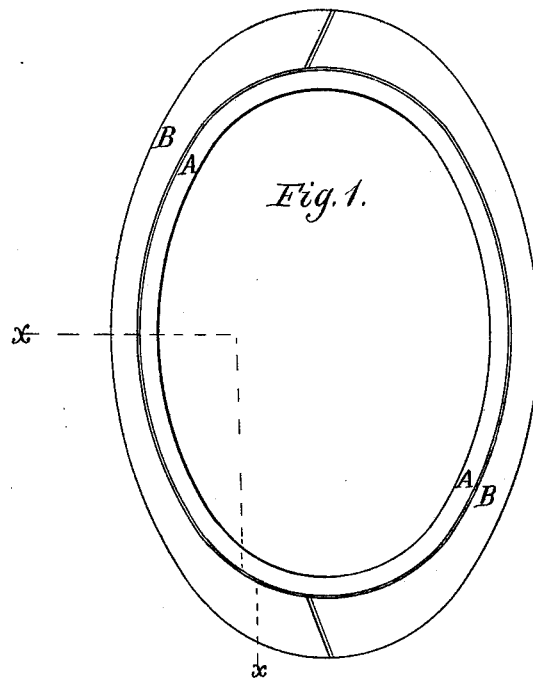


Fig. 2.

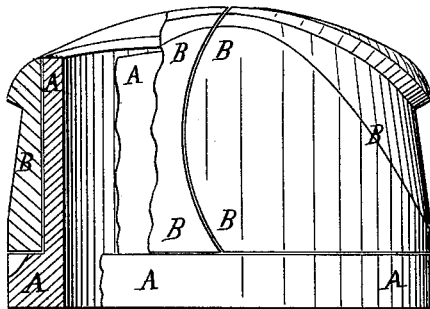


Fig. 3.

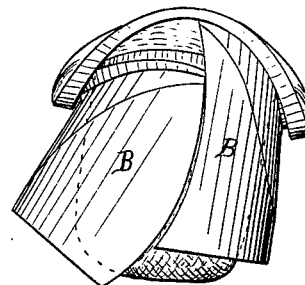
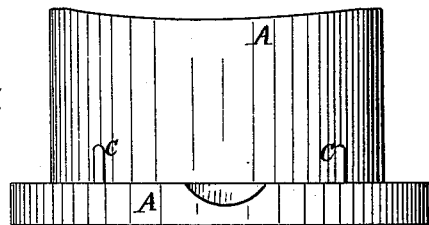


Fig. 4.



WITNESSES:

Henry V. Miller
C. Sedgwick

INVENTOR:

L. L. Smith
F. L. Knable
H. F. Smith

BY

Wm. A. Co.

ATTORNEYS.

UNITED STATES PATENT OFFICE

LEWIS L. SMITH, FREDERICK L. KNABLE, AND HENRY F. SMITH, OF ORANGE,
NEW JERSEY.

IMPROVEMENT IN STIFF-HAT FLANGES.

Specification forming part of Letters Patent No. **218,787**, dated August 19, 1879; application filed
January 27, 1879.

To all whom it may concern:

Be it known that we, LEWIS LEANDER SMITH, FREDERICK LEONARD KNABLE, and HENRY FRANCIS SMITH, of Orange, in the county of Essex and State of New Jersey, have invented a new and useful Improvement in Stiff-Hat Flanges, of which the following is a specification.

Figure 1 is a top view of one of our improved flanges. Fig. 2 is an end view of the same, part being broken away to show the construction. Fig. 3 is an end view of the same, illustrating the mode of separating the flange from the hat. Fig. 4 is a detail side view of the stand.

Similar letters of reference indicate corresponding parts.

The object of this invention is to furnish an improved flange for use in shaping the brims of stiff hats, and which shall be so formed that it may be removed from the hat without changing the shape of the brim.

The invention consists in a flange for shaping the brims of stiff hats, made in two parts, with the lines of division at the front and rear sides, and with the end edges of the one part convex and the end edges of the other part concave, to adapt the flange to be withdrawn from the hat without changing the shape of the hat-brim, as hereinafter fully described.

A represents the stand upon which the flange is placed when in use, and which has a shoulder around its bottom for the lower edge of the flange B to rest upon. The stand A is made of such a height that its upper edge may correspond with the upper edge of the flange B, and its cavity is made large enough to receive and fit upon the body of the hat.

The upper edge or top of the flange B is made

of the exact shape required to be given to the hat-brim. The flange B is made in two parts, meeting each other at the front and rear sides of the flange, and the end edges of the one part are convex and the end edges of the other part concave, as shown in the drawings.

With this construction, when the hat-brim has been properly shaped, and the hat is to be removed from the flange, the flange B is raised from the stand A, and the lower edge of one of its parts is turned outward, as shown in Fig. 3, which movement withdraws the said part from the hat without changing the shape of its brim. The other part is then withdrawn from the hat by a similar movement. The parts of the flange B are kept in place upon the shoulder of the stand A by dowel-pins C attached to the said shoulder, and which enter holes in the lower edges of the parts of the said flange.

Having thus described our invention, we claim as new and desire to secure by Letters Patent—

A flange for shaping the brims of stiff hats, made in two parts, with the lines of division at the front and rear sides, and with the end edges of the one part convex and the end edges of the other part concave, to adapt the flange to be withdrawn from the hat without changing the shape of the hat-brim, substantially as herein shown and described.

LEWIS LEANDER SMITH.
FREDERICK LEONARD KNABLE.
HENRY FRANCIS SMITH.

Witnesses:

HENRY ALFRED BROWN,

JAMES ^{his} X DONOHUE.
mark.