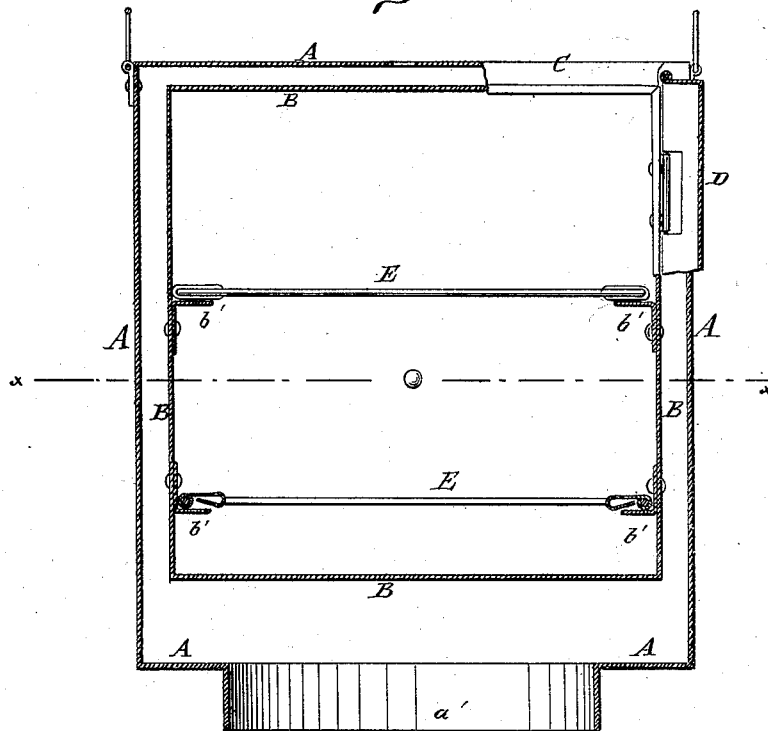


C. W. DALY.  
Lamp-Stove Ovens.

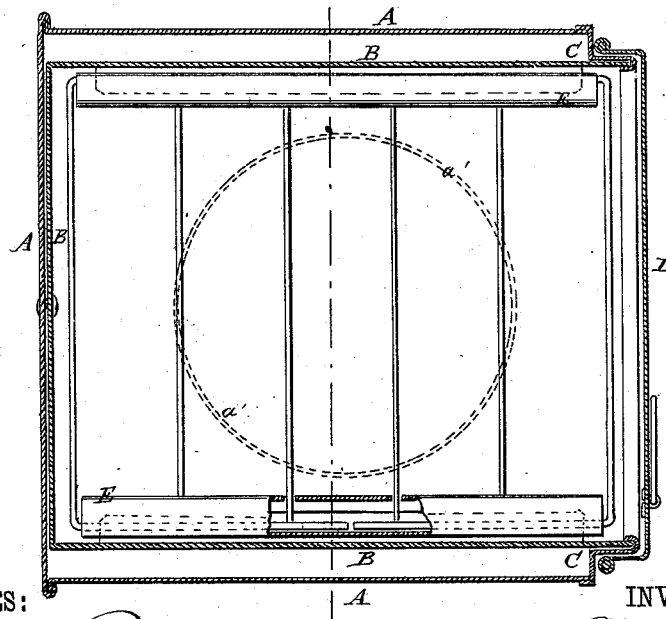
No. 218,940.

Patented Aug. 26, 1879.

*Fig: 1.*



*Fig: 2.*



WITNESSES:

*Chas. Nida.*  
*C. Sedgwick*

INVENTOR:

*C. W. Daly*  
BY *Munn & Co*  
ATTORNEYS.

# UNITED STATES PATENT OFFICE.

CHARLES W. DALY, OF BROOKLYN, NEW YORK.

## IMPROVEMENT IN LAMP-STOVE OVENS.

Specification forming part of Letters Patent No. **218,940**, dated August 26, 1879; application filed June 18, 1879.

*To all whom it may concern:*

Be it known that I, CHARLES W. DALY, of Brooklyn, in the county of Kings and State of New York, have invented a new and useful Improvement in Lamp-Stove Ovens, of which the following is a specification.

Figure 1 is a vertical cross-section, partly in front view, of an oven to which my improvement has been applied. Fig. 2 is a horizontal section of the same, taken through the line *x x*, Fig. 1.

Similar letters of reference indicate corresponding parts.

The object of this invention is to improve the construction of cooking-ovens for lamp and gas stoves and other stoves, steam-heaters for cooked food, and other similar apparatus in such a way that they may be simpler and less expensive in construction than when made in the usual way, and which, at the same time, shall be strong and durable.

The invention consists in a double-walled oven or heater, in which the forward end of the inner case projects beyond the forward end of the outer case, and the front plate, that closes the forward end of the space between the two cases, has its inner part bent outward along the sides of the projecting end of the inner case, and is bent down over the edge of the said end, as hereinafter fully described.

A is the outer case of the oven or heater, which has a hole formed through its bottom surrounded with a collar, *a'*, to adapt it to be placed upon a lamp or gas stove, or a length of stove-pipe. B is the inner case, which is made narrower and lower than the outer case, A, as shown in Figs. 1 and 2, so as to leave a space between the said cases at the top, bottom, and sides for the passage of hot air, smoke, or steam.

The inner case, B, is placed within the outer case, A, and its inner or rear end is secured to the inner or rear end of the said outer case, A, by rivets. The inner case, B, is made longer than the outer case, A, so that the forward end of the said inner case, B, may project, as shown in Fig. 2.

The space between the forward end of the outer case, A, and the inner case, B, is closed by a plate, C, the outer edge of which is seamed to the forward edge of the said outer case, A. The inner parts of the front plate C are bent forward at right angles to lie against the outer

sides of the projecting forward part of the inner case, B, and their edges are bent down inward over the edge of the said projecting forward end of the said inner case, B.

By this construction the forward ends of the two cases A B are firmly and securely connected together, and at the same time a projecting flange is formed to receive the door D. The door D has its edges bent inward or flanged to fit upon the flange of the oven A B, and is hinged at one edge to the front of the said oven.

By this construction the door D will shut closely, so as to prevent any steam or odor from escaping from the food being cooked or heated.

When the oven is to be used with an oil or gas stove, a number of holes should be formed in the top of the outer case, A, to allow the heated air and the products of combustion to escape.

When the device is to be used upon a stove-pipe, the top of the upper case, A, should be provided with a collar in the same way as its bottom, so that the said device may be interposed between the adjacent ends of two lengths of stove-pipe.

When the device is to be used for heating food by steam the outer case, A, should be provided with pipes to admit and carry off the steam.

To the inner surface of the sides of the inner case, B, are secured cleats *b'*, to receive the racks E, upon which the pans or other vessels containing the food which is to be cooked or warmed are placed.

Having thus described my invention, I claim as new and desire to secure by Letters Patent—

A double-walled oven or heater in which the forward end of the inner case, B, projects beyond the forward end of the outer case, A, and the front plate C, that closes the forward end of the space between the two cases, has its inner part bent outward along the sides of the projecting end of the inner case, B, and is bent down over the edge of the said end, substantially as herein shown and described.

CHARLES W. DALY.

Witnesses:

JAMES T. GRAHAM,  
C. SEDGWICK.