

B. SNIFFIN.
Rowlock.

No. 219,775.

Patented Sept. 16, 1879.

Fig. 1

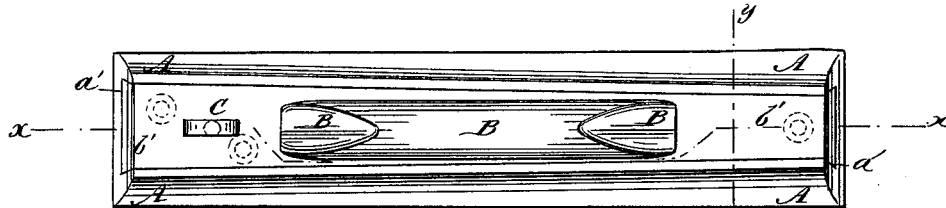


Fig. 2

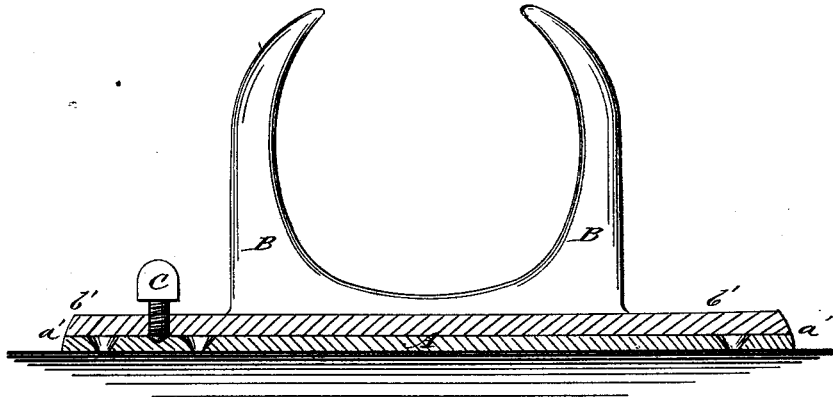
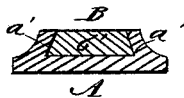


Fig. 3



WITNESSES:

C. Noveux
G. Sedgwick

INVENTOR:

B. Sniffin
BY *Mum Ho*
ATTORNEYS.

UNITED STATES PATENT OFFICE.

BENJAMIN SNIFFIN, OF SING SING, NEW YORK.

IMPROVEMENT IN ROWLOCKS.

Specification forming part of Letters Patent No. **219,775**, dated September 16, 1879; application filed July 31, 1879.

To all whom it may concern:

Be it known that I, BENJAMIN SNIFFIN, of Sing Sing, in the county of Westchester and State of New York, have invented a new and Improved Rowlock, of which the following is a specification.

Figure 1 is a top view of one of my improved rowlocks. Fig. 2 is a longitudinal section of the same, taken through line *x x*, Fig. 1. Fig. 3 is a cross-section of the same, taken through line *y y*, Fig. 1.

The object of this invention is to furnish rowlocks which shall be so constructed as to support the oars firmly when in use, and at the same time may be readily detached from the gunwale of the boat when not in use.

The invention consists in the rowlock provided with a tapered dovetailed base-plate and a set-screw, in combination with a bed-plate provided with a tapered dovetailed groove, as hereinafter fully described.

A represents the bed-plate of a rowlock, which is designed to be securely fastened to the gunwale of the boat.

In the upper side of the bed-plate A is formed a longitudinal tapered dovetailed groove, *a'*, to receive the dovetailed base-plate *b'* of the lock B.

The base-plate *b'* is tapered to correspond with the taper of the groove *a'* in the bed-plate A.

The bed-plate A is attached to the gunwale with the narrower end of its groove toward

the bow of the boat, so that the pressure of the oar in rowing will tend to draw the base-plate *b'* farther into the said groove *a'*, and thus make the rowlock more firm and secure.

The base-plate *b'* is held against being pushed out of its groove by the pressure of the oar, when backing water, by a set-screw, C, which passes through a screw-hole in the rear or wider part of the base-plate *b'*, so that its forward end may rest against the bed-plate A, as shown in Fig. 2.

I am aware that it is not new to provide a rowlock with a dovetailed base-fitting recess of bed-plate; but this brings the whole leverage across the tenon and will soon result in a fracture under a vigorous pull, while mine brings the leverage close to the gunwale, so that the harder the pull the greater is the resistance.

What I claim as new and of my invention is—

The rowlock B, provided with a tapered dovetailed base-plate, *b'*, and a set-screw, C, in combination with a bed-plate, A, provided with a tapered dovetailed groove, *a'*, substantially as herein shown and described.

BENJAMIN ^{his} X SNIFFIN.
mark.

Witnesses:

A. HYATT,
C. C. YEOMANS.