

G. F. WHITE.
Wooden Printing-Type.

No. 219,887.

Patented Sept. 23, 1879.

Fig. 1.

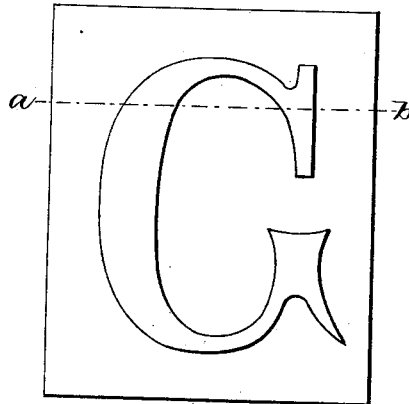


Fig. 2.

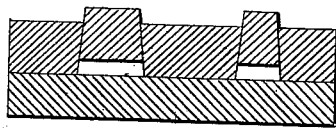
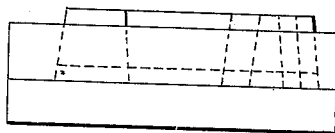


Fig. 3.



Witnesses

Mary J White
Emma Walter

Inventor:

George F. White

By J. J. White

Atty.

UNITED STATES PATENT OFFICE.

GEORGE F. WHITE, OF FRANKFORD, PHILADELPHIA, PENNSYLVANIA.

IMPROVEMENT IN WOODEN PRINTING-TYPES.

Specification forming part of Letters Patent No. **219,887**, dated September 23, 1879; application filed December 7, 1878.

To all whom it may concern:

Be it known that I, GEORGE F. WHITE, of Frankford, Philadelphia, State of Pennsylvania, have invented a new and useful Improvement in Making Wooden Printing-Types, of which the following is a specification.

Heretofore such types have been made by chiseling away the superfluous wood. This method is objectionable because of the expense attending it.

The object of my invention is to provide a cheap and efficient method of making printing-types.

The invention consists in sawing through a board at an angle with the surface in such a manner that the figure may be projected for printing.

In the accompanying drawings, Figure 1 is a plan view of the raised type. Fig. 2 is a section of the same through *a b*, Fig. 1; and Fig. 3 is an elevation of Fig. 1.

The method of construction consists in sawing through a board on a bevel in such manner as to produce type for printing, and projecting the type so produced.

The process by which these types are manufactured is covered by my Patent No. 210,229.

Having thus described my invention, what I claim is—

Wooden types the figure of which, corresponding in outline with the printing-surface, is shaped with its sides at an obtuse angle with its printing-face, and is partly projected above and held in a board or block provided with a correspondingly-beveled opening of the shape of the said figure, substantially as described.

GEORGE F. WHITE.

Witnesses:

MARY I. WHITE,
EMMA WALTER.