

E. R. PARKS.

Privy-Seat.

No. 219,976.

Patented Sept. 23, 1879.

FIG. 1.

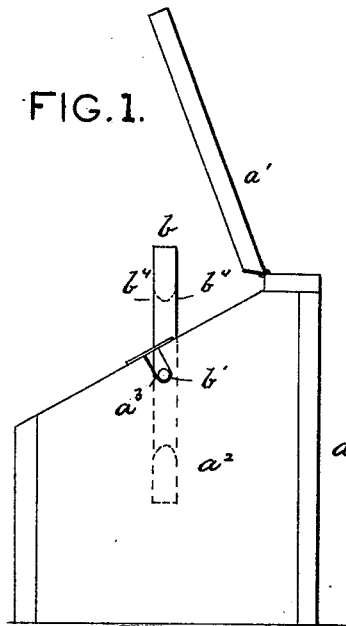
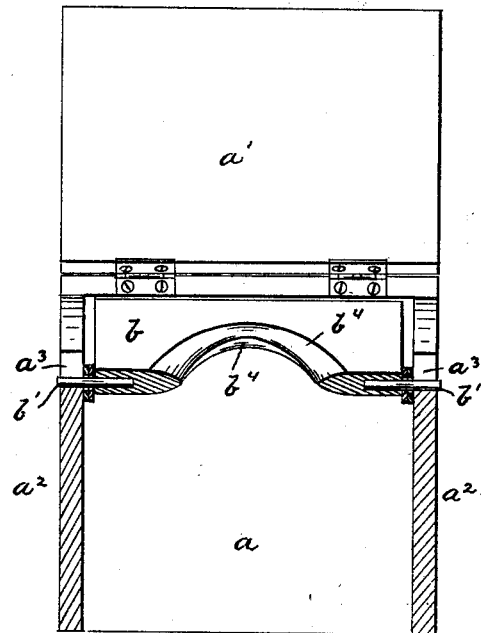
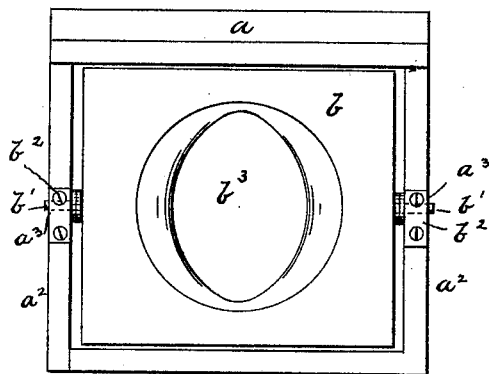


FIG. 3.

FIG. 2.



Witnesses:

Samuel R. Turner

C. M. Sites

Inventor:

Edwin R. Parks

By R. S. & A. Lacey
Attys

UNITED STATES PATENT OFFICE.

EDWIN R. PARKS, OF DELAWARE MINE, MICHIGAN.

IMPROVEMENT IN PRIVY-SEATS.

Specification forming part of Letters Patent No. **219,976**, dated September 23, 1879; application filed August 6, 1879.

To all whom it may concern:

Be it known that I, EDWIN R. PARKS, of Delaware Mine, in the county of Keweenaw and State of Michigan, have invented certain new and useful Improvements in Seats for Commodes and Privies; and I do hereby declare that the following is a full, clear, and exact description of the invention, which will enable others skilled in the art to which it appertains to make and use the same, reference being had to the accompanying drawings, and to letters of reference marked thereon, which form a part of this specification.

This invention has for its object to furnish a commode or privy seat which will be so constructed and arranged as to prevent persons from standing thereon.

It consists in having the seat balanced on pins which have their bearings in the frame or commode-box, as will be hereinafter fully explained.

In the drawings, Figure 1 is a side elevation of a commode or privy-box with my improvement attached thereto. Fig. 2 is a plan, and Fig. 3 is a vertical cross-section, of the same.

a is the frame of a privy-box or commode. Its top end is open, and is inclined upward and backward from the front side, as shown, and is provided with a lid, *a'*, which is hinged to the rear side and shuts down on the open upper end thereof. In the end boards, *a''*, there are formed suitable recesses *a'''*, which serve as bearings for the pins or journals of the seat. The recesses *a'''* are equidistant from the front and rear boards of the box *a*.

b is the seat, which is made to fit neatly in the open top of the box *a*. It is balanced on the pins or journals *b'*, affixed in its ends, and so arranged that it may be turned entirely

over within the open end of the casing *a*. The projecting ends of the pins or journals *b'* are held in the bearings *a'''* in the casing *a*. The bearings or recesses *a'''* are covered by plates *b'' b''*, which may be taken off if it be desired to remove the seat *b* for any purpose.

The seat *b* is provided with the opening *b''*, of ordinary form. The edge of the seat surrounding the opening *b''* is beveled on both sides, as shown at *b''*, Figs. 1 and 3, the object of which is, that either side may be used.

It will be clearly seen that no one could stand on the pivoted revolving seat *b*. It will be further readily seen that it will be firm in its position when sat upon by the person using the same.

I am aware that it is old to construct a privy-seat and suspend it on pivots or pins so that it may be partially rotated; but I am not aware that it is old to balance a privy-seat at its center, so that it may be turned over and either side be used, at the pleasure of the user.

Having described my invention, what I claim, and desire to secure by Letters Patent, is—

In a privy-seat, the board *b*, having its upper and under sides made alike in form, and balanced on pins supported in bearings in the end boards or framing of the privy, so that it may be reversed or turned over, substantially as and for the purposes set forth.

In testimony that I claim the foregoing as my own I affix my signature in presence of two witnesses.

EDWIN R. PARKS.

Witnesses:

JOHN FRANK,
ADAM WEIS.