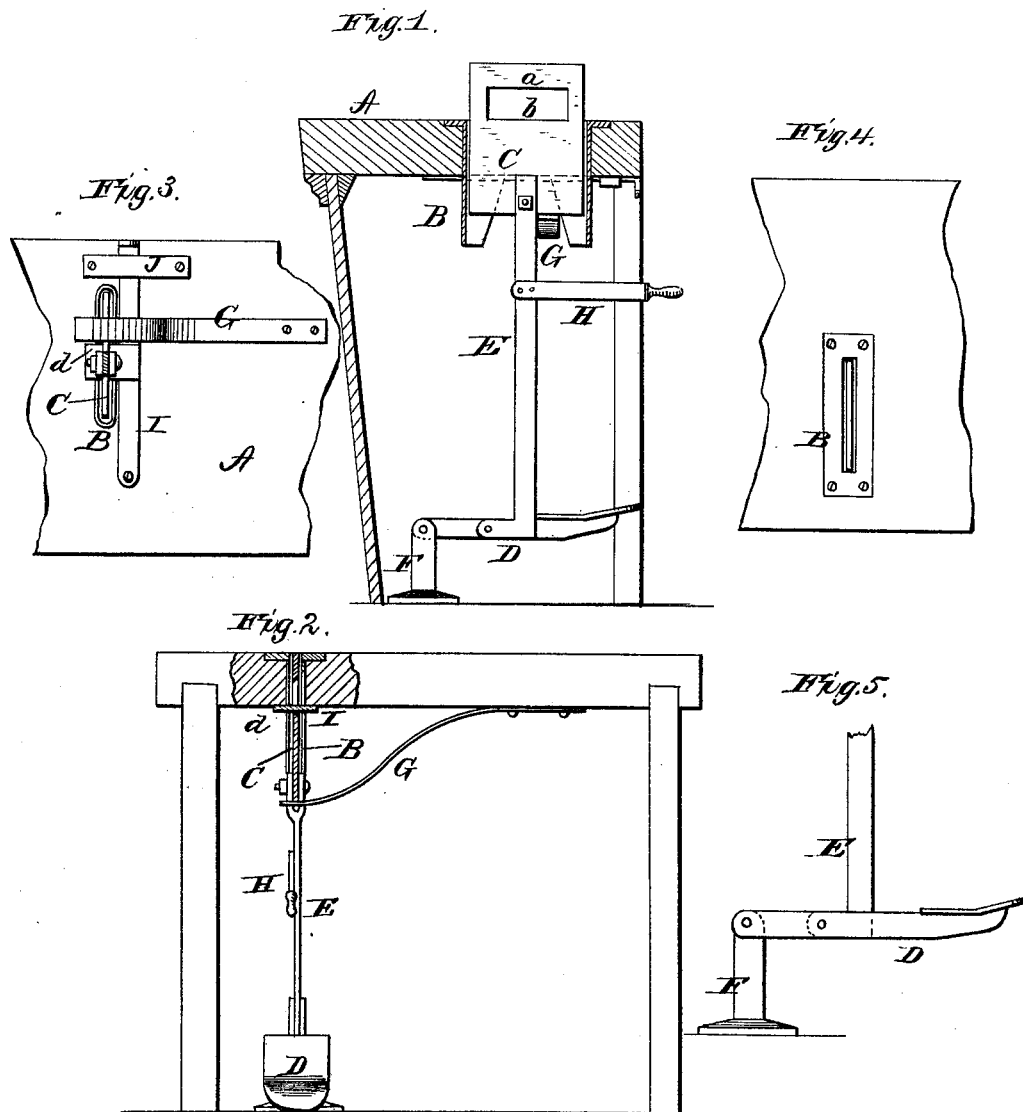


T. C. MARIS.  
Plug-Tobacco Cutter.

No. 220,400.

Patented Oct. 7, 1879.



WITNESSES

*A. L. Curran*  
*H. Aubrey Toulmin*

INVENTOR

*T. C. Maris*  
*Alexander Watson*  
ATTORNEYS

# UNITED STATES PATENT OFFICE.

THOMAS C. MARIS, OF MARIETTA, OHIO, ASSIGNOR OF ONE-HALF OF HIS  
RIGHT TO J. D. OTTERBEIN, OF SAME PLACE.

## IMPROVEMENT IN PLUG-TOBACCO CUTTERS.

Specification forming part of Letters Patent No. **220,400**, dated October 7, 1879; application filed  
August 8, 1879.

*To all whom it may concern:*

Be it known that I, THOMAS C. MARIS, of Marietta, in the county of Washington, and in the State of Ohio, have invented certain new and useful Improvements in Plug-Tobacco Cutters; and do hereby declare that the following is a full, clear, and exact description thereof, reference being had to the accompanying drawings, and to the letters of reference marked thereon, making a part of this specification.

The nature of my invention consists in the construction and arrangement of a cutter for cutting plug-tobacco in retail stores, as will be hereinafter more fully set forth.

In the annexed drawings, Figure 1 is a cross-section of a counter, showing a side view of my tobacco-cutter. Fig. 2 is a front view of the same. Figs. 3, 4, and 5 are detailed views of parts thereof.

A represents the counter or a table to be used in a retail store. In a mortise in this counter or table is inserted a metallic guide, B, in which the knife or cutter C moves vertically. This knife is made in the form of a plate, as shown in Fig. 1, with an opening, *b*, of suitable size, through it, the cutting-edge *a* being at the top of said opening.

The knife C is, by a bar or rod, E, connected with a treadle, D, which is pivoted to a post, F, fastened on the floor.

G is a spring fastened to the under side of the counter, and working against the bottom edge of the knife, so as to hold the same in an elevated position. The parts are so arranged that in this position the lower edge of the opening in the knife will be level with the top

surface of the counter, so that the plug of tobacco can be easily pushed through said opening, and by pressing down the treadle D the plug or piece is cut off.

A lever or handle, H, is attached to the bar or rod E, so as to operate the knife by hand, if desired.

To the under side of the table or counter A is pivoted a lever, I, which has on one side a projection, *d*, as seen in Fig. 3. When the knife C is lowered this lever I may be turned so as to bring the projection *d* into the opening *b* and hold the knife down, leaving nothing above the counter. By turning the lever I out of the way the spring G will throw the knife up again.

J is a guide for the lever.

Having thus fully described my invention, what I claim as new, and desire to secure by Letters Patent, is—

1. The reciprocating cutter *a b C*, applied beneath a counter and working in a guide-slot therein, whereby all the means are below the counter when the cutter is at the bottom of its stroke, substantially as and for the purposes herein set forth.

2. The lever or latch I, having projection *d*, in combination with the knife C, for the purposes set forth.

In testimony that I claim the foregoing I have hereunto set my hand this 11th day of July, 1879.

T. C. MARIS.

Witnesses:

J. J. MCCARTHY,  
H. J. ENNIS.