

(No Model.)

H. ROSE.
FRAME FOR TABLES.

No. 261,103.

Patented July 11, 1882.

Fig. 1.

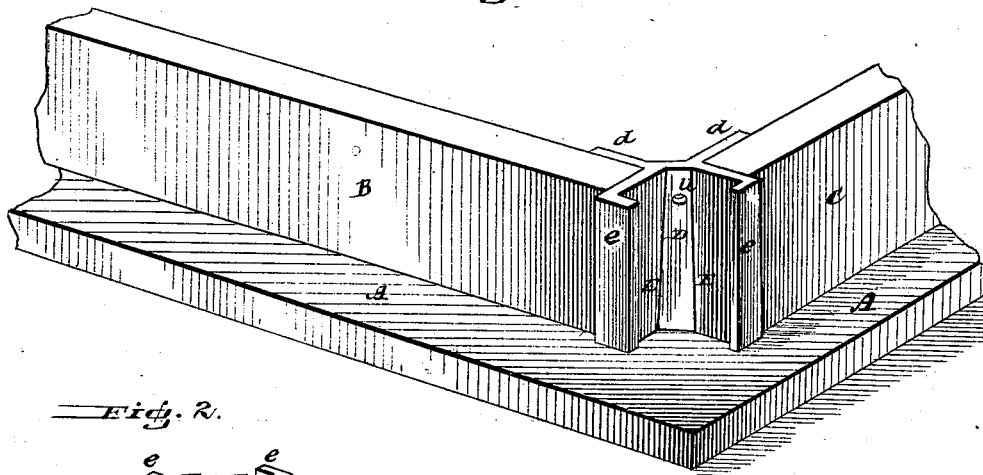


Fig. 2.

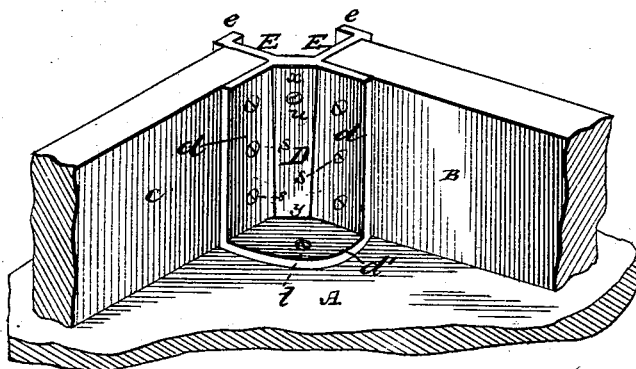


Fig. 4.

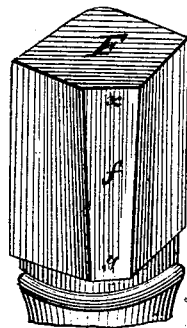


Fig. 3.

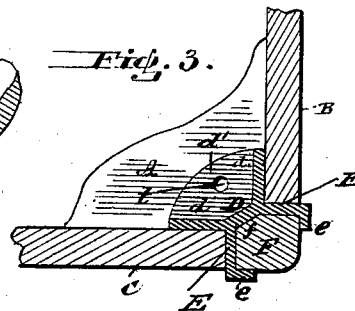
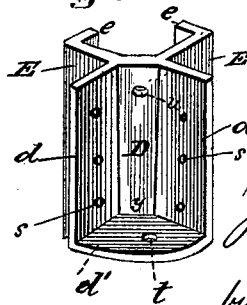


Fig. 5.



WITNESSES:

Wm. L. Dieterich
A. M. Long

Henry Rose
INVENTOR,
by Louis Ragner & Co
ATTORNEYS.

UNITED STATES PATENT OFFICE.

HENRY ROSE, OF PRAIRIE DU SAC, WISCONSIN, ASSIGNOR OF ONE-HALF
TO ALBION P. CUMMINGS, OF SAME PLACE.

FRAME FOR TABLES.

SPECIFICATION forming part of Letters Patent No. 261,103, dated July 11, 1882.

Application filed April 15, 1882. (No model.)

To all whom it may concern:

Be it known that I, HENRY ROSE, of Prairie du Sac, in the county of Sauk and State of Wisconsin, have invented certain new and useful Improvements in Frames for Tables; and I do hereby declare that the following is a full, clear, and exact description of the invention, which will enable others skilled in the art to which it appertains to make and use the same, reference being had to the accompanying drawings, which form a part of this specification, and in which—

Figure 1 is an inverted perspective view of one of the corners of a table constructed with my improved frame. Fig. 2 is a similar view of the inner side of the corner. Fig. 3 is a horizontal section through the frame, corner, and leg. Fig. 4 is a perspective view of the upper part of the leg, and Fig. 5 is a similar view of the metallic corner detached.

Similar letters of reference indicate corresponding parts in all the figures.

My invention relates to metallic corners for tables and like articles of furniture for connecting the side and end pieces of the frame, and at the same time forming sockets adapted to receive the legs; and it consists in the improved construction of the metallic corner, as hereinafter more fully described and claimed.

In the accompanying drawings, A represents the table-leaf; B, one of the side pieces, and C one of the end pieces, of the frame. The corner for connecting the side and end pieces is preferably made of cast-iron, and consists of a web, D, having wings or flanges *d d*, which are connected by a web or plate, *d'*. The sides and ends B and C of the frame are connected to the flanges *d d* by screws *s*, while the connecting-web *d'* is fastened to the under side of the leaf of the table by a screw, *t*.

At right angles to the inner flanges, *d d*, are plates E E, which are flanged at their outer edges, as shown at *e e*. The inner edges of these plates, impinging upon the web or body-plate D, are made inclined or slanting, so as to make the inner face of said web of a wedge shape, or slightly tapering from top to bottom, as shown.

F represents the upper part of the leg, the inner corner of which is cut off, as shown at *f*, the cut or bevel being made slanting toward the top, so that its upper part, *x*, shall be wider

than the lower part, *y*. In this manner the bevel *f* is made to fit the tapering face of web D, so that when it is screwed up against the latter by its fastening-screw *u* it will bind against the corner, or become wedged therein, as it were; but by loosening or withdrawing the screw the leg can readily be tilted back a little, so as to be withdrawn from its socket when the screw is removed.

It will be seen that this corner may be used with side and end pieces of any width, so long as they are not in excess of the width of the corner-plates E E, as they are simply fastened to the corner by being screwed up against the inner flanges, *d d*. This corner also gives a neat and finished appearance to the frame, and avoids the heaviness and clumsy appearance of cast sockets or closed sockets, inasmuch as the leg is clamped simply by the flanges *e e*. Hence the corner of the leg may be suitably ornamented by carving or otherwise, as it is not hidden by the socket or corner into which it is inserted. At the same time the table can be readily knocked down for shipping by simply withdrawing the screws *u* and removing the legs from their respective corners.

Having thus described my invention, I claim and desire to secure by Letters Patent of the United States—

1. The metallic corner herein shown and described, composed of the web D, made tapering on its inside, inner flanges, *d d*, connected by the web or plate *d'*, and end plates, E E, projecting at right angles to each other from the edges of the web or body-plate D, and having inward-projecting flanges *e e*, substantially as and for the purpose set forth.

2. The combination of the metallic corner composed of the parts D *d d d'* E *e*, constructed as described, end pieces, C, side pieces, B, table-leaf A, and detachable leg F, the inner corner of which is cut off to form a tapering bevel, *f*, substantially as and for the purpose herein shown and specified.

In testimony that I claim the foregoing as my own I have hereunto affixed my signature in presence of two witnesses.

HENRY ROSE.

Witnesses:

ERNEST LOTZ,
E. W. YOUNG.