

(Model.)

D. L. JAQUES.

DOOR HANGER.

No. 261,553.

Fig. Patented July 25, 1882.

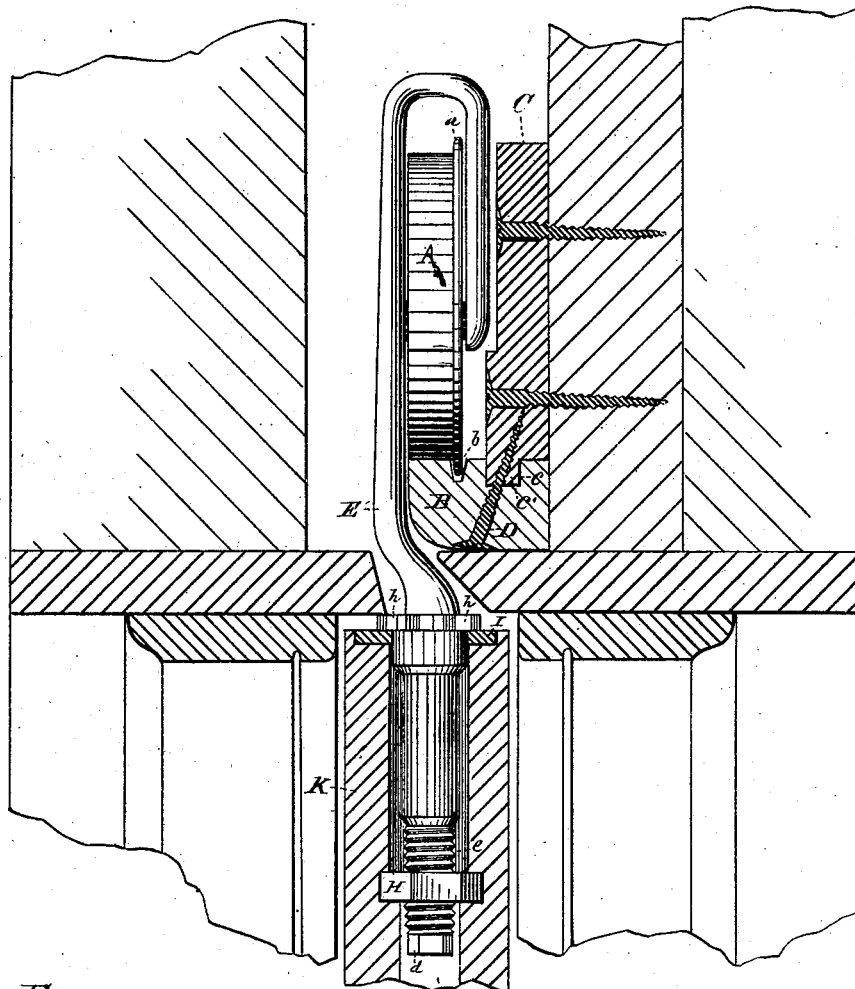
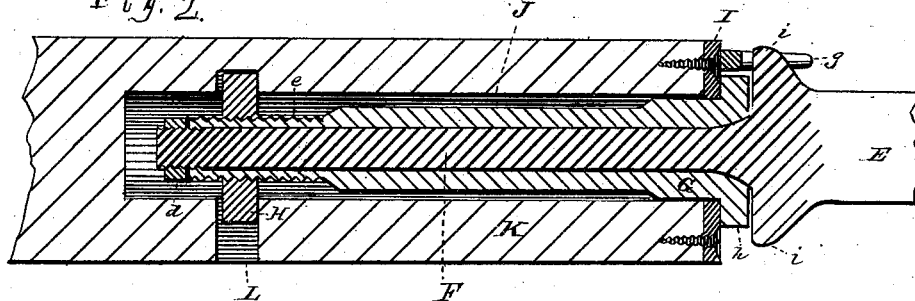


Fig. 2.



WITNESSES

W. Engel
Jos. Crowell Jr.

INVENTOR

David L. Jaques
By Leggett & Leggett
ATTORNEYS

UNITED STATES PATENT OFFICE.

DAVID L. JAKUES, OF CLEVELAND, OHIO.

DOOR-HANGER.

SPECIFICATION forming part of Letters Patent No. 261,553, dated July 25, 1882.

Application filed December 22, 1881. (Model.)

To all whom it may concern:

Be it known that I, DAVID L. JAKUES, of Cleveland, in the county of Cuyahoga and State of Ohio, have invented certain new and useful Improvements in Door-Hanging Devices; and I do hereby declare the following to be a full, clear, and exact description of the invention, such as will enable others skilled in the art to which it pertains to make and use the same.

My invention relates to door hangers and tracks; and it consists in the peculiar construction of the same, as will be hereinafter fully set forth and claimed.

In the drawings, Figure 1 is a section taken through a door frame and track, showing the construction of my door-hanger and the manner of its attachment to a door. Fig. 2 is a section taken through the shank or lower end of my hanger, and also through the end of a door, showing more clearly the manner of attaching the hanger to a door.

A is a roller, which is provided with a flange, *a*, which, by running in a groove, *b*, in the track B, prevents the said roller A from running off the track B while in motion.

The track B, which is preferably made of hard wood, is secured to another piece of wood, C, (preferably pine or other soft wood,) in substantially the manner shown in Fig. 1—viz., by means of a mortise, *c*, and tenon *c'*, and a suitable number of screws D, said screws extending through the track B from its under side into the piece C, said piece C being in turn secured to a joist above the door-frame. The object in constructing my track as hereinbefore described is to allow of its being adjusted or leveled if from any cause it should sag or bow. This adjusting is done by loosening or tightening the screws D, which lowers or raises the track B.

E is the hanger-rod of the roller A. This hanger-rod is provided with a shank, F, (see Fig. 2,) which passes through a sleeve, G, and is secured in place by means of a nut or washer, *d*, fastened or riveted on its lower end. The lower end of the sleeve G is provided with a screw-thread, *e*, which engages with the thread in the nut H. The upper end of the sleeve

G is provided with lugs *h*, whereby the sleeve G can be revolved by means of a hammer and nail-set or any other suitable tool.

To the top of the door is secured a metal plate, I, which is provided with a bifurcated lug, *g*, into which slides the lug *i* on the hanger-rod E, which, while they allow of the vertical movement of said hanger-rod, will not permit it to revolve.

The manner of attaching the hanger to a door is as follows: A hole, J, of sufficient diameter to admit the sleeve G, is bored vertically in the top of the door K. Near the lower part of the hole J is cut or formed another hole, L, at a right angle to the hole J, and passing beyond its opposite side. This hole L is sufficiently large to admit of the insertion of the nut H, which is larger in diameter than the hole J, but not large enough to allow it to revolve. The sleeve G is inserted in the hole J, and the thread *e* on its end caused to engage with the nut H by turning the said sleeve G by means of the lugs *h* on its upper end. The hole L may now be plugged and finished over in any suitable manner. To adjust the door up or down all that is necessary is to turn the sleeve G by means of a nail-set or any other suitable tool and a hammer.

What I claim is—

1. In a door-hanging device, the combination, with a strip or piece of wood, of a track connected therewith by a mortise-and-tenon joint to retain the track against lateral displacement, and screws inserted through the track from below upwardly into the upper strip or piece, whereby by tightening or loosening the screws the track will be raised or lowered, substantially as set forth.

2. In a door-hanging device, a roller provided with a hanging-rod, the lower end of said hanging-rod being provided with a sleeve, said sleeve being in turn provided at its lower end with a screw-thread adapted to engage with a nut, whereby the door to which said hanger is attached may be adjusted, substantially as set forth.

3. In a door-hanging device, the combination, with the hanger-rod having a roller jour-

naled in its upper portion, and provided with
a downwardly-projecting shank, of a sleeve
encircling said shank, and a stationary nut en-
gaging the screw-threaded lower portion of
5 said sleeve, the upper end of the sleeve being
provided with lugs for rotating the sleeve and
the door, substantially as set forth.

In testimony whereof I have signed my name
to this specification in the presence of two sub-
scribing witnesses.

DAVID L. JAKES.

Witnesses:

W. E. DONNELLY,
E. O. ORSBURN.