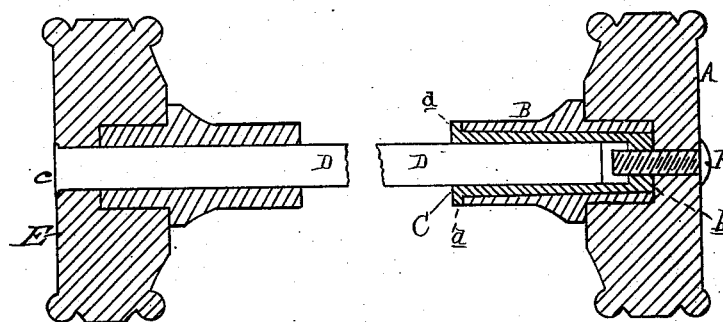


(No Model.)

O. M. HIDDEN.
KNOB ATTACHMENT.

No. 261,604.

Patented July 25, 1882.



Attest:
E. Sully.
W. Sprague

Inventor
Oliver M. Hidden
By W. S. Sprague

Atty.

UNITED STATES PATENT OFFICE.

OLIVER M. HIDDEN, OF DETROIT, MICHIGAN, ASSIGNOR TO THE UNION
DOOR KNOB COMPANY, OF SAME PLACE.

KNOB ATTACHMENT.

SPECIFICATION forming part of Letters Patent No. 261,604, dated July 25, 1882.

Application filed March 29, 1882. (No model.)

To all whom it may concern:

Be it known that I, OLIVER M. HIDDEN, of Detroit, in the county of Wayne and State of Michigan, have invented new and useful Improvements in Door Knob Attachments; and I hereby declare that the following is a full, clear, and exact description thereof, reference being had to the accompanying drawings, which forms a part of this specification.

10 The nature of this invention relates to certain new and useful improvements in the construction of attachments to door-knobs, by means of which said knobs may be applied to doors of various thicknesses.

15 The invention consists in the peculiar construction and application of a stirrup, which is held in frictional contact with the spindle by the neck of the knob, and in the various combinations of the parts, all as more fully
20 hereinafter set forth.

In the accompanying drawing, in which my invention is shown in longitudinal section, A represents a door-knob, which is provided with the neck or shank B in the usual manner. This
25 neck is provided with the usual central longitudinal hole, with the exception that in this case two of the sides of such hole taper from the larger outer end to the smaller inner end.

C represents a stirrup, the inner faces of the
30 legs of which are parallel to each other, and separated a distance equal to the thickness of the spindle D. The outer ends of the legs of this stirrup terminate in flanges or studs *a*, and from these studs or shoulders the outer

faces of the legs of the stirrup taper to the inner end or head, *b*, thus making such legs wedge shape. The spindle D is of a uniform size its entire length, one end designed to carry the knob above described, while the opposite end is driven into the knob E, having its protruding end planed down, as at *c*, thus rigidly securing such knob to place.

In practice the spindle D, carrying the knob E, is inserted through the door, and the stirrup C is placed over the protruding end of the spindle, the shoulders *a* entering the rose. The knob A, with its neck B, is then pushed upon the stirrup, which compresses the legs of the stirrup firmly upon the spindle, and the knob and stirrup are secured together by means of the screw F, which passes through the knob and engages with the head *b* of the stirrup.

I am aware of Patents Nos. 250,662 and 253,956, and do not claim the construction shown in either.

What I claim as new is—

In a door-knob attachment, the combination of the shank B, having inclined inner walls, yoke C, having legs with inclined outer surfaces, and stops *a*, spindle D, and screw F, with the knob A, all constructed and operating substantially as and for the purpose set forth.

O. M. HIDDEN.

Witnesses:

GEO. BROWN,
L. PLANT.