

(No Model.)

J. C. LANE.  
ENVELOPE CASE.

No. 261,731.

Patented July 25, 1882.

2627

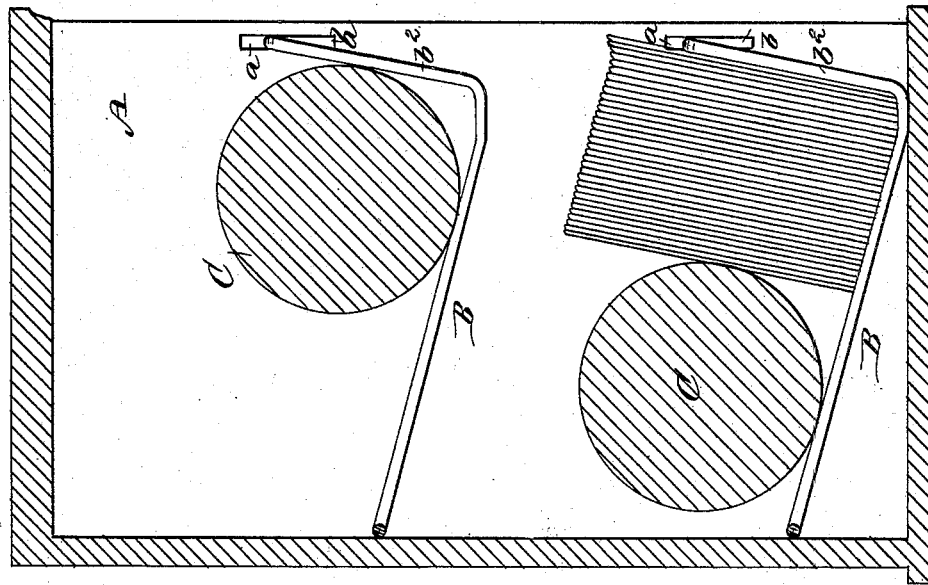


Fig. 1.

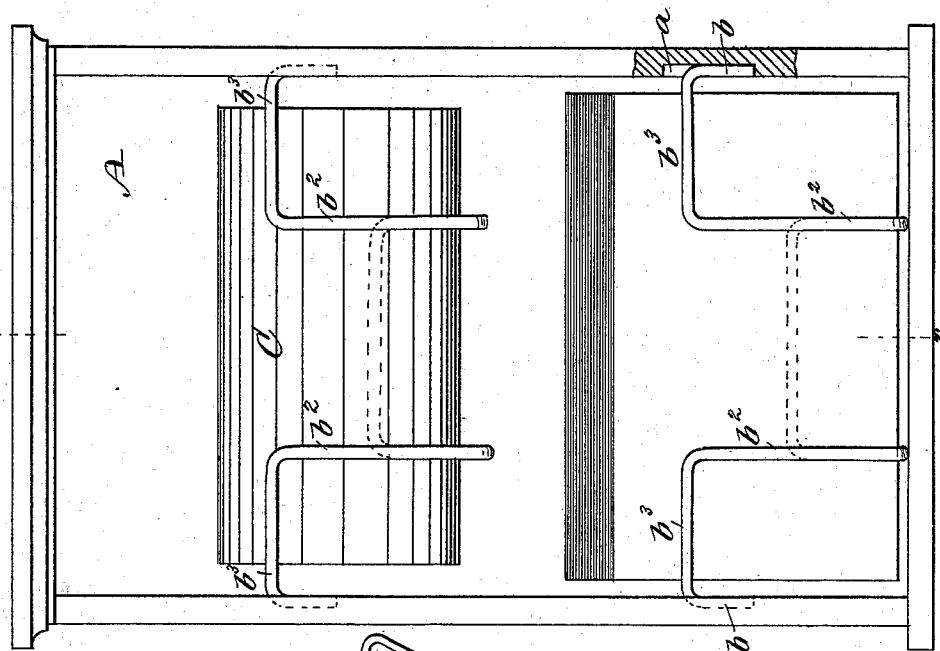
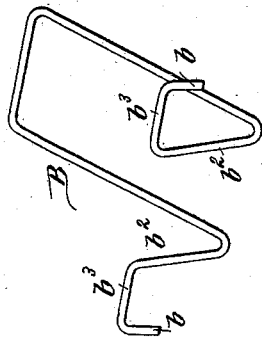


Fig. 3.



**WITNESSES:**

Theo. G. Foster  
C. Sedgwick

INVENTOR:

BY *J. L. Lane*  
*Munn Ho*  
ATTORNEYS.

# UNITED STATES PATENT OFFICE.

JACOB C. LANE, OF ELKHART, INDIANA.

## ENVELOPE-CASE.

SPECIFICATION forming part of Letters Patent No. 261,731, dated July 25, 1882.

Application filed April 13, 1882. (No model.)

*To all whom it may concern:*

Be it known that I, JACOB C. LANE, of Elkhart, in the county of Elkhart and State of Indiana, have invented a new and Improved Envelope-Case, of which the following is a full, clear, and exact description.

My invention consists in a novel construction, arrangement, and combination, with a case, of one or more racks for holding envelopes or postal-cards and a roller or block for supporting and moving toward the front of the case the said envelopes or postal-cards.

Reference is to be had to the accompanying drawings, forming part of this specification, in which similar letters of reference indicate corresponding parts in all the figures.

Figure 1 is a front view, partly in section, of an apparatus constructed according to my invention. Fig. 2 is a vertical sectional view taken in the line *xx* of Fig. 1. Fig. 3 is a detail perspective view of one of the racks.

A is a case, which may be divided into any number of compartments by means of partitions. This case, or each compartment thereof, is provided with vertical grooves *a* in the sides, near the front.

B is a rack of wire, constructed as shown in the perspective view, Fig. 3, being bent midway of its length, then upward, and then outward, and having its ends bent to form hooks *b* for engagement with the grooves *a*.

C is a roller, which is placed on the inclined part of the rack, behind the envelopes, and serves to support them in an upright position and to slide them down toward the front of the case as the front envelopes are removed. By giving the main part of the rack a greater in-

clination a block may be used instead of a roller.

For the purpose of placing envelopes in the rack it can be removed by pressing the parts *b*<sup>2</sup> toward each other, thus releasing the hooks *b* from the grooves *a* and allowing the rack to be withdrawn and replaced.

The compression may be accomplished by the thumb and finger, or by means of a V-shaped wire having its ends formed into hooks. The wire is held with its apex upward, the hooks are engaged with the horizontal portions *b*<sup>3</sup>, and the apex then turned downward, which has the effect of pressing the upright portions *b*<sup>2</sup> toward each other.

The advantage of my invention as a holder for different sizes of envelopes or postal-cards and different denominations of stamped envelopes is that it presents the face of the envelope to the view of the user, which is not done in pigeon-hole cases. Consequently mistakes are not made by taking an envelope from the wrong pigeon-hole.

Having thus fully described my invention, what I claim as new, and desire to secure by Letters Patent, is—

The rack B, formed of a wire bent midway of its length, then upward at *b*<sup>2</sup>, then horizontally outward at *b*<sup>3</sup>, and then formed into hooks *b*, in combination with the case A, provided with the grooves *a*, substantially as and for the purpose herein described.

JACOB C. LANE.

Witnesses:

ISAAC C. WILLIAMS,  
FRANK B. ERWIN.