

(No Model.)

2 Sheets—Sheet 1.

C. A. FARGO.
GUIDE FOR STAMP MILLS.

No. 263,034.

Patented Aug. 22, 1882.

FIG. 1.

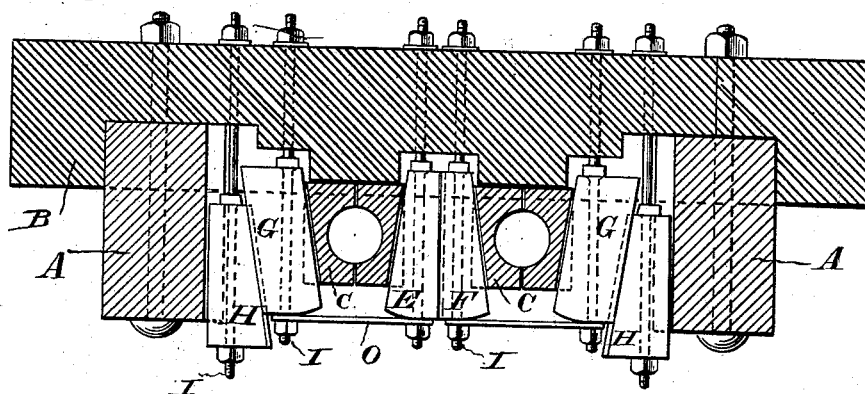


FIG. 2.

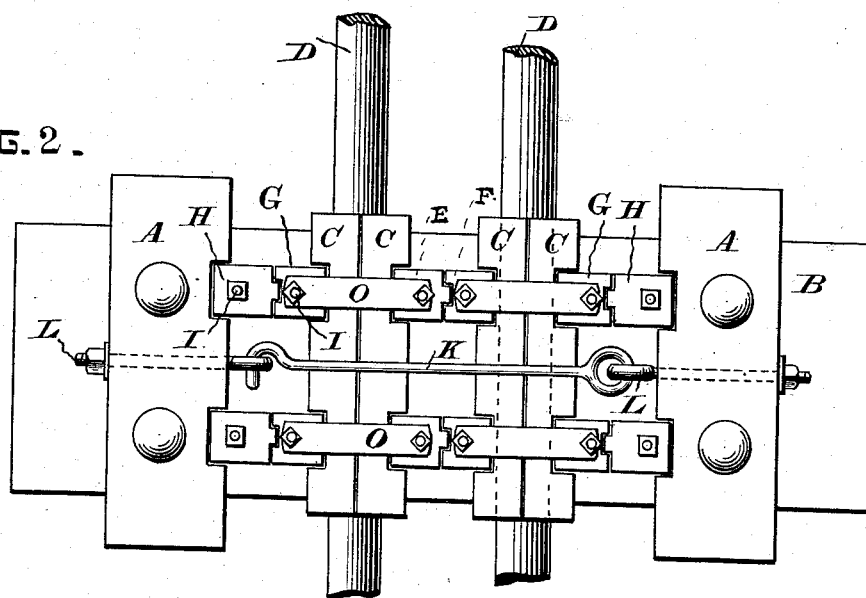
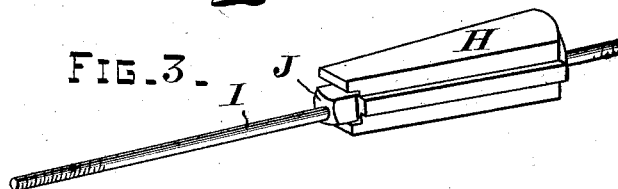


FIG. 3.



WITNESSES.

Wilbur Bradford
George Derby.

INVENTOR.

Corydon A. Fargo.
Per C. M. Smith
Attorney

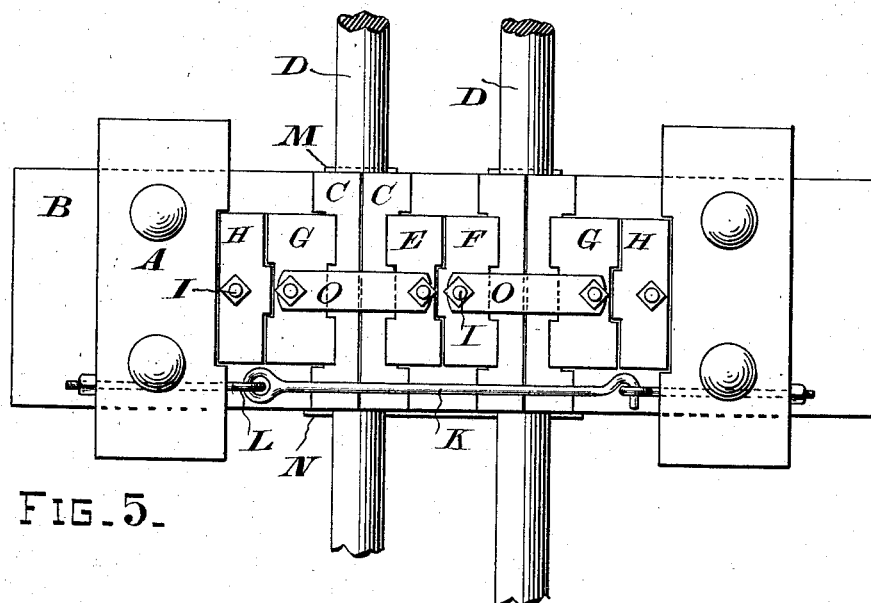
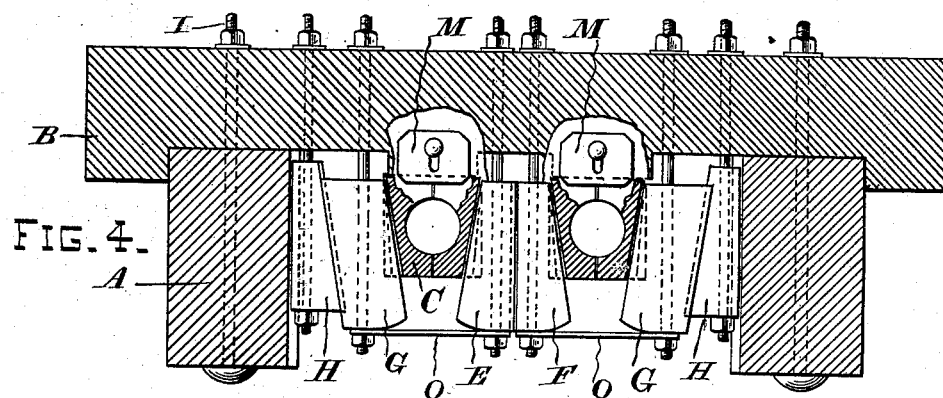
(No Model.)

2 Sheets—Sheet 2.

C. A. FARGO.
GUIDE FOR STAMP MILLS.

No. 263,034.

Patented Aug. 22, 1882.



WITNESSES.
Wilmer Bradford
George Derby.

INVENTOR.
Corydon A Fargo
Per C. M. Smith
Attorney

UNITED STATES PATENT OFFICE.

CORYDON A. FARGO, OF WALKERVILLE, MONTANA TERRITORY.

GUIDE FOR STAMP-MILLS.

SPECIFICATION forming part of Letters Patent No. 263,034, dated August 22, 1882.

Application filed June 10, 1882. (No model.)

To all whom it may concern:

Be it known that I, CORYDON A. FARGO, a citizen of the United States, and residing at Walkerville, in the county of Silver Bow and Territory of Montana, have invented a certain new and useful Improvement in Guides for Stamp-Mills, of which the following is a specification.

The objects of my invention are to provide guides for stamp-mills so constructed and arranged that all of the parts will be rigidly and securely held together, and in which any one of the series can be taken out and replaced without disturbing the others or the stamp-stems of the battery. I accomplish these objects by the mechanism illustrated in the accompanying drawings, in which—

Figure 1 is a sectional plan view of my improved guide for stamp-mills. Fig. 2 is a front elevation of the same. Fig. 3 is a perspective view of a key and set-bolt. Fig. 4 is a sectional plan view of a modification, and Fig. 5 is a front elevation of the same.

Similar letters of reference are used to designate like parts throughout the several views.

To the rear of the battery-posts A A is bolted the guide-timber or plate B, which is mortised and pierced to receive the bushings, keys or wedges, and bolts, as indicated in plan in Figs. 1 and 4.

At any suitable points between the battery-posts I place the bushings C C, which are halved, as shown, and within which the stamp-stem D rises and falls. The exterior side face of each section of the bushing is provided with two beveled mortises, which decrease in depth from front to rear and receive the gibs and beveled keys by which the bushings are clamped.

The key E has a tongue which fits into a mortise cut in the adjoining face of the key F, as shown in Fig. 2, and the opposite or beveled faces of said keys enter the inclined mortises cut into the faces of the interior sections of bushings near their upper and lower ends. The mortises in the exterior sections of the bushings receive the gibs or cotters G G, which are made of equal width throughout their length, and have plain mortises, within which fit the feathers or tongues upon the adjoining beveled keys H H, held in grooves or

channels cut in the sides of the battery-posts. Each key and gib is provided with a set-bolt, I, which extends through it lengthwise and passes through the guide-timber B, and is provided with suitable nuts and washers. Each set-bolt has a square shoulder or swell, J, formed upon it about midway of its length, and which enters a corresponding recess cut in the inner end of each gib or key, and thus the turning of the bolt is prevented when the said keys and gibs are being tightened up.

As the tightening up of the wedges, keys, and gibs may have a tendency to spread apart the battery-posts A A, I provide the hook K and eyebolts L L, the shanks of which are threaded and furnished with taps or nuts, by which means tension may be applied for the purpose of drawing the battery-posts toward each other.

Upon the top and bottom faces of the guide-timber B, I attach the metal plates M N, which serve to retain the bushings in place and prevent vertical movement of the same when the mill is in operation. The upper plates, M, are made adjustable by means of a slot and screw-bolt, as shown in Fig. 4.

In order that the keys, gibs, and bushings connected with one stamp-stem may not be disturbed when removing or replacing those of the adjoining stamp-stems, I connect the gibs and keys upon the opposite sides of each bushing by means of the transverse horizontal straps or binding-plates O, which are held to place by the set nuts and bolts I, and at the same time form washers for the nuts on said bolts.

In the modification shown in Figs. 4 and 5 the principle of construction and arrangement is the same as that hereinbefore described, with the exception that a single series of large centrally-located gibs and keys is used.

It will be readily seen that by this construction and arrangement of the stamp-guides I am enabled to remove or repair the stamp-stem, guides, or bushing for a given stamp-stem without interfering in the slightest degree with the operation of the adjoining stamp-stems, and that means are provided whereby the springing apart of the battery-posts is prevented and they are held rigidly to place, and that vertical movement of the bushings

is prevented by the upper and lower plates attached to the guide-timbers.

Having thus described my invention, what I claim, and desire to secure by Letters Patent, is—

1. In a stamp-mill, the combination, with the battery-posts and guide-timbers, of the mortised bushings C, beveled keys E F H, gibs G G, and suitable screws or set bolts and nuts, substantially as and for the purpose described.
2. The combination, in a stamp-mill, of the battery-posts A A, guide-timber B, hook K,

eyebolts L L, divided and mortised bushings O O, upper and lower plates, M N, and the strap-irons O O, connecting opposite keys and gibs, all substantially as and for the purpose described.

In testimony that I claim the foregoing I have hereunto set my hand and seal this 31st day of May, 1882.

CORYDON A. FARGO. [L. S.]

Witnesses:

GEORGE W. BUEL,
JOHN H. B. FORTE.