

(No Model.)

G. L. LORD.

ELEVATOR BUCKET ATTACHMENT.

No. 263,924.

Patented Sept. 5, 1882.

Fig. 1.

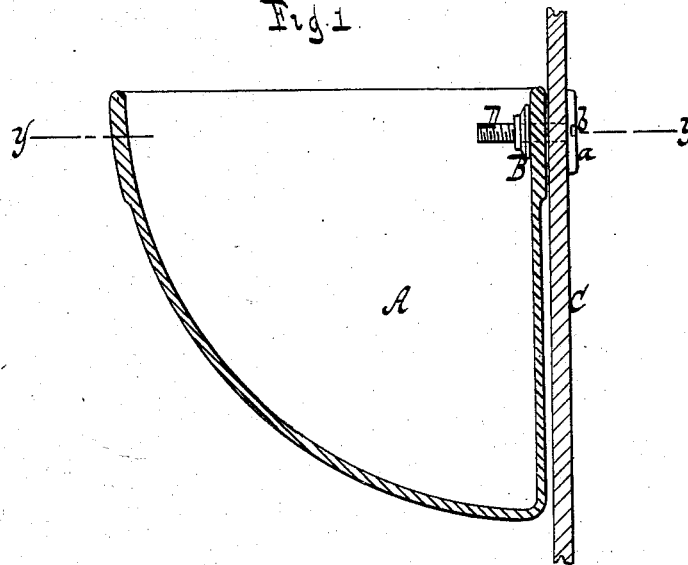
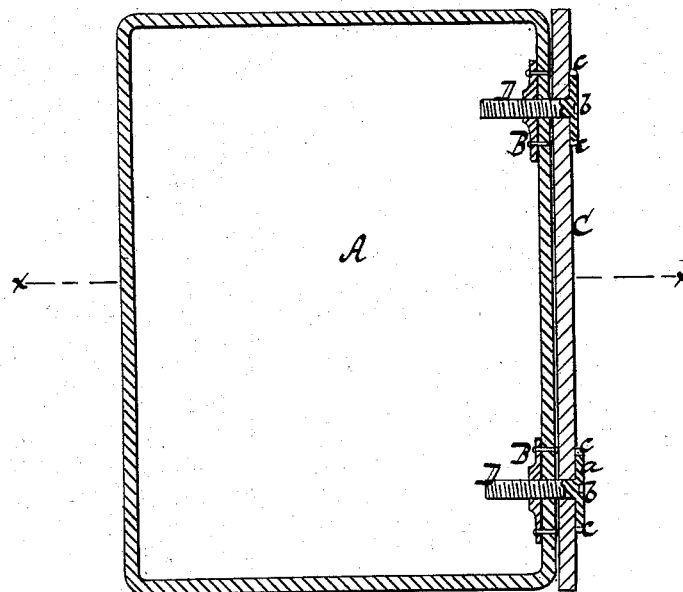


Fig. 2.



WITNESSES:

William Miller
Otto. Hupeland

INVENTOR

George I Lord
BY *Van Santvoord & Hauck*
ATTORNEYS

UNITED STATES PATENT OFFICE.

GEORGE L. LORD, OF WAUPACA, WISCONSIN.

ELEVATOR-BUCKET ATTACHMENT.

SPECIFICATION forming part of Letters Patent No. 263,924, dated September 5, 1882.

Application filed April 4, 1882. (No model.)

To all whom it may concern:

Be it known that I, GEORGE L. LORD, a citizen of the United States, residing at Waupaca, in the county of Waupaca and State of Wisconsin, have invented new and useful Improvements in Elevator-Bucket Attachments, of which the following is a specification.

This invention consists in an elevator-bucket attachment consisting of two nuts which are firmly secured to the inner surface of the bucket, and two flat-headed bolts which pass through the belt and engage with the nuts, so that the buckets can be readily connected to the belt, and when connected are not liable to work loose spontaneously.

In the drawings, Figure 1 represents a transverse vertical section in the plane $x x$, Fig. 2. Fig. 2 is a horizontal section in the plane $y y$, Fig. 1.

Similar letters indicate corresponding parts.

In the drawings, the letter A designates an elevator-bucket, which is made of sheet metal or any other suitable material, and the upper portion of which is by preference strengthened by doubling over the sheet metal, or by any other means which will produce the desired effect. To the inner surface of the bucket, near its upper edge, are firmly secured two nuts, B B, either by rivets, as shown in Fig. 2, or by any other suitable means, the side of the bucket being provided with holes to correspond with the holes in the nuts.

For the purpose of securing the bucket to

the belt C, I use bolts D, which pass through the belt and engage with the nuts B B, as shown in the drawings. The heads a of these bolts are flat, and they are provided with notches b in their center to engage with a screw-driver, and with notches b in their peripheries to engage with a suitable wrench. When the bolts are screwed up firmly their heads sink into the belt, so that they produce no unevenness of much consequence, and at the same time they are not liable to unscrew spontaneously, the friction between the inner surfaces of their heads and the belt being sufficient to retain them securely in position. And since the nuts are firmly and permanently fastened to the buckets, my buckets are not liable to work loose, and a bucket attachment is obtained which is cheap, durable, and secure.

What I claim as new, and desire to secure by Letters Patent, is—

The herein-described elevator-bucket attachment, consisting of two nuts which are firmly secured to the inner surface of the bucket, and two flat-headed bolts which pass through the belt and engage with the nuts, substantially as set forth.

In testimony whereof I have hereunto set my hand and seal in the presence of two subscribing witnesses.

GEORGE L. LORD. [L. S.]

Witnesses:

IRVING P. LORD,
J. A. CHESLEY.