

(No Model.)

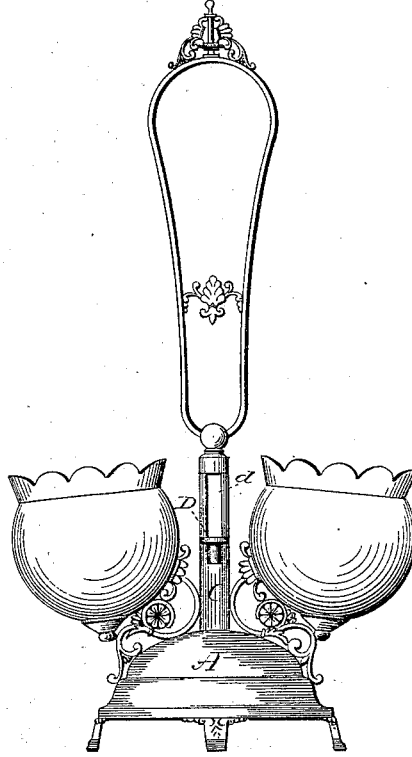
J. B. BEACH.

SPOON HOLDER

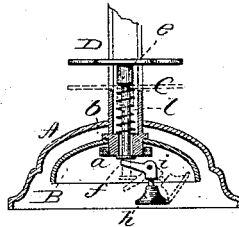
No. 264,226.

Patented Sept. 12, 1882.

*fig. 1.*



*fig. 2*



Witnesses  
*J. A. Murray*  
*Jos. C. Earle*

*Joseph B. Beach,*  
Inventor  
By atty-  
*Wm Earle*

# UNITED STATES PATENT OFFICE.

JOSEPH B. BEACH, OF MERIDEN, ASSIGNOR TO SIMPSON, HALL, MILLER & CO., OF WALLINGFORD, CONNECTICUT.

## SPOON-HOLDER.

SPECIFICATION forming part of Letters Patent No. 264,226, dated September 12, 1882.

Application filed August 10, 1882. (No model.)

*To all whom it may concern:*

Be it known that I, JOSEPH B. BEACH, of Meriden, in the county of New Haven and State of Connecticut, have invented a new Improvement in Spoon-Holders; and I do hereby declare the following, when taken in connection with accompanying drawings and the letters of reference marked thereon, to be a full, clear, and exact description of the same, and which said drawings constitute part of this specification, and represent, in—

Figure 1, a side view; Fig. 2, a vertical central section.

This invention relates to an improvement in spoon-holders, casters, and like articles of table-furniture, the object being to arrange a bell within the base of the article and provide a means for sounding the bell within the stem, and without necessarily extending that mechanism to the top of the article, as in the previous constructions, in which the bell is entirely hidden within the base, and in such construction the invention consists.

A represents the base, which may be of any desirable form, it only being essential that its interior shall be shaped so as to permit the bell B to be hung therein; C, the stem, which extends up from the base to support the top of the article. I make this stem tubular and extend it down through the base, and to its lower end secure the bell by means of a nut, *a*, upon the inside of the bell, clamping it against the collar *b* on the stem above, as seen in Fig. 2. A short distance above the base is a transverse finger-piece, D, arranged in a vertical slot, *d*, through the stem, and preferably so as to project each side. This finger-piece is attached to or in connection with a spindle, *e*, extending down through the stem, and so as to bear upon an arm, *f*, of the bell-hammer *h*. The bell-hammer is hung at one side of the central line of the spindle, as at *i*, and so that the spindle may act upon the arm *f* as a lever to swing the hammer. Around the spindle *e* and within the stem is a helical spring, *l*, arranged to take a seat at its lower end within the stationary part of the tube and its upper end to bear upon the spindle, so as to force it upward and hold it away from active connection with the hammer, and so that the

weight of the spindle and the finger-piece is entirely detached from and not dependent for its support upon the hammer. To strike the bell, place the finger upon the finger-piece and press it quickly downward, as indicated in broken lines, Fig. 2. The spindle will strike the arm *f* of the hammer and throw the hammer up against the bell, as seen in broken lines, Fig. 2.

By supporting the spindle upon a spring independent of the hammer I avoid the accidental ringing of the bell, which necessarily occurs in the use of a bell in which the spindle rests upon the arm of the hammer.

If preferred, the finger-piece may be in the form of a lever hung in the stem, and so that by depressing or moving it at one side it will cause the descent of the spindle, it only being essential to my invention that there shall be the spindle within the stem supported upon the spring independent of the hammer, with an extension through the stem by which the spindle may be depressed to sound the bell.

I have represented in the drawings a spoon-holder which is sufficient, for illustration, to enable those skilled in the art to which this invention pertains to apply it to other articles of table-service.

I am aware that bells have been arranged in the base of articles of table-furniture and with various devices for striking the bell. I therefore do not claim broadly such an arrangement of a call-bell; but

What I do claim is—

In spoon-holders and like articles of table-furniture, the bell arranged within the base, combined with the hammer hung therein, with its arm extending to the center, a tubular stem extending upward from said base, with a spindle within said stem, a spring to support said spindle, and an extension from said spindle through the said stem to the outside to form a finger-piece by which the said spindle may be depressed to strike the bell, substantially as described.

JOSEPH B. BEACH.

Witnesses:

WILBUR F. DAVIS,  
C. F. MONROE.