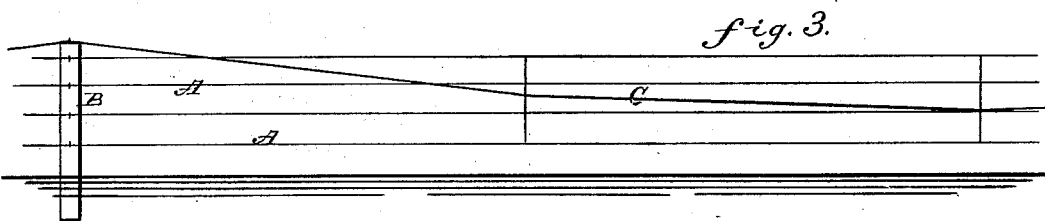
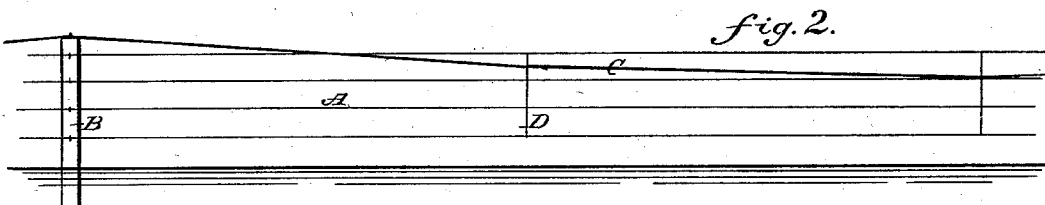
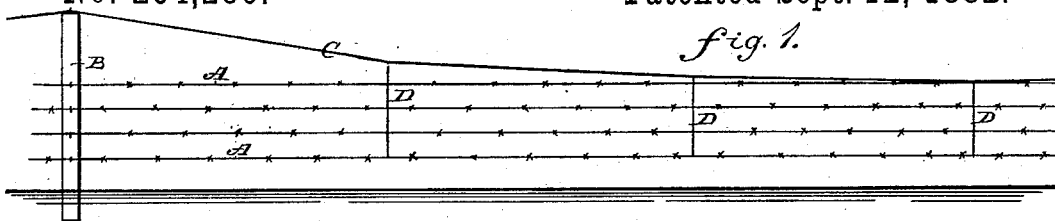


(No Model.)

F. M. HARRIS.  
BARBED WIRE FENCE.

No. 264,286.

Patented Sept. 12, 1882.



WITNESSES:

*Chas. Dyer*  
*C. Sedgwick*

INVENTOR:

*F. M. Harris*

BY

*Munn & Co*

ATTORNEYS.

# UNITED STATES PATENT OFFICE.

FRANK M. HARRIS, OF ST. CHARLES, MISSOURI, ASSIGNOR TO HIMSELF  
AND HENRY A. BAILEY, OF SAME PLACE.

## BARBED-WIRE FENCE.

SPECIFICATION forming part of Letters Patent No. 264,286, dated September 12, 1882.

Application filed May 12, 1882. (No model.)

*To all whom it may concern:*

Be it known that I, FRANK M. HARRIS, of St. Charles, in the county of St. Charles and State of Missouri, have invented a new and  
5 Improved Barbed-Wire Fence, of which the following is a full, clear, and exact description.

The object of my invention is to cheapen the construction of barbed-wire fence by dispensing with a portion of the posts ordinarily used.

10 The invention consists of placing the posts a considerable distance apart—say one hundred feet—and substituting for the intermediate posts a suspension system consisting of a catenary wire supported by the posts to which  
15 the horizontal wires are all attached at regular intervals by vertical wires or strips, as hereinafter fully described, and pointed out in the claim.

Reference is to be had to the accompanying  
20 drawings, forming part of this specification, in which similar letters of reference indicate corresponding parts in all the figures.

Figures 1, 2, and 3 are side elevations of barbed-wire fence constructed according to my  
25 improved method.

A represents the longitudinal barbed wires of the fence; B, the posts; C, the catenary suspension-wire, and D the verticals connecting the horizontals and catenary together.

30 In Fig. 1 the posts are represented as being sufficiently higher than the wires A for the

catenary wire to connect with the verticals at top of the horizontals in the lowest point of its suspension. Figs. 2 and 3 show the suspension-wire mounted on shorter posts and connected below the top of the fence in the lower  
35 portion of its suspension. The catenary wire may be plain or barbed, as preferred. A vertical wire, D, is placed on each side of the horizontal wires and then twisted between the said  
40 horizontal wires, beginning at the top, to allow the wires to contract by the twist. The catenary may be twisted in with the horizontals, or may be attached to the verticals afterward by a wrap or cold sheet.

45 Iron posts may be used with this construction, and the saving over the ordinary fence with wooden posts will be considerable.

Having thus fully described my invention, I claim as new and desire to secure by Letters  
50 Patent—

In a wire fence, the combination, with the posts B and a series of horizontal wires, A, secured to said posts, of the catenary wire C, and a series of vertical wires, D, arranged in  
55 pairs, secured at their upper ends to the catenary and twisted around the horizontal wires, substantially as herein shown and described.

F. M. HARRIS.

Witnesses:

C. S. THACHER,  
H. BASELER.