

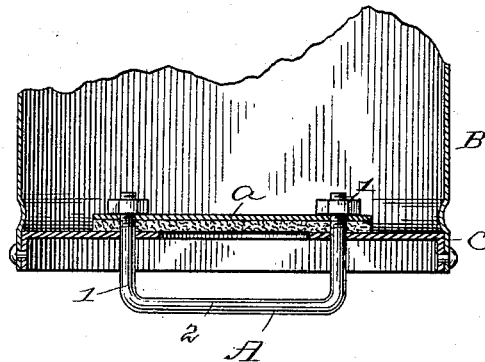
(No Model.)

W. H. ROE.

VALVE FOR WELL BUCKETS.

No. 264,342.

Patented Sept. 12, 1882.



Witnesses
Walter Malden
H. L. Middleton

Inventor
William H. Roe
by Elmer Spear
Atty.

UNITED STATES PATENT OFFICE.

WILLIAM H. ROE, OF ST. JOSEPH, MISSOURI.

VALVE FOR WELL-BUCKETS.

SPECIFICATION forming part of Letters Patent No. 264,342, dated September 12, 1882.

Application filed March 10, 1882. (No model.)

To all whom it may concern:

Be it known that I, WILLIAM H. ROE, of St. Joseph, in the county of Buchanan and State of Missouri, have invented a new and useful Improvement in Valves for Well-Buckets; and I do hereby declare that the following is a full, clear, and exact description of the same.

My invention is an improvement upon the device for which Letters Patent were granted me on the 5th day of July, 1881. In that patent the valve was held to a reversible well-bucket bottom by means of arms which passed through holes in the bottom and were provided with nuts. The two arms were formed of a continuous piece of wire bent twice at right angles, the horizontal part resting upon the back of the valve, and was soldered thereto, while the ends projected through the bottom. Under some circumstances these ends are liable to be bent, and I have provided an improved mode of connecting the valve to the bottom without incurring any liability of this sort.

My invention consists in reversing the position of the rod which forms the arm-connection between the valve and the bottom, and in connecting the ends to the valve and leaving the horizontal part on the outside.

In the accompanying drawing the figure shows a section of a well-bucket having my improved reversible bottom attached, and with improved form of device for holding the valve to the bottom. The figure is a central vertical section of the bucket, the connecting-rod being in side elevation. This connecting-rod is shown at A. It is formed of a piece of rod or

wire bent twice at right angles, so as to form two arms, 1 1, and a horizontal central part, 2; but the arms 1 1, instead of projecting outward and downward, as in my said patent, project inward and pass through the valve *a*, to which they are held by nuts and solder, or in any convenient way. The arms 1 1 are of sufficient length to allow of necessary movement to the valve. The central horizontal piece, 2, limits the movement of the valve and prevents the arms from bending by its bracing action upon both. As the ends do not project down into the well, there is no danger of their becoming battered or injured in any way.

I have represented the body of the bucket to which my improvement is applied at B and the bottom at C.

Although I have shown my improved valve as attached to a bucket containing my improved reversible well-bucket bottom, it is obvious that it may be used with good effect upon any kind of bucket in which a valve is used.

What I claim is—

In combination with a reversible well-bucket bottom and its valve, the valve-connection A, consisting of the central horizontal part, 2, the arms 1 1, the said central part being placed outside and said arms being connected at their ends to the valve, substantially as described.

In testimony whereof I have signed my name to this specification in the presence of two subscribing witnesses.

WILLIAM H. ROE.

Witnesses:

GEO. W. WILBER,
E. F. LOCKWOOD.