

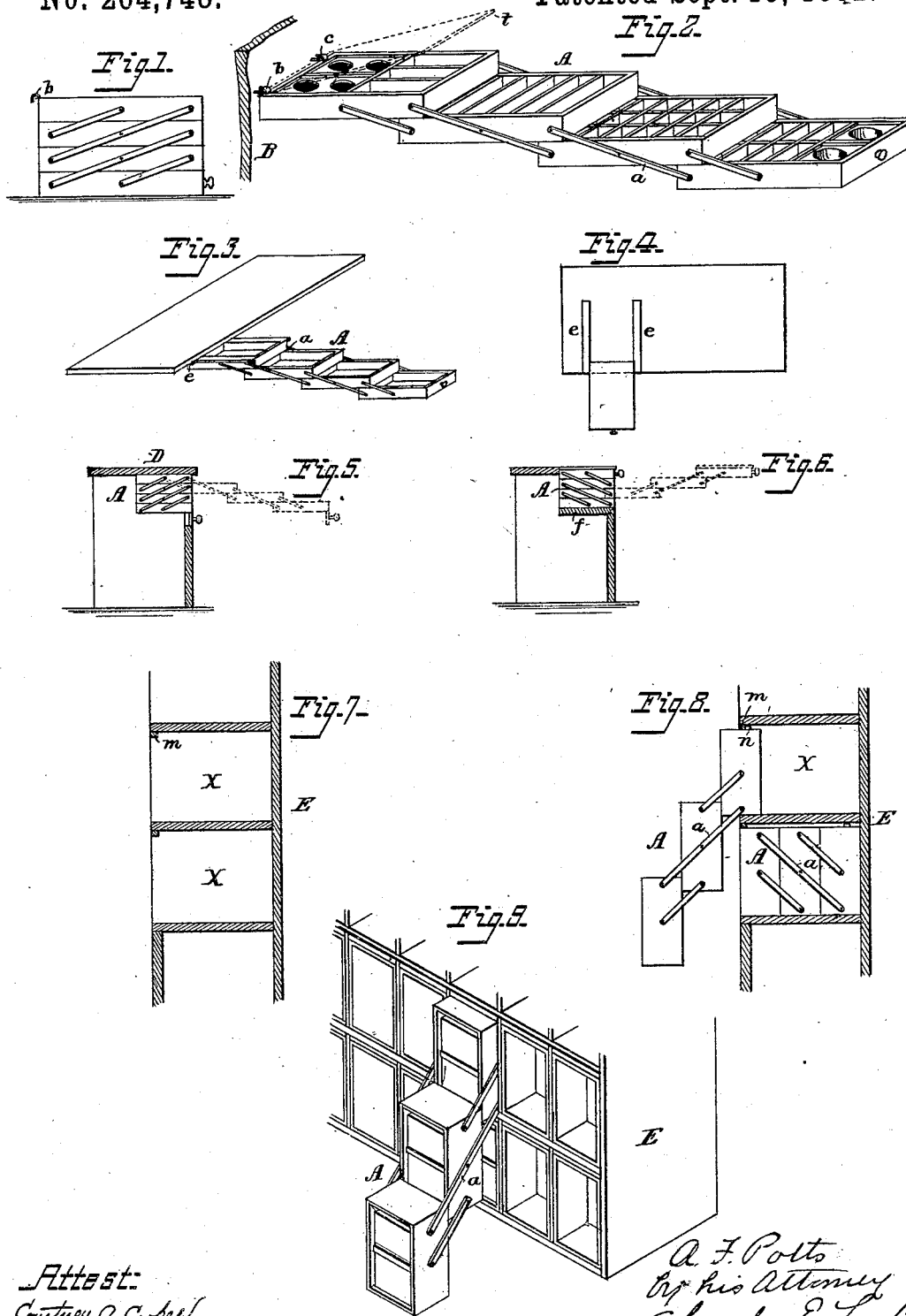
(No Model.)

A. F. POTTS.

EXTENSIBLE RECEPTACLE FOR PAPERS, &c.

No. 264,748.

Patented Sept. 19, 1882.



Attest:
Cuthbert A. Cooper
H. C. S. Pannaman.

A. F. Potts
by his Attorney
Charles E. Foster

UNITED STATES PATENT OFFICE.

ALFRED F. POTTS, OF INDIANAPOLIS, INDIANA.

EXTENSIBLE RECEPTACLE FOR PAPERS, &c.

SPECIFICATION forming part of Letters Patent No. 264,748, dated September 19, 1882.

Application filed April 11, 1882. (No Model.)

To all whom it may concern:

Be it known that I, ALFRED F. POTTS, of Indianapolis, Marion county, Indiana, have invented certain new and useful Improvements in Extensible Receptacles for Papers, Toilet Articles, &c., of which the following is a specification.

My invention is a receptacle for letters, papers, money, or other articles for which files and drawers are usually employed; and it consists of a series of trays or pockets connected by arms and sustained by any suitable support, as fully described hereinafter, so as to be reduced to a very compact form or extended to display the contents, consisting of papers, toilet articles, money, &c.

In the drawings, Figure 1 shows my improved receptacle reduced to a compact form and detached from its support. Fig. 2 shows the same extended and supported. Fig. 3 shows the same combined with a shelf or table-top. Fig. 4 is a view of the device shown in Fig. 3 inverted, the receptacle being closed. Fig. 5 is a section of a counter with the receptacle attached. Fig. 6 shows a modification of Fig. 5 in section. Figs. 7 and 8 show the receptacle, as constructed to hold papers, compacted and extended. Fig. 9 is a perspective view of

The receptacle consists of a series of smaller receptacles, as trays, boxes, or pockets, A, and two series of side arms, *a a*, pivoted thereto, as shown, so that the trays may be folded one upon or against the other, as shown in Figs. 1, 5, 6, and 8, or extended, (like a lazy-tongs,) as shown in Figs. 2, 3, 6, 8, and 9. The boxes A are constructed in any suitable manner, according to the purpose for which they are intended, and are connected permanently or detachably to a table, counter, case, upright, wall, or other suitable support. Thus in Figs. 1 and 2 one of the trays is provided with hooks *b* for hanging the receptacle to eyes *c* of an upright or wall, B, so that the trays can be brought together into a rectangular shape, as in Fig. 1, and supported by the upright, or extended, as in Fig. 2, to expose the contents of all the trays.

In Figs. 3 and 4 the upper tray is fitted between guides *e e*, beneath a sewing-machine-

table top or a counter or shelf, and the remaining trays may be folded together or extended, as shown.

In Fig. 5 the upper tray is secured to the under side of a counter-top, D, so that the structure may be compacted, as in full lines, or extended, as in dotted lines.

In Fig. 6 the lower tray is fixed to a shelf, *f*, below the counter-top, with which the top of the upper tray is flush when closed; or the upper section may be a block constituting a part of the counter-top.

In Figs. 7 and 8 the receptacle is arranged to fit and slide in the compartment X of a case, E, Fig. 7, a rib, *n*, on the inner tray, and lip *m*, under the top of the compartment, limiting the outward movement of the receptacle; and the other trays or pockets may be folded against the first and all moved into the compartment, as in Fig. 8, or slid out and extended, as in Figs. 8 and 9.

It will be obvious that the trays may be of any desired depth and length, and that they may be used for any desired or suitable purpose, as for toilet articles, dental tools, money, papers, &c.

It will be evident that a suitable catch or lock may be employed for holding the trays together.

In Fig. 2 the upper tray is shown with a hinged or sliding lid, *t*, in dotted lines.

I claim—

1. A receptacle consisting of a series of smaller receptacles, A, connected by the series of jointed arms *a a*, so that all may be brought together or extended, one of said trays being connected to a support by which the receptacle is sustained, whether closed or extended, as specified.

2. The combination, with a shelf, of a series of trays connected by pivoted arms attached to the shelf, so as to be folded against the same, and also extended, substantially as specified.

In testimony whereof I have signed my name to this specification in the presence of two subscribing witnesses.

ALFRED F. POTTS.

Witnesses:

JOHN L. GRIFFITHS,
H. E. HANSMANN.