

A. ENGELMANN.
Bracelet.

No. 265,044.

Patented Sept. 26, 1882.

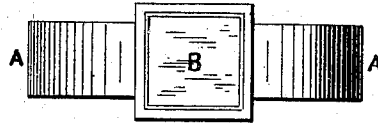


FIG. 1.

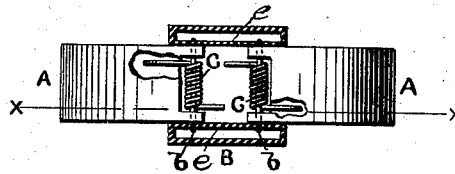


FIG. 2.

FIG. 3.

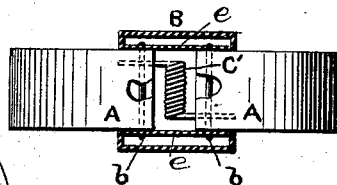


FIG. 3.

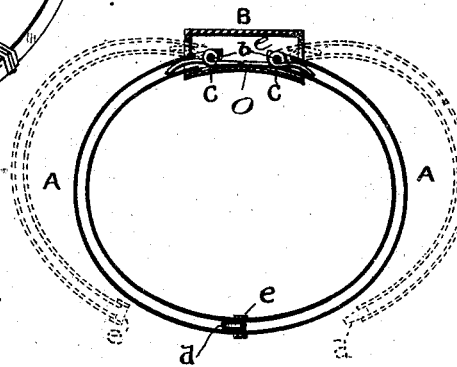
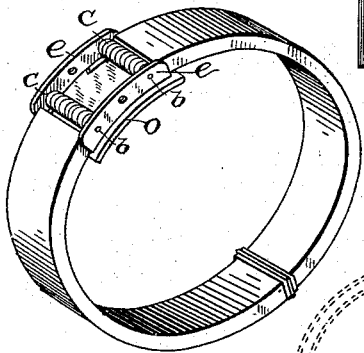
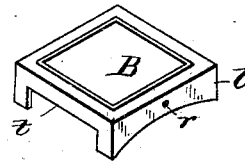


FIG. 4.

FIG. 5.



WITNESSES.

Edson S. Jones
Wm. A. Rader

INVENTOR

A. Engelmann

UNITED STATES PATENT OFFICE.

ALEXANDER ENGELMANN, OF NORTH ATTLEBOROUGH, MASSACHUSETTS.

BRACELET.

SPECIFICATION forming part of Letters Patent No. 265,044, dated September 26, 1882.

Application filed November 27, 1873.

To all whom it may concern:

Be it known that I, ALEXANDER ENGELMANN, of North Attleborough, in the county of Bristol and State of Massachusetts, have invented a new and useful Improvement in Bracelets; and I do hereby declare that the following specification, taken in connection with the accompanying drawings, forming a part of the same, is a full, clear, and exact description thereof.

This invention relates to that class of bracelets in which springs are used to cause it to close automatically on the wrist; and the invention consists in the novel construction of the central open-ended band or part, within which the wings are hinged, as hereinafter more fully set forth.

Figure 1 is a top plan view of a bracelet complete. Fig. 2 is a similar view showing the central portion cut through transversely to show the method of hinging the arms and the arrangement of the springs, and Fig. 3 is a similar view showing the application of a single spring. Fig. 4 is a longitudinal vertical section. Fig. 5 is a perspective view with the cover or cap removed, and Fig. 6 is a perspective view of the cover or cap detached.

Various methods have been devised for applying springs to bracelets, both for causing them to close and also to cause them to open automatically.

My present invention relates to the special construction of the central portion to which the wings of the bracelet are hinged; and it consists in a detachable cover for the central section or plate, and in a novel construction of said central section or plate to adapt it to receive the detachable cover in such manner as to cover the central section or plate, with its springs, &c., and thereby make a more complete and ornamental finish.

To construct a bracelet on my plan, I first provide the two semicircular segments or wings, A, which may be made of any desired form transversely, those shown in the drawings being rectangular to represent a heavy band. I then provide a plate, O, on which are secured two longitudinal vertical ribs or flanges, e, which, as shown in Fig. 5, are set at such a distance apart as to permit the ends of the wings A to fit between them, and to which they are hinged by transverse pivot-pins b, as shown in

Figs. 2, 3, 4, and 5, the plate O being made of such a width as to project laterally a short distance beyond the ribs e on each side, for a purpose to be hereinafter explained. The springs U are coiled around the pivot-pins b, and have one end bearing on the plate O, while the opposite end bears on the wing in such manner as to cause the wings to close automatically, as represented in Fig. 2, in which view two springs are shown, one for each wing. If preferred, however, a single spring may be used, in which case it will be located midway between the pivot-pins b and have its ends arranged to bear one upon each wing, respectively.

It will be understood that in the manufacture of these articles the springs, pivot-pins, and their supporting-ribs, or, in brief, the whole interior portion, is made of some cheap or base metal, usually of brass, while the exterior is made of gold or some of the precious metals, and that in order to impart to the article when completed a finished and ornamental appearance it is desirable to cover up and hide from view the springs, joints, and all the interior portion; and to accomplish this I provide a cap or cover, B, of a form corresponding with that of the plate O, or with that of the central portion of the bracelet, whatever that may be. This cap or cover B is made of a size to correspond with that of plate O, and has vertical flanges l on each side, so curved along their lower edges as to fit accurately upon the projecting faces of said plate O, while at its opposite ends the vertical walls are cut away so as to form a recess, t, as shown in Fig. 6, these recesses t thus permitting the cap to fit over the wings A outside each hinge or joint, and permitting the wings to be opened when the cap or cover is in place. It will thus be seen that this cap or cover B forms what may be termed an "open-ended transverse band," and that when applied to the plate O in the manner described its side walls or flanges, l, will fit over the ribs e, coming flush with the outer edges of the plate O, thus covering and hiding from view the joints, springs, ribs, and all the interior portions, and making a nice finish for the exterior of this central member or portion of the bracelet. This cap B will of course be made of gold or other ornamental metal, and may have a setting, monogram, or any desired

ornament on its top. It is secured in place by a transverse pin, which is inserted through holes *r* in its flanges *l* and corresponding holes in each of the ribs *e*. By this construction
5 not only are the ribs and the hinge-pins hidden from view on the sides, as well as the plate *O* and the springs on top, but, in addition to that, it affords means by which the cap can be readily removed without injury whenever it is
10 desired to get at the springs or other parts for repair, it only being necessary to remove the pin from holes *r*, when the cap or cover can be lifted off.

Having thus described my invention, what
15 I claim is—

1. In a bracelet having its wings or side pieces, *A*, hinged to a central member or plate, a detachable cap or cover constructed and ar-

ranged to operate substantially as and for the purpose set forth. 20

2. The combination, in a bracelet, of a central plate, *O*, provided with the ribs or flanges *e* for hinging the arms to and a detachable cap or cover adapted to fit over said plate and ribs, substantially as shown and described. 25

3. The combination, in a bracelet, of a central section or plate having the wings hinged thereto, with one or more springs, arranged to operate upon said wings so as to make them close automatically, and a detachable cap or
30 cover arranged to cover said springs and joint-pins, substantially as described.

ALEX. ENGELMANN.

Witnesses:

EDSON S. JONES,
WM. A. CADY.