

(No Model.)

2 Sheets—Sheet 1.

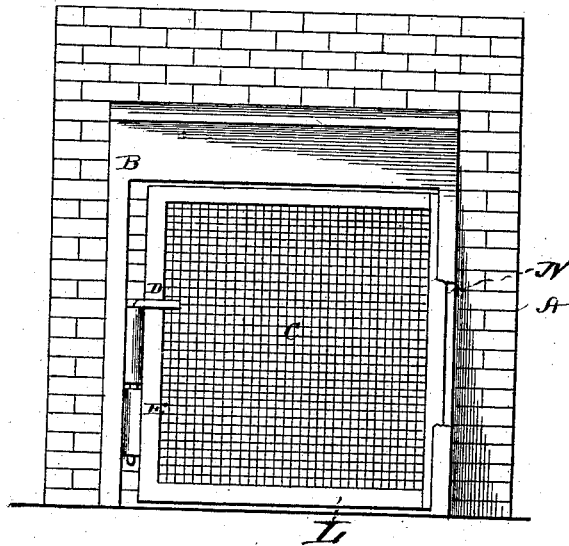
S. S. STEDMAN & W. T. BARKER.

GRATE FENDER.

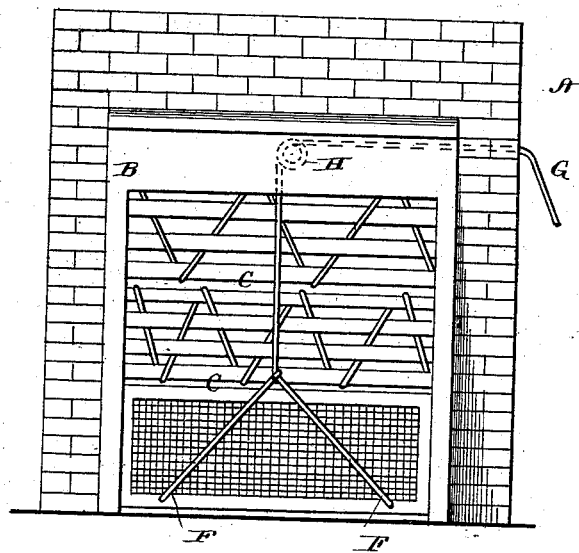
No. 265,174.

Patented Sept. 26, 1882.

*Fig. 1.*



*Fig. 2.*



*Witnesses,*  
*Edwin L. Yerrell.*  
*H. Aubrey Toulmin.*

*Inventors,*  
*S. S. Stedman and*  
*W. T. Barker*  
*By C. M. Alexander*  
*Atty.*

(No Model.)

2 Sheets—Sheet 2.

S. S. STEDMAN & W. T. BARKER.

GRATE FENDER.

No. 265,174.

Patented Sept. 26, 1882.

Fig. 3.

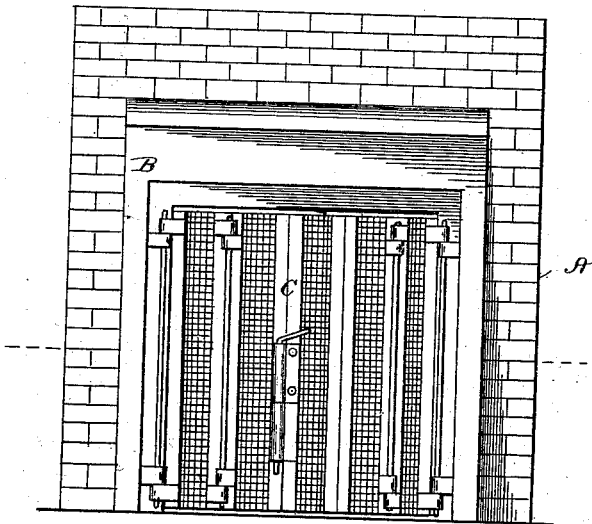


Fig. 4.

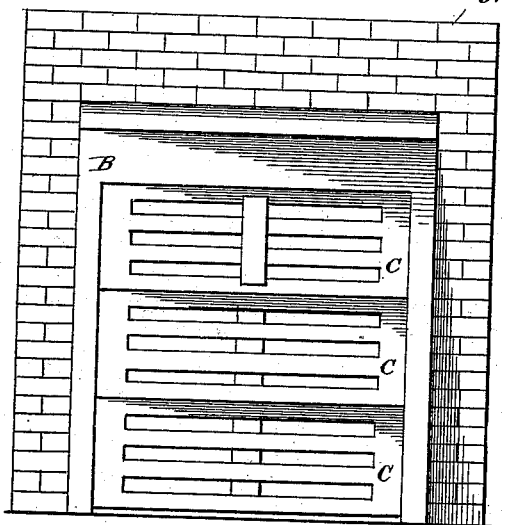


Fig. 5.

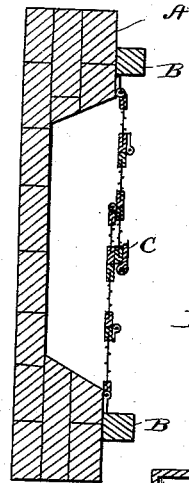


Fig. 7.

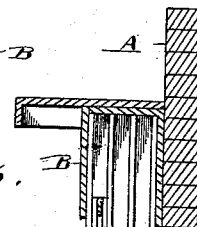
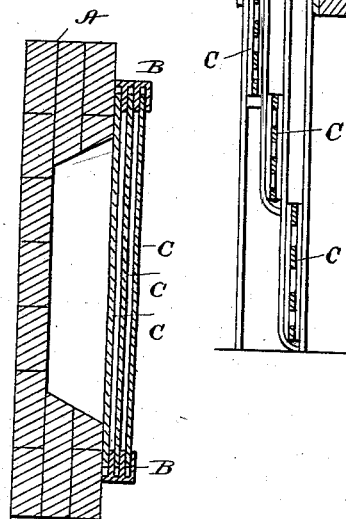


Fig. 6.



Witnesses.

Edwin L. Jewell.  
H. Aubrey Paulmin

Inventors.

S. S. Stedman, and  
W. T. Barker,  
By C. M. Alexander  
Attorney.

# UNITED STATES PATENT OFFICE.

STEPHEN S. STEDMAN AND WILLIAM T. BARKER, OF JORDAN'S STORE, GA.

## GRATE-FENDER.

SPECIFICATION forming part of Letters Patent No. 265,174, dated September 26, 1882.

Application filed April 28, 1882. (No model.)

*To all whom it may concern:*

Be it known that we, STEPHEN S. STEDMAN and WILLIAM T. BARKER, of Jordan's Store, in the county of Pike, and in the State of Georgia, have invented certain new and useful Improvements in Grate-Fenders; and we do hereby declare that the following is a full, clear, and exact description thereof, reference being had to the accompanying drawings, and to the letters of reference marked thereon; making a part of this specification.

This invention relates to certain improvements in the construction of fire-places; and it has for its objects to guard against accidents and regulate and control the draft, as more fully hereinafter specified. These objects we attain by the means and devices illustrated in the accompanying drawings, in which—

Figure 1 represents a front view of a fire-place embodying our invention; Figs. 2, 3, and 4, similar views, showing modifications of our invention; Figs. 5 and 6, horizontal sectional views of the same; and Fig. 7, a vertical section through the fire-place, showing the space in which the sliding shields are inclosed when drawn up.

The letter A indicates the walls of the fire-place, constructed of brick-work, masonry, or other suitable material, and B the mantel-piece, set in the fire-place in the usual manner.

The letter C indicates a detachable screen or fender, constructed of wire-gauze, lattice-work, or other similar material, and secured in such manner as to cover the entire front or any other portion of the fire-place, as may be desired.

As illustrated in Fig. 1, the mantel-piece at one side is provided with a vertical groove, N, in which one edge of the frame L of the screen sits, the opposite side being provided with a sliding bolt, D, adapted to enter a socket, E, on the opposite edge of the frame of the screen and hold the screen in place.

In the modifications illustrated in Figs. 2 and 4 a series of vertically-sliding screens are employed. In such modifications the mantel-piece at each side is provided with three vertical grooves, in which the screens slide, the upper part of the mantel-piece being made

hollow, so as to form a recess, into which the screens may be elevated and concealed when desired. As indicated in Fig. 2, the lower screen has attached to its lower edge the chains F, which are secured to a single chain, G, passing upward over a pulley, H, and out at one side of the mantel-piece, so as to serve as a means for elevating the screens and drawing them up into the space before mentioned.

In the modification shown in Figs. 3 and 5 the screen is formed in two parts, which are hinged to opposite sides of the mantel-piece, the parts being constructed of vertical hinged sections, so that they may be opened and closed to a greater or less extent, as may be desired, or folded up against the sides of the mantel-piece, so as to be out of the way.

In addition to the screen, the fire-place may be provided with an adjustable imperforate shield of sheet metal as a substitute for the gauze screen C, as seen in Fig. 2, or the slotted sliding screens, as seen in Fig. 4, which can be raised or lowered or otherwise adjusted in a similar manner to the screens, so as to regulate the draft or extinguish the fire entirely.

We are aware that adjustable fire-screens have been made and that fire-places have been constructed with grooves to facilitate the attachment or removal of fire-screens, and that fire-screens have been made in which is a door having numerous perforations and adapted to be secured on one side by lugs which project from the door and engage with recesses in the door-frame and on the other by a lock and key. We do not claim such constructions, broadly; but

What we do claim, and desire to secure by Letters Patent, is—

1. In combination with a fire-place having a vertical groove, N, on one side, the removable screen C, provided with a frame, L, adapted to fit into the said groove N on one side of the mantel-piece, and having on the other side of the frame a long inverted-L-shaped bolt, D, adapted to enter the long sockets E, and thus secure the frame and screen in place, substantially as shown and described.

2. The combination of the inverted-L-shaped bolt D, adapted to enter the long sockets E,

secured to one side of a fire-place, and the gauze screen C, secured to a frame, L, adapted to fill the entire opening in front of the fire-place, and to enter a vertical groove, N, on  
5 the otherside thereof, as shown and described, and for the purposes set forth.

In testimony whereof we affix our signatures,

in presence of two witnesses, this 22d day of April, 1882.

S. S. STEDMAN.  
W. T. BARKER.

Witnesses:

J. JOSEPH MCCARTHY,  
CHARLES D. DAVIS.