

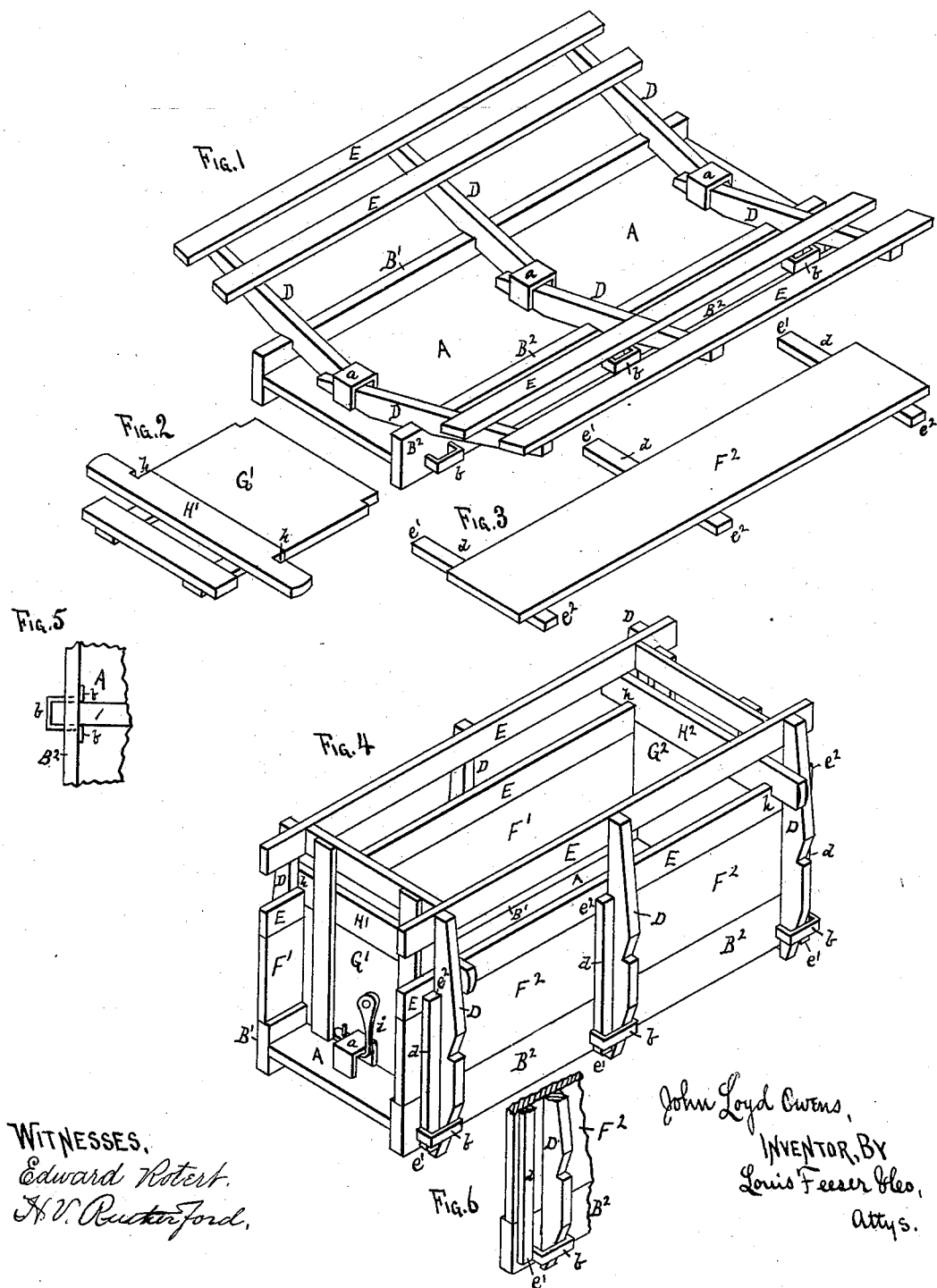
(No Model.)

J. L. OWENS.

COMBINED HAY AND STOCK RACK.

No. 265,979.

Patented Oct. 17, 1882.



WITNESSES.  
Edward Robert.  
H. V. Ruckerford.

John Lloyd Owens,  
INVENTOR, BY  
Louis Fessenden,  
Attys.

# UNITED STATES PATENT OFFICE.

JOHN LOYD OWENS, OF MINNEAPOLIS, MINNESOTA.

## COMBINED HAY AND STOCK RACK.

SPECIFICATION forming part of Letters Patent No. 265,979, dated October 17, 1882.

Application filed April 22, 1882. (No model.)

*To all whom it may concern:*

Be it known that I, JOHN LOYD OWENS, a citizen of the United States, and a resident of Minneapolis, in the county of Hennepin and State of Minnesota, have made certain new and useful Improvements in a Combined Hay and Stock Rack, of which the following is a specification.

This invention is an improvement on my patent of November 8, 1881, No. 249,392, (hay-racks;) and it consists in the construction and arrangement of parts, as hereinafter described and claimed, and as set forth in the accompanying drawings, in which—

Figure 1 is a perspective view, showing the rack arranged as a hay-rack. Fig. 2 is a perspective view of one of the end pieces detached, and Fig. 3 is a similar view of one of the side pieces detached, used in converting the hay-rack into a stock-rack. Fig. 4 is a perspective view of the device arranged as a stock-rack; Fig. 5, a detached detail view of the stake-staple; Fig. 6, a detached perspective view of a portion of one end, showing a slight variation in the manner of constructing the parts.

A is the floor or base, B' B<sup>2</sup> the sides, a the metal bands encircling the cross-timbers, D the bars with their lower ends stepped into said bands from opposite sides, and E the rails connecting said bars D, all these parts being constructed and arranged as in my patent above referred to, and forming, when set up, a hay-rack, as shown in Fig. 1. Upon the outside of the sides B' B<sup>2</sup>, at points opposite the cross-bars, staples or sockets b are secured by passing their ends through slots in the sides B' B<sup>2</sup>, upon the sides of the ends of the cross-bars, and bending the ends of the staples that project through the sides B' B<sup>2</sup> in opposite directions, as shown in Fig. 5, thereby firmly and easily securing them in place. Into these staples, outside the sides B' B<sup>2</sup>, the "toes" of the bars D are adapted to be stepped, as shown in Fig. 4, so that the bars and rails form sides or extensions to the sides B' B<sup>2</sup>. Before the frames are set in this position, however, the sides or boards F' F<sup>2</sup>, having cleats d across

their rear sides, are set upon the sides B' B<sup>2</sup>, with the lower projecting ends, e', of the cleats d setting into the staples b, alongside of the bars D, and the upper projecting ends, e<sup>2</sup>, of the same cleats outside the lower rails, E, by which means the boards are firmly held in place.

If desired, the lower ends, e', of the cleats d may be arranged to set outside of the staples b, as shown in Fig. 6, and one of the end cleats will be placed so as to come upon the opposite side of the bar D to prevent the boards moving endwise. End boards, G' G<sup>2</sup>, will then be inserted, as shown in Fig. 4, each board having a top rail, H' H<sup>2</sup>, with projecting ends, with notches h in their lower edges to fit over the top edge of the lower rails, E, to hold the top in place, the bottom edges being held at the same time by hooks i, fitting in beneath the end clamps, a, as shown. By this arrangement the hay-rack may be quickly and easily converted into a stock-rack, or vice versa.

The sockets b may be arranged to be pushed in out of the way when not in use, if desired.

What I claim as new is—

1. A wagon box or base consisting of a floor, A, and sides B' B<sup>2</sup>, having bands a in the center of said floor, and sockets b projecting from the outer surfaces of said sides, in combination with bars D, rails E, and boards F' F<sup>2</sup>, having cleats d, with projecting ends e' e<sup>2</sup>, substantially as and for the purpose set forth.

2. A wagon box or base consisting of the floor A and sides B' B<sup>2</sup>, having sockets b projecting from said sides, and bands a in the center of said floor, in combination with bars D, rails E, boards F' F<sup>2</sup>, having cleats d' d<sup>2</sup>, with projecting ends e' e<sup>2</sup>, and the end boards, G' G<sup>2</sup>, adapted to be attached to said rails E and floor A, substantially as set forth.

In testimony whereof I have hereunto set my hand in the presence of two subscribing witnesses.

JOHN LOYD OWENS.

Witnesses:

C. N. WOODWARD,  
LOUIS FEESER, Sr.