

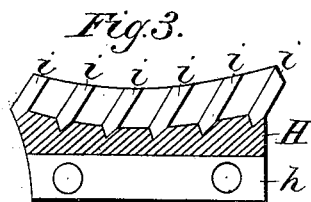
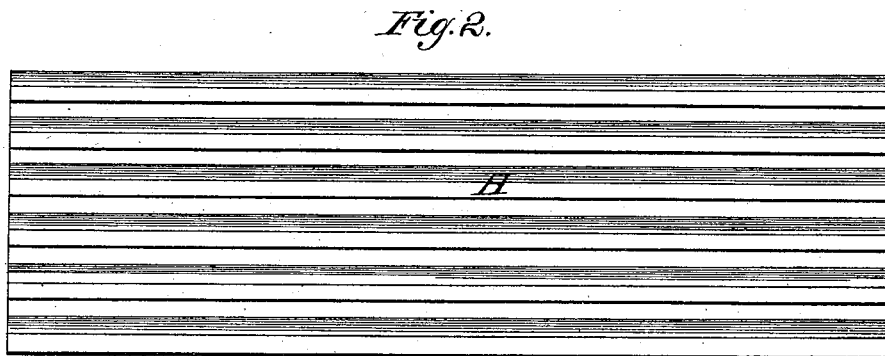
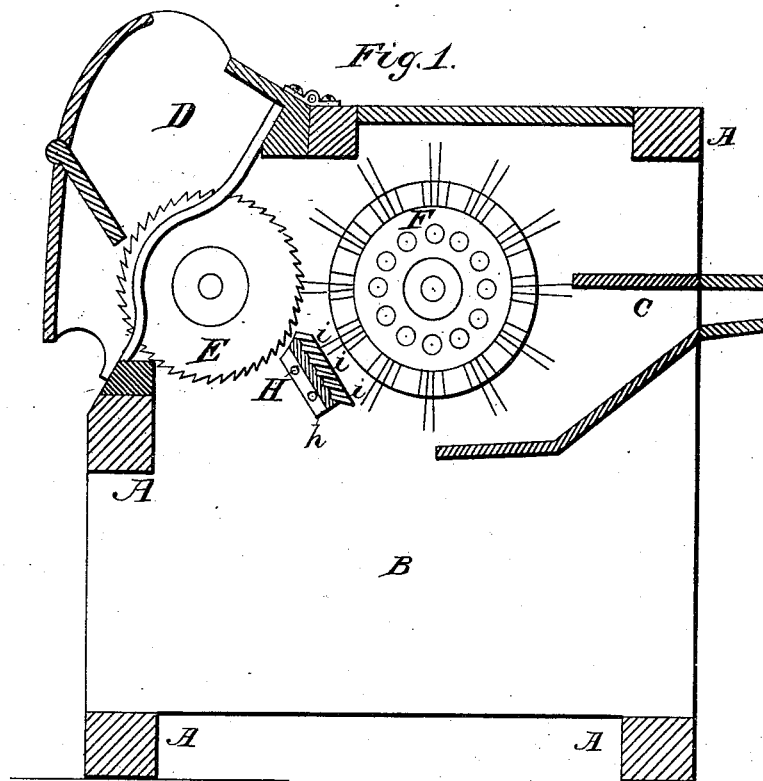
(No Model.)

F. H. LUMMUS.

COTTON GIN.

No. 266,376.

Patented Oct. 24, 1882.



Witnesses.

H. D. Donnelly
Geo. W. Perkins

Inventor.

Franklin H. Lummus
By Edmund Hunt for
Atty.

UNITED STATES PATENT OFFICE.

FRANKLIN H. LUMMUS, OF BROOKLYN, NEW YORK.

COTTON-GIN.

SPECIFICATION forming part of Letters Patent No. 266,376, dated October 24, 1882.

Application filed April 4, 1882. (No model.)

To all whom it may concern:

Be it known that I, FRANKLIN H. LUMMUS, a citizen of the United States, residing at Brooklyn, in the county of Kings and State of New York, have invented a new and useful Improvement in Cotton-Gins, of which the following is a specification.

My invention relates to that form of cotton-gin in which a series of ridges or blades is used, in combination with a saw and brush-cylinder, to whip and clean the flake; and my invention consists of a peculiar arrangement of the blades or ridges, whereby the sand, trash, &c., are free to drop into the mote-chamber of the gin.

In the drawings, Figure 1 is a vertical section of the entire machine with my invention applied thereto, and Figs. 2 and 3 are views of a modified form of the series of blades or ridges.

Similar letters refer to similar parts throughout the several views.

The letters A A represent the frame-work of a cotton-gin; B, the mote-chamber; C, the lint-flue; D, the hopper; E, the ginning-saws, and F the brush-cylinder. The above-named parts are all old and well known in the art, and I lay no claim to them or to their arrangement.

H represents a board or bed in which the whipping ridges or blades *i i* are secured. In the upper surface of this bed H, I cut grooves, which are adapted to receive the inner edges of the whipping-ridges and to hold such ridges in position. This whole structure is secured

to the frame-work of the gin by means of the brackets *h*, and I have obtained the best results when the whipping-bed is placed as near as possible to the point of contact of the ginning-saws and the brush-cylinder, for by this arrangement it is almost impossible for naps and curls to form in the flake of cotton during its passage from the saws to the whipping-bed, and an exceedingly fine staple is produced. The ridges or blades *i i* are mounted in the bed H at such an angle that when the bed is placed in position their outer edges are depressed from a horizontal plane, and this arrangement of the blades constitutes my invention, the special advantage of which is that all sand, trash, &c., are free to drop into the mote chamber of the gin.

In Figs. 2 and 3 I show a whipping-bed in which the edges of the blades are concentric to the periphery of the brush-cylinder instead of being tangential thereto, as in Fig. 1.

Having thus described my invention, what I desire to claim and secure by Letters Patent is—

A whipping-bed having longitudinal parallel ridges or blades, the outer edges of which are depressed from a horizontal plane, substantially as described.

FRANKLIN H. LUMMUS.

Witnesses:

EDWARD NICOLL,
EDWARD KENT, Jr.