

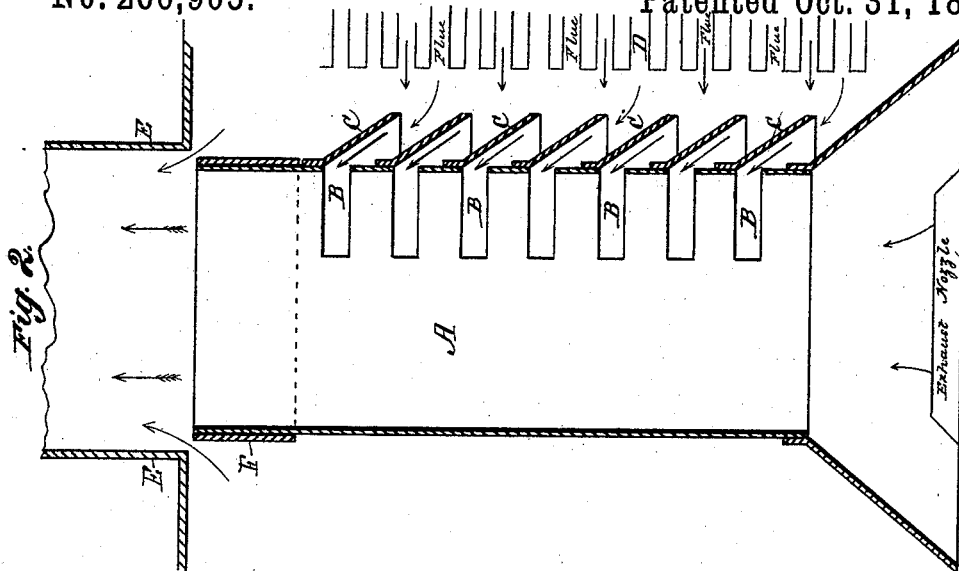
(No Model.)

A. J. SEAMAN.

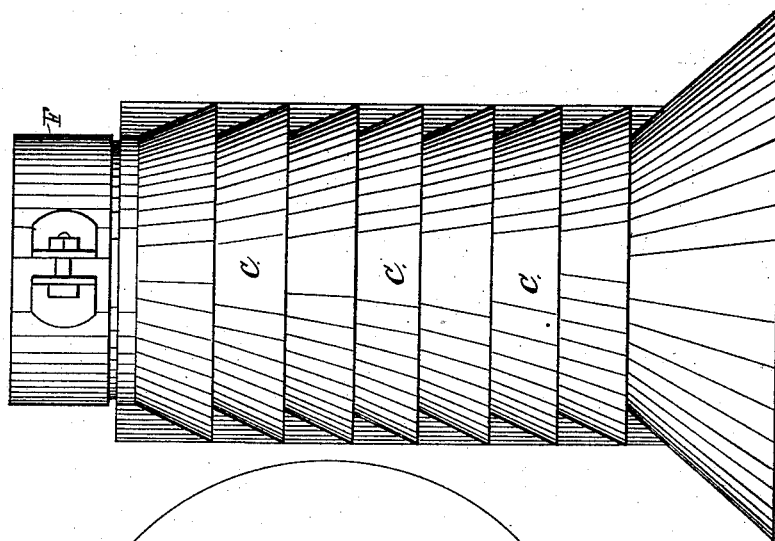
PETTICOAT PIPE FOR LOCOMOTIVE ENGINES.

No. 266,905.

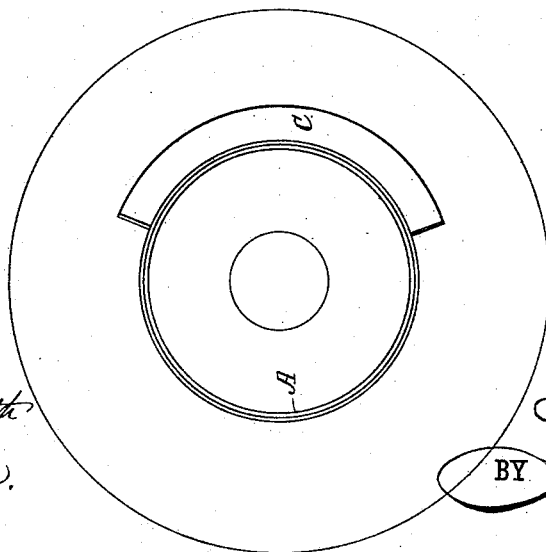
Patented Oct. 31, 1882.



*Fig. 1.*



*Fig. 3.*



WITNESSES:

*W. W. Hollingsworth*  
*A. G. Lyne.*

INVENTOR:

*A. J. Seaman*

BY

*Wm. T. L.*  
ATTORNEYS.

# UNITED STATES PATENT OFFICE.

ALBERT J. SEAMAN, OF STANFORD, KENTUCKY.

## PETTICOAT-PIPE FOR LOCOMOTIVE-ENGINES.

SPECIFICATION forming part of Letters Patent No. 266,905, dated October 31, 1882.

Application filed July 24, 1882. (No model.)

*To all whom it may concern:*

Be it known that I, ALBERT J. SEAMAN, of Stanford, in the county of Lincoln and State of Kentucky, have invented a new and useful  
5 Improvement in Petticoat-Pipes for Locomotive-Engines; of which the following is a full, clear, and exact description, reference being had to the annexed drawings, forming part of this specification.

10 This invention relates to an improvement in what is known as "petticoat" pipes for locomotive-engines; and the object of the invention is a construction by which a larger, exhaust-nozzle can be used, to the end that a  
15 larger quantity of steam may be generated with a less amount of fuel than ordinarily.

In the drawings, Figure 1 is an elevation of my improved petticoat-pipe. Fig. 2 is a central vertical section of the same, showing the  
20 relative position of the exhaust-nozzle, the flues, and the smoke-stack; and Fig. 3 is a plan view of the pipe.

A represents the pipe, having a series of openings, B, extending about two-fifths the  
25 distance around the same, and formed one above another at regular intervals. To the upper edge of each opening is secured a downward and outward flaring plate, C, which overlaps the opening immediately underneath it.  
30 These plates are to be either movable or sta-

tionary, as may be desired and are arranged opposite the flues D, in order to give a shorter way out, whereby a freer escape shall be provided, to the end that the draft shall be made stronger, and more steam thereby generated. 35

E is the smoke-stack, and F is an adjustable sleeve placed over the upper end of the pipe A, by the raising or lowering of which the draft can be regulated. The sleeve, as shown in the drawings, consists of a cut band  
40 having its ends provided with perforated flanges, which are secured together by a bolt and nut, and it is held to the pipe A by being clamped thereto by screwing up the nut.

As it is common to form openings in a petticoat-pipe for the escape of the smoke, I do  
45 not claim that feature, broadly.

Having thus described my invention, what I claim, and desire to secure by Letters Patent, is—

50 The combination, with the pipe A, having the series of openings B and plates C, of the sleeve F, formed of a cut band having its ends bolted together adjustably, as and for the purpose described.

ALBERT J. SEAMAN.

Witnesses:

HENRY T. HARRIS,  
J. P. BAILY.