

(No Model.)

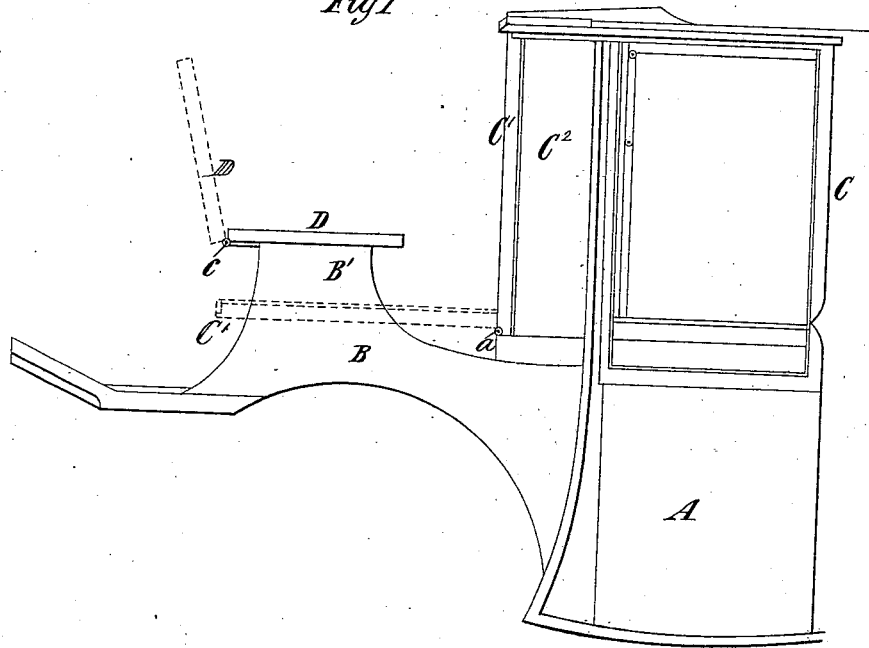
H. F. STAHLER.

COACH.

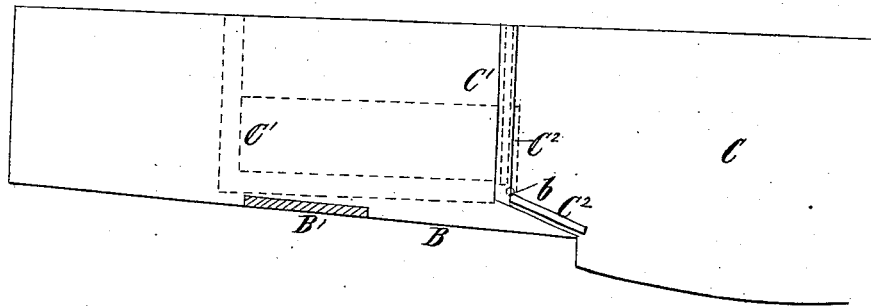
No. 267,376.

Patented Nov. 14, 1882.

*Fig 1*



*Fig 2.*



*Witnesses*  
*John H. Wagner*  
*Ed. L. Moran*

*Inventor*  
*Herman F. Stahmer*  
*by his Attorneys*  
*Rowan & Brown*

# UNITED STATES PATENT OFFICE.

HERMAN F. STAHLER, OF NEW YORK, N. Y.

## COACH.

SPECIFICATION forming part of Letters Patent No. 267,376, dated November 14, 1882.

Application filed March 13, 1882. (No model.)

*To all whom it may concern:*

Be it known that I, HERMAN F. STAHLER, of the city of New York, in the county and State of New York, have invented a new and useful Improvement in Coaches, of which the following is a specification.

The object of my invention is to afford provision for opening and closing the entire fronts of coaches without the necessity of adjusting or moving the tops in any way.

To this end the invention consists in a coach-body comprising a top and a front, so combined that the top is supported independently of the front, and the front is hinged at its lower edge, so that it may be swung forward and downward upon the boot without affecting the top or necessitating any manipulation of the top.

The invention also consists in the combination, with the above, of side portions of the coach-body, hinged to the side edges of the front, so that they may be folded inward on the inner side of the front and swung downward with the front upon the boot.

In the accompanying drawings, Figure 1 represents a side view of a portion of a coach embodying my invention, and Fig. 2 represents a sectional plan thereof.

Similar letters of reference designate corresponding parts in both the figures.

A designates the forward portion of the coach-body, and B designates the boot, which projects forwardly therefrom and is constructed in the usual way.

C designates the upper part of the body or the top thereof, and C' designates the front, which is hinged at its lower edge, as shown at *a*, in any suitable manner, so that it may be swung forward and downward upon the boot B, as shown in dotted lines. When the front C' is raised it may be detachably connected at its upper edge with the top C by any suitable catches, (not here shown;) but the top is supported entirely independently of the front,

and the latter may be swung down without manipulating the top in any way. I also hinge the two side portions, C<sup>2</sup>, to the side edges of the front C', as shown at *b* in Fig. 2, so that they may fold inward on the inner side of the front, as shown in dotted lines in Fig. 2, and be then swung forward and downward with the front.

To enable the front C' to be swung forward so that it will lie under the seat D, I may make the seat removable, or hinge it at its front edge, as shown at *c*, in which case the seat is swung upward and forward to enable the front to be swung forward and downward.

By my invention I enable the whole front of a coach to be readily opened without the necessity of manipulating the top and without dividing the top, as would be necessary if a portion thereof were permanently connected with the front.

What I claim as my invention, and desire to secure by Letters Patent, is—

1. In a coach-body, a top and a front so combined that the top is supported independently of the front, and the front is hinged at its lower edge, so that it may be swung forward and downward upon the boot without affecting the top or necessitating any manipulation of the top, substantially as described.

2. In a coach-body, a top and a front so combined that the top is supported independently of the front, and the front is hinged at its lower edge, so that it may be swung forward and downward upon the boot without affecting the top or necessitating any manipulation of the top, and side portions hinged to the side edges of the front and adapted to be folded inward on the inner side of the front and swung downward with it, substantially as described.

HERMAN F. STAHLER.

Witnesses:

FREDK. HAYNES,  
ED. MORAN.