

(No Model.)

R. B. PERKINS.

HANGING LAMP.

No. 301,265.

Patented July 1, 1884.

Fig. 1

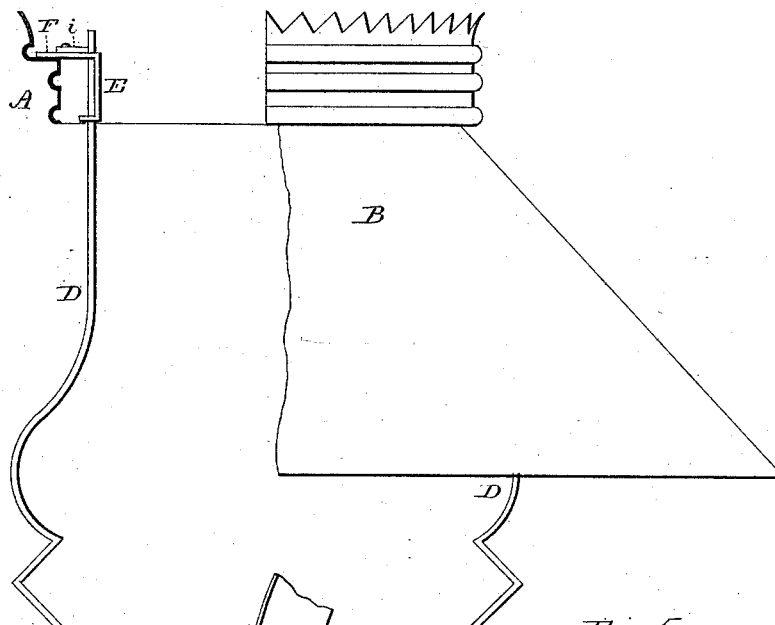


Fig. 2

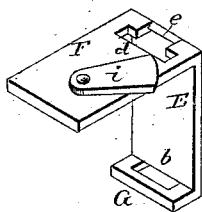


Fig. 3

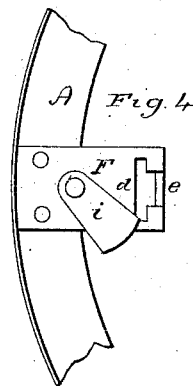
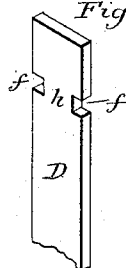


Fig. 5

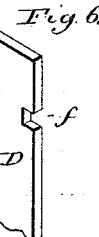
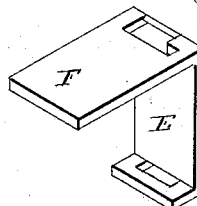


Fig. 7

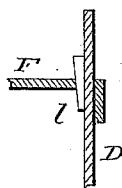


Fig. 8

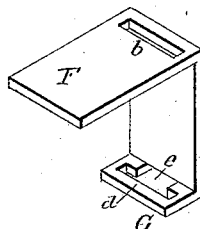
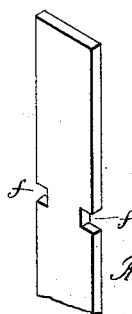


Fig. 9



Witnesses.

J. H. Shumway.  
J. C. Earle.

Russell B. Perkins,  
Inventor.

By Atty.  
J. C. Earle.

# UNITED STATES PATENT OFFICE.

RUSSELL B. PERKINS, OF MERIDEN, CONNECTICUT, ASSIGNOR TO EDWARD MILLER & CO., OF SAME PLACE.

## HANGING LAMP.

SPECIFICATION forming part of Letters Patent No. 301,265, dated July 1, 1884.

Application filed January 14, 1884. (No model.)

*To all whom it may concern:*

Be it known that I, RUSSELL B. PERKINS, of Meriden, in the county of New Haven and State of Connecticut, have invented a new Improvement in Hanging Lamps; and I do hereby declare the following, when taken in connection with accompanying drawings and the letters of reference marked thereon, to be a full, clear, and exact description of the same, and which said drawings constitute part of this specification, and represent, in—

Figure 1, a sectional side view; Fig. 2, a perspective view of the frame-support detached from the shade-ring; Fig. 3, one end of the frame detached; Fig. 4, a top view of the shade-ring and one of the supports; Figs. 5, 6, 7, 8, and 9, modifications.

This invention relates to an improvement in that class of lamp-fixtures designed to be suspended from the ceiling, commonly called "hanging lamps," and particularly to that class in which the frame or harp and shade-ring are made from sheet metal. In this class of hanging lamps the shade-ring is of larger diameter than the opening in the top of the shade, and the harp is also broader than that opening; hence the shade cannot be attached or removed without separating the harp from the ring. The separation of the shade-ring and harp or frame is also necessary in order to reduce the bulk for transportation.

The object of my invention is a simple device for securing the frame to the shade-ring, whereby it may be readily connected or detached as occasion requires, and so that, the suspending devices being attached to the shade-ring, the frame may be disconnected from the shade-ring without detaching the shade-ring from its suspending devices; and my invention consists in the detachable connection between the shade-ring and the harp, more fully hereinafter described.

A represents the shade-ring, within which the shade B is hung by its neck, fixed by set-screws or otherwise, a flange, C, projecting from the ring to form a crowning ornament; D D, the two arms of the frame, upon which the lamp-fount is supported in the usual manner. The supports E for the frame are attached to the shade-ring diametrically opposite each other. One of these supports is

shown detached in Fig. 2. It consists of a vertical body, the upper end of which extends outward to form an arm, F, and by which it is secured to the shade-ring, as seen in Fig. 1. Its lower end, G, is also turned outward parallel with the arm F. In the lower arm a slot, *b*, is cut, corresponding in shape to one arm D of the frame, and so that the arm may readily pass through that slot. The upper arm, F, is also constructed with a like slot, *d*, parallel with the slot *b*, and from this upper slot, *d*, a notch, *e*, is cut. The arms of the frame, as before stated, are at their upper end of a width corresponding to the slots *b* and *d*. Near the extreme upper end a transverse notch, *f*, is cut in each edge of the frame, reducing the width between the notches, as at *h*, to correspond to the notch *e*, and so that when the upper end of the frame is passed through the slot *b*, thence up through the slot *d*, and the notches *f f* brought into the plane of the slot *d*, that end of the frame may pass from the slot *d* to bring the solid part *h* into the notch *e*, the frame overhanging the arm each side the notch *e*, as seen in Fig. 4, and is thereby supported. To lock the frame when thus set in the notch *e*, a turn-button, *i*, on the arm F, or an equivalent therefor, is turned against the frame, as indicated in broken lines, Fig. 4, in which condition the frame is firmly secured to the shade-ring, and from which it may be removed by simply moving the turn-button away from its position against the arm, and as indicated in Fig. 4, and then throwing the arm from the notch *e* into the slot *d*. The two slots *b* and *d*, taking a bearing upon the frame at points distant from each other, give a firm support to the frame.

While I prefer the notch *e* in the center of the slot *d*, and so as to form a T-shaped slot, it may be made at one end of the slot, as seen in Fig. 5. In that case the frame will have the notch *f* in one edge only, as seen in Fig. 6.

Instead of making the T-shaped slot in the upper arm, F, it may be made in the lower arm, G, as seen in Fig. 8, and the slot *b* made in the upper arm. In that case the notches *f* will be cut at a correspondingly greater distance from the upper end, as seen in Fig. 9.

Instead of the turn-button *i* to secure the frame when thrown into the notch *e*, other de-

vices may be introduced for this purpose—say a wedge or key, *l*, as seen in Fig. 7. I therefore do not wish to limit my invention to the particular device for locking the frame when engaged with the supports.

While a locking device is desirable to secure the frame in the notch *e*, the elasticity of the sides of the frame may be sufficient to hold them in their respective notches *e*, in which case the locking mechanism may be dispensed with.

In my invention shown and described in Patent No. 284,889, the devices for attaching the harp to the ring accomplish, to a certain extent, the objects of this present invention; but in that patent the connection between the arms and the ring is made by a single hook-like arrangement, whereas in this present invention engagement is made with the harp at two points—one above the other—whereby a strong brace-like connection is made retaining the same advantages of detachability; and, further, in this present invention the securing device is entirely within the ring and attached to it, so that the fastening or attaching devices do not appear upon the outside.

It will be understood from the foregoing that I do not claim, broadly, a detachable frame, nor any of the parts, devices, or constructions shown in my previous patent.

I claim—

1. In a hanging-lamp fixture consisting of the shade-ring and support for the lamp-fount, the shade-ring provided with parallel slots *b* *d*, one above the other, and in one of which is a notch, *e*, the upper end of the arms of the frame constructed to pass through said slots, and notched or reduced to correspond with the notch in one of said slots, whereby the said frame will engage the said notch in the slot, substantially as described.

2. In a hanging-lamp fixture consisting of the shade-ring and support for the lamp-fount, the said ring provided with slots *b* *d*, parallel to each other, and one above the other, and in positions on the ring corresponding to the arms of the frame, one of said slots constructed with a notch, *e*, the upper ends of the frame constructed to pass through said slots, and also with a notch or notches, *f*, so as to permit the frame at said notches *f* to pass into the notch *e* in the slot, and a locking mechanism, substantially such as described, to secure the frame when in said notch *e*, substantially as specified.

RUSSELL B. PERKINS.

Witnesses:

BENJ. C. KENNEDY,  
EDWARD MILLER, Jr.