

(No Model.)

C. J. ASIMUS.

HOT BED SASH.

No. 301,658.

Patented July 8, 1884.

Fig. 1.

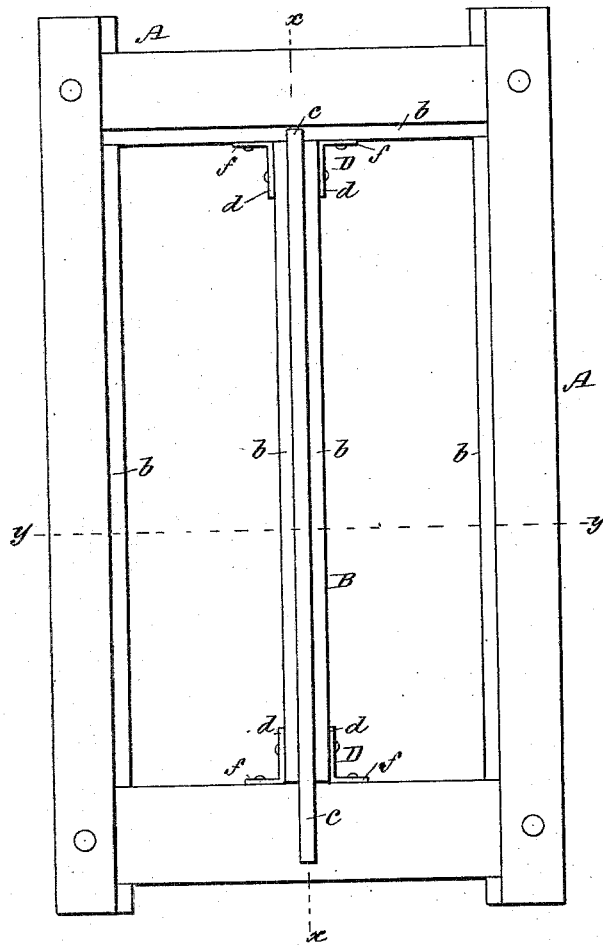


Fig. 2.

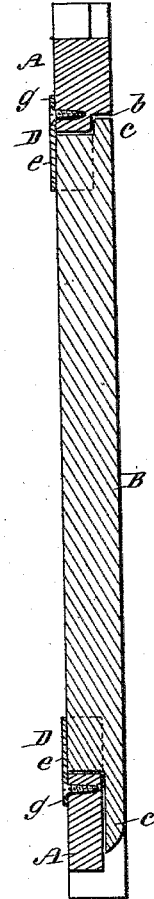


Fig. 3.

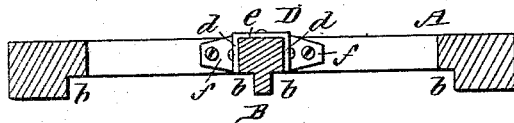


Fig. 4.

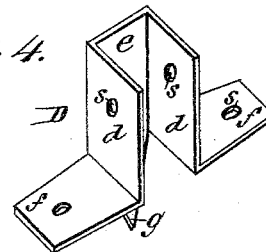
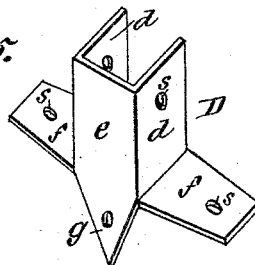


Fig. 5.



WITNESSES:

Theo. G. Hoston
L. Sedgwick

INVENTOR:

C. J. Asimus

BY

Munn & Co

ATTORNEYS.

UNITED STATES PATENT OFFICE.

CHARLES J. ASIMUS, OF GUTTENBURG, NEW JERSEY.

HOT-BED SASH.

SPECIFICATION forming part of Letters Patent No. 301,658, dated July 8, 1884.

Application filed December 3, 1883. (No model.)

To all whom it may concern:

Be it known that I, CHARLES J. ASIMUS, of Guttenburg, in the county of Hudson and State of New Jersey, have invented a new and useful Improvement in Glazed Frames for Hot-Houses, Hot-Beds, and other like Structures, of which the following is a full, clear, and exact description.

This invention more especially relates to the glazed frames of hot-beds or hot-houses; and it consists in a novel construction of the mullions or strips which divide the contiguous glasses within the frame, and in the means for supporting and securing the same, whereby in case of the rotting or breaking of said mullions or strips they can be readily removed and replaced without disturbing the frame, and whereby, when in position, they will be securely held there.

Reference is to be had to the accompanying drawings, forming part of this specification, in which similar letters of reference indicate corresponding parts in all the figures.

Figure 1 represents an exterior or top view of a glass or sash holding hot-bed or hot-house frame having my invention applied, and Figs. 2 and 3 longitudinal and transverse sections of the same on the lines *x x* and *y y* in Fig. 1. Fig. 4 is a perspective view, as seen from the top or front, of a metallic shoe used to support each mullion or dividing-strip at either end; and Fig. 5, a further perspective view of the same as seen from its under side or rear.

A is the frame or side and end pieces thereof, and which, in conjunction with any number of mullions or dividing-strips B, interposed between the sides of the frame, serve to carry and hold the glasses or glazed sashes. In the drawings only one of such mullions or dividing-strips is shown; but of course there may be any number of them arranged at suitable distances apart, and which, as well as the side pieces of the main frame, and one at least of its end pieces, are rabbeted, as at *b*, as usual, for the glasses, or sashes carrying the glasses, to fit within. Each of these mullions or dividing-strips B, instead of being permanently built in the frame, is fitted separately and removably therein, and is or may be supported in part by end extensions, *c*, of its raised portion or rib arranged to overlap the end pieces

of the main frame or rabbeted portions thereof; but such lips or extensions are not so much for the support of the strip as to give it a finished appearance, and the same are not secured to the main frame; nor, or at least directly so, are said strips or mullions at any portion of them, and their body parts are of such length as to fit loosely but snugly at their ends down within the end pieces of the frame. Thus said mullions or strips B are totally independent of the frame A, and are not directly secured by fastenings thereto, but are mainly supported and spaced at their proper distances apart or from the side pieces of the frame by the end portions of their bodies fitting down within independent metallic shoes or sockets D, each of which is composed of sides *d d*, a bottom, *e*, side ears, *f f*, and a bottom ear, *g*. The sides *d d* and bottom *e* serve to receive and hold the opposite end body portions of the mullions or strips, while the ears *f f* and *g* provide for securing the shoes or sockets D, by nails or screws, to both the inner marginal portions of the end pieces and to their under sides as well, thus giving a firm but easy attachment of the shoes D to the main frame. The mullions or strips B are simply dropped at their ends to their places within these metallic shoes D, and may be secured therein by screws or nails passing through holes *s* in the sides *d d*. Whenever a mullion or dividing-strip B is rotted or broken, which, when made of wood, it is very apt to be, the same may be readily removed without disturbing the main frame, and be replaced when repaired, or another be substituted for it, by simply drawing the side screws or nails which hold the impaired or broken mullion to its place in the shoes, and subsequently fastening by like nails or screws the replaced or substituted mullion or dividing-strip B, the shoes D always remaining in position to receive the strips.

Having thus described my invention, what I claim as new, and desire to secure by Letters Patent, is—

1. In glazed frames for hot-beds, hot-houses, and other like structures, the combination of the main frame A, one or more detachable mullions or dividing-strips, B, fitted loosely to their places within said frame, and metallic shoes secured to said frame and constructed

to receive the opposite end portions of the bodies of the mullions down within them, substantially as and for the purposes specified.

2. In glazed frames for hot-beds, hot-houses, 5 and other like structures, the combination, with the frame A and one or more detachable mullions or dividing-strips, B, fitted loosely to their places within said frame and constructed with overlapping extensions *c*, of the shoes 10 D, secured to the frame and constructed to receive the mullions down within them, for the purpose of aiding in supporting the detachable mullions and of holding them to their places, essentially as described.

3. The metallic shoes or sockets D, con- 15 structed with sides *d d*, a bottom, *e*, side ears, *f f*, and a bottom ear, *g*, in combination with the frame A, to which said shoes are secured by said ears, as described, and one or more detachable mullions or dividing-strips, B, con- 20 structed to enter down within said shoes, substantially as specified, and for the purposes herein set forth.

CHARLES J. ASIMUS.

Witnesses:

JACOB SCHALK,

ALFRED LURCOTT.