

(No Model.)

J. LANE.

STOVE BACK.

No. 302,345.

Fig. 1 Patented July 22, 1884.

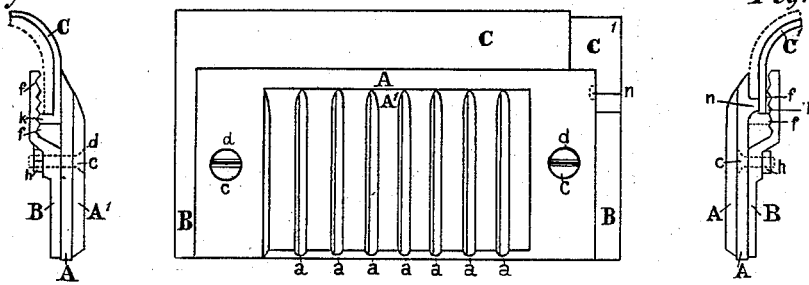


Fig. 2

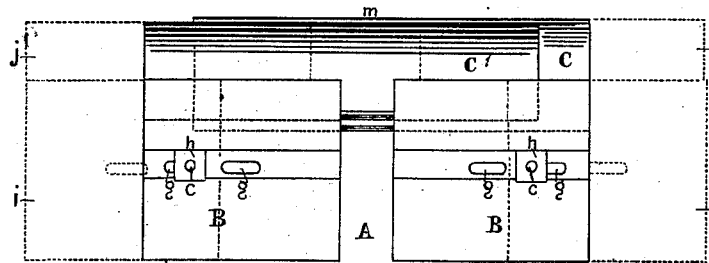


Fig. 3

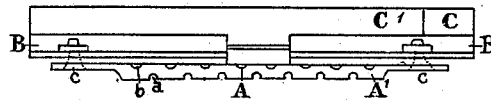


Fig. 4

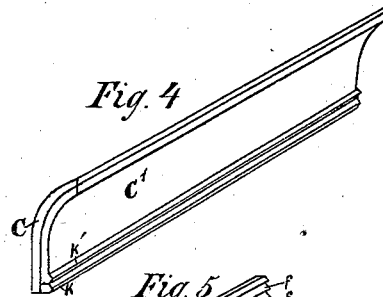
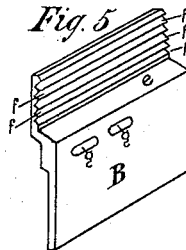


Fig. 5



WITNESSES:

Alfred Berobach
Frank R. Hesthiss

INVENTOR

John Lane

UNITED STATES PATENT OFFICE.

JOHN LANE, OF HYDE PARK, ILLINOIS, ASSIGNOR TO GEORGE T. WILLIAMSON, OF SAME PLACE.

STOVE-BACK.

SPECIFICATION forming part of Letters Patent No. 302,345, dated July 22, 1884.

Application filed September 22, 1883. (No model.)

To all whom it may concern:

Be it known that I, JOHN LANE, of Hyde Park, in the county of Cook and State of Illinois, have invented a new and useful Improvement in Stove-Backs, which improvement is fully set forth in the following specification.

My invention relates to what may be called a "two-high-section stove-back"—i. e., one section above another throughout its length, in which the arch-section is made separate and above the back proper or main section, and both sections made in parts. It is well known that such stove-backs, made in sections, and the sections in parts, have been subject to the trouble of some one or more parts getting out of place, and the back thereby becoming loose-jointed, rickety, and tumble-down, caused by the contraction and expansion of the back under heat and cold that it is subject to; and the object of my invention is to so construct a stove-back in sections and the sections in parts in such a manner as to avoid such troubles.

The invention consists in certain improvements, which will first be described in the specification and afterward pointed out in the claim.

Referring to the drawings, like letters refer to like parts in all the figures, in which—

Figure 1 is a face or front view of my improved stove-back. Fig. 2 is a rear view of same. Fig. 3 is a bottom edge view, and Fig. 4 is a perspective view, of the upper section or arch-plates, showing how they are provided with a tongue along their bottom edge and how telescoped, one plate within the other. Fig. 5 is a perspective view of one of the end wings or back plates. Figs. 6 and 7 are end views of same shown in Fig. 1, by which is seen that the grooves in the back plate are in the rear part of the stove-back and protected from great heat by the plates in front.

A represents the central plate, provided with a corrugated face and plain flat ends and top, as shown, and as the central plate receives the brunt of heat and is most subject to warp and twist by heat, it is made essentially plain and flat, without grooves, tongues, or other holding devices, save a bolt-hole, *d*, at each end, as shown.

B represents the back plates or end wings,

constructed with an offset shoulder, *e*, by which the upper part of the said plate is set back behind the top plates, with slots *g*, by which the said back plate may be adjustably attached to the central plate, and grooves *f*, which preferably extend the length of the said plate for seating the tongue of the top plates, all of which will be fully understood by the drawings. The said central plate, A, with two said back plates or end wings, B, constitute the lower section of my improved stove-back, and the upper section of the said stove-back consists of the two arched top plates, C and C', as shown in the drawings.

C represents the outer top plate, constructed of thin plate, with its top edge arching rearwardly for the purpose of abutting on the stove-casting, and the bottom edge is provided with a tongue, *k*, projecting rearward and extending the entire length of the said top plate. The said tongue *k* is seated in one of the grooves *f* in the back plate, and may be adjusted up or down to other grooves, by which the said top plate is made adjustable vertically to fit stoves of variable heights. In length the said top plate is about equal with the center plate, A, as shown in the drawings.

C' represents the inner top plate, which is constructed in the same manner as the outer top plate, C, with its top edge arched, and its bottom edge provided with the tongue *k'*, and the description thereof will suffice for this. The said two top plates C and C' are made telescopic, one within the other. The said plate C' is adapted to fit and slide inside of the said plate C, the arched top edge of the plate C covering the arched top edge of the plate C', and the tongue *k* of the plate C extending and overlapping the bottom edge and tongue *k'* of the plate C'. As it were, the one is boxed within the other, by which the two said plates C and C' are not liable to get separated or out of place or twist and warp under heat. The said tongue *k* on the inner top plate, C', is seated in a groove, *f*, just above the groove in which the tongue of the outer plate, C, is seated, and the two said plates may be adjusted vertically thereon without changing their relative position with each other, and the two said top plates, C and C', may be adjusted laterally by

being drawn apart to fit stoves of different widths, as will be understood by the drawings.

The operation of my improved stove-back is simple and will be understood by the drawings. 5 The five parts are assembled into their position, the two bolts *c* inserted, and the nuts *h* screwed up tight, by which all the parts are held in position, and by loosening the said nuts the two top plates may be adjusted both 10 vertically and laterally, and the back plates or end wings adjusted laterally to fit any sized stove, and the said nuts, when again tightened, will hold the parts rigidly in position.

The central plate may warp, twist, and burn out, and be changed for a new one, while the 15 back plates or end wings and top plates remain good, perfect, and in correct position, and by which the said stove-back is not liable to get rickety or tumble down.

20 I am aware that it is not new to construct a stove-back of separate pieces or sections adjustable to fit stoves of different sizes, constructed as shown in Patents No. 237,450, issued February 8, 1881, and No. 221,513, issued 25 November 11, 1879. Therefore I do not broadly claim such, my improvements having the

advantage of being more substantial and durable by reason of the peculiar and improved construction of the said top plates and back plates, and the locking and tying in the rear, 30 which said locking or tying is covered and protected from excessive heat by the central plate in front, as shown.

I claim—

In a stove-back, the combination of a cen- 35 tral plate and two back plates or end wings, the said back plates provided with the offset shoulders, the slots, and the grooves, with the two top plates provided with arched upper edges, and their bottom edges provided 40 with the tongues projecting rearward and extending throughout their length, the tongue of the outer plate overlapping the bottom edge and tongue of the inner plate, and the inner plate telescopic within the outer plate, 45 and the bolt *c*, with nut *h*, substantially as and for the purpose set forth.

JOHN LANE.

Witnesses:

ERNEST J. LANE,

JOSEPH N. BARKER.