

(No Model.)

J. R. SUTLIFF.

DROP HANDLE.

No. 302,526.

Patented July 22, 1884.

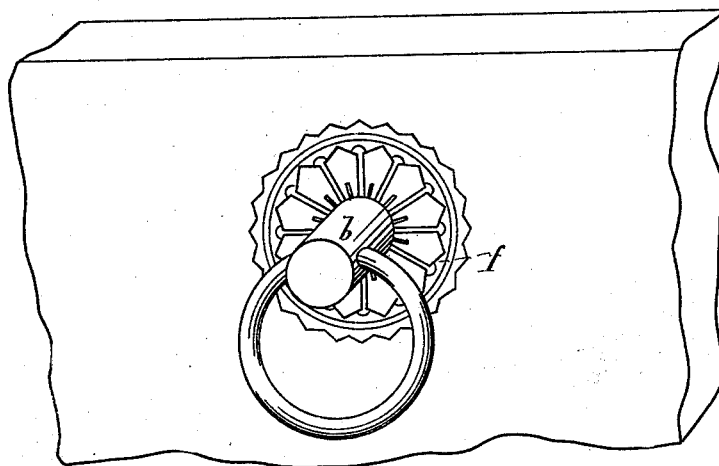


Fig. 1.

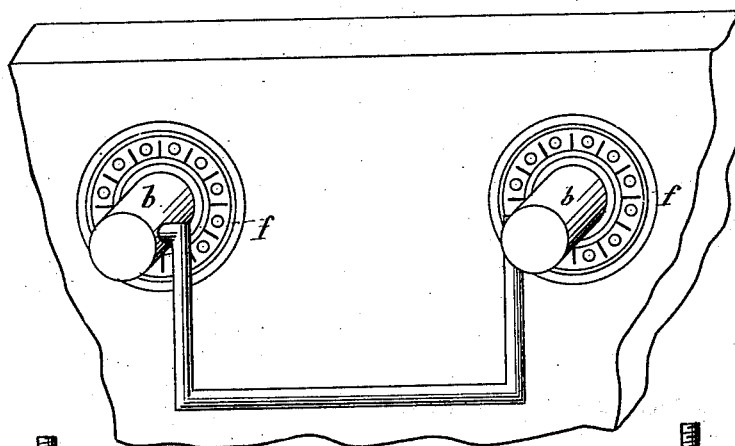


Fig. 2.

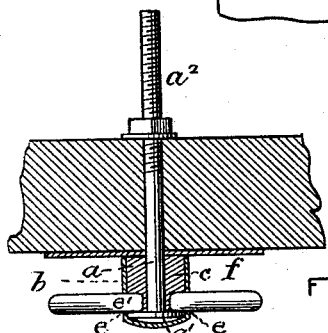


Fig. 3.

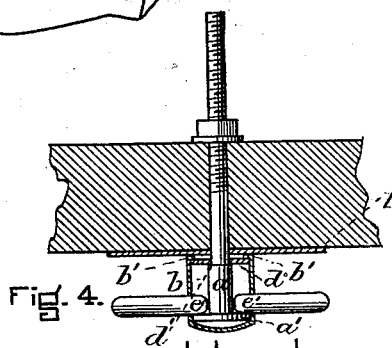


Fig. 4.

WITNESSES.

J. M. Dolan  
Fred. B. Dolan

INVENTOR.

James R. Sutliff  
by his atty  
Clark & Raymond

# UNITED STATES PATENT OFFICE.

JAMES R. SUTLIFF, OF MERIDEN, CONNECTICUT, ASSIGNOR TO FOSTER,  
MERRIAM & COMPANY, OF SAME PLACE.

## DROP-HANDLE.

SPECIFICATION forming part of Letters Patent No. 302,526, dated July 22, 1884.

Application filed April 9, 1884. (No model.)

*To all whom it may concern:*

Be it known that I, JAMES R. SUTLIFF, of Meriden, in the county of New Haven and State of Connecticut, a citizen of the United States, have invented a new and useful Improvement in Drop-Handles, of which the following is a full, clear, and exact description, reference being had to the accompanying drawings, forming a part of this specification, in explaining its nature, in which—

Figure 1 is a view representing my invention embodied in a ring-pull. Fig. 2 is a view showing my invention applied to a bail-handle; and Figs. 3 and 4 are horizontal sections illustrating the construction.

The object of the invention is to provide a cheap, strong, and ornamental construction for the class of knobs or handles known as "drop-handles," "bail-pulls," "ring-pulls," &c.; and it consists of the bolt *a*, having a head, *a'*, which preferably is circular and rounded, and the screw-thread *a''* and cap *b*, made of sheet metal struck up or otherwise formed to shape, and adapted to inclose or cover the head *a* and a part of the shank of the bolt, and to be fastened thereto either by means of a core or plug of wood, papier-maché, wood pulp, or other plastic material, as represented in Fig. 3, or by means of a metal flange or washer, *d*, which fits immediately below the shoulder *d* on the bolt, and against which, preferably, it is forced with some degree of pressure, and upon the outer surface of which the edge *b'* of the cap is turned or folded, as represented in Fig. 4. The cap has the holes formed therein immediately adjacent to the under surface of the head of the bolt, and when the handle is a split ring the ends *e'* of the ring are inserted within these holes, so that they shall project within the line of the head of the bolt, so that the head of the bolt and not the cap shall take the strain of the drawing or pulling action in opening a door or drawer. When a bail-pull is used, there generally is but one hole formed in the cap for the reception of one end of the bail, and this end of the bail should project sufficiently far to come within the line with the head of the bolt.

A bail-handle is different from a ring-pull, in that the bail is supported by two capped bolts instead of by one; and a drop-handle

may be either supported by one or by two capped bolts.

I generally use in connection with the cap the rosette or ornamental plate *f*, through which the bolt extends, and against which the end of the cap comes in contact. It will be observed that by this construction all the force or pressure exerted in opening a door or drawer is taken up or received by the head of the bolt; that there is no strain or pressure brought to bear on the cap, and that the cap can therefore be made of very light metal and of an ornamental character, as its office is simply to cover the head of the bolt and form an ornamental end thereto, and to hold the ring or handle thereon, without, however, receiving any of the strain or force employed when the handle is used. It will also be seen that it is necessary to support this cap upon the bolt in such a manner that the bolt cannot be drawn out from the cap toward the drawer or door in the act of fastening in place by the nut, and this would be the result if it were not either for the plug or core or for the shoulder and washer, and I consider that the shoulder and washer are the equivalent for the bushing or core for the purpose of accomplishing this result.

Having thus fully described my invention, I claim and desire to secure by Letters Patent of the United States—

1. In a drop-handle or pull for drawers, &c., the combination of the bolt *a*, having the head *a'* and screw-thread *a''*, the metal cap *b*, covering the head of the bolt, and means for holding the head of the bolt within the cap and for preventing it from being drawn therefrom, and a handle, one or both ends of which penetrate the cap and bear upon the inner surface of the bolt-head *a'*, all substantially as and for the purposes described.

2. The combination of the cap *b*, the bolt *a*, having the head *a'*, the shoulder *e'*, and screw-thread *a''*, the washer *d*, and the cap *e*, having its edge *b'* turned and folded upon the washer, and a handle, the end of which engages with the inner surface of the head of the bolt, all substantially as and for the purposes described.

Witnesses: JAMES R. SUTLIFF.  
GEO. C. MERRIAM,  
JOHN Q. THAYER.