

(No Model.)

J. MAXWELL.

BURIAL CASKET.

No. 302,753.

Patented July 29, 1884.

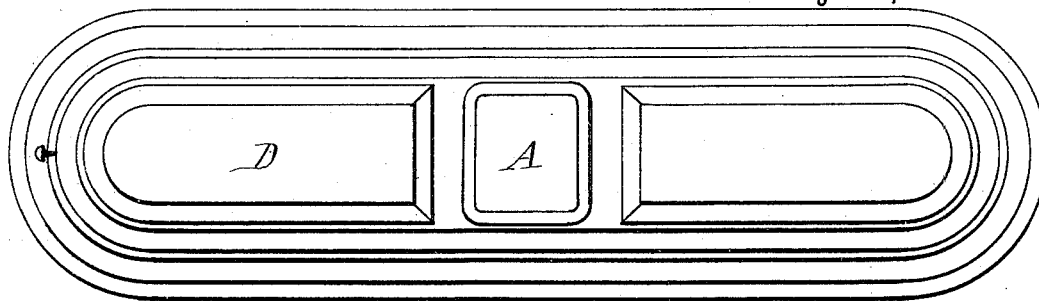


FIG 1-

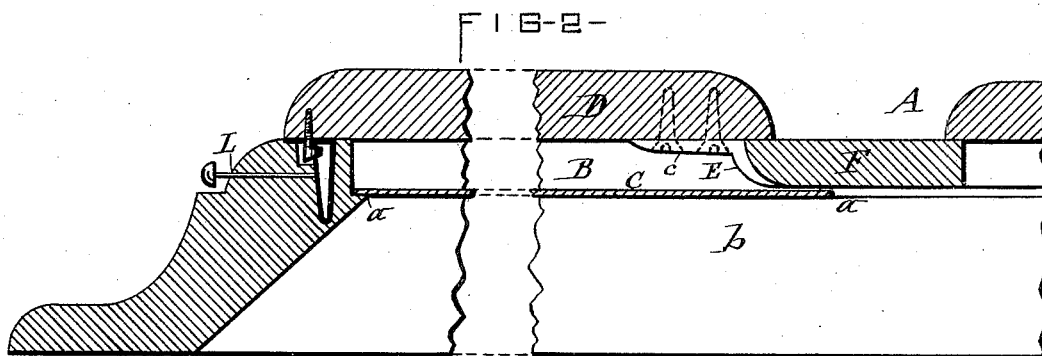


FIG 2-

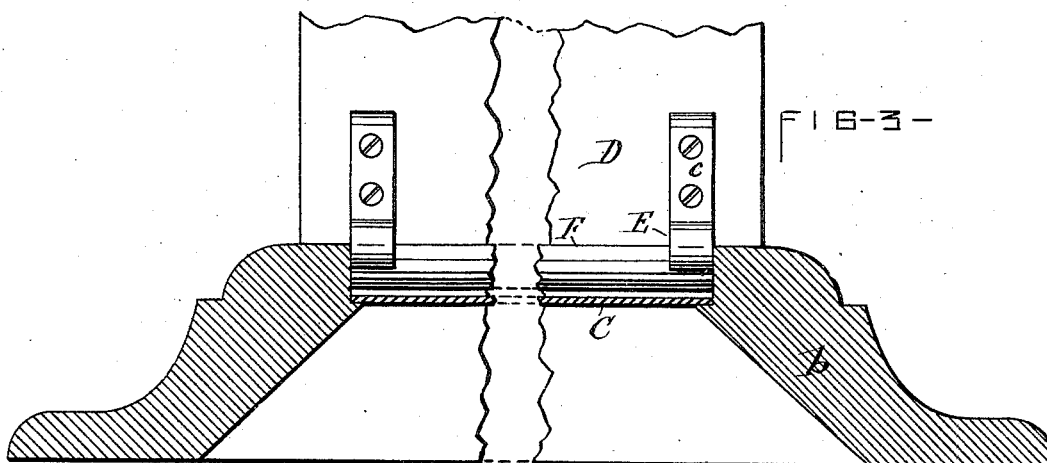


FIG 3-

ATTEST—
Wm E Raymond
C. Bendixson

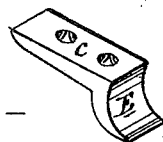


FIG 4-

INVENTOR—
John Maxwell
per Drull, Laessle & Co
his Atty

UNITED STATES PATENT OFFICE.

JOHN MAXWELL, OF ONEIDA, NEW YORK.

BURIAL-CASKET.

SPECIFICATION forming part of Letters Patent No. 302,753, dated July 29, 1884.

Application filed December 20, 1883. (No model.)

To all whom it may concern:

Be it known that I, JOHN MAXWELL, of Oneida, in the county of Madison, in the State of New York, have invented new and useful
5 Improvements in Burial-Caskets, of which the following, taken in connection with the accompanying drawings, is a full, clear, and exact description.

This invention relates to the class of burial-caskets which are provided with an opening in the head portion of the lid, and with a removable supplemental cover over said opening.

The object of the invention is to provide
15 simple, convenient, comparatively inexpensive, and effective means for detachably connecting the said supplemental cover to the casket-lid; and to that end the invention consists in rounding convex the lower portion of
20 the edge of the usual cross-bar adjacent to the head-opening, and securing to the under side of the supplemental cover hooks or lugs curved to correspond to the aforesaid rounded edge, and arranged to engage with said edge
25 and to abut against the two side edges of the opening, so that said hooks shall serve to guide the cover in applying it to the opening and sustain the cover laterally when applied as aforesaid.

In the annexed drawings, Figure 1 is a top view of a burial-casket provided with my improvements. Fig. 2 is an enlarged longitudinal sectional view of the improved connection of the supplemental cover or face-glass
35 cover with the casket-lid. Fig. 3 is a transverse section of the same with the face-glass cover raised, and Fig. 4 is a detached isometric view of the hook by which the face-glass cover is connected with the casket-lid.

A represents the lid of a burial-casket, having in its head portion an opening, B, provided with the face-glass C, which in this case is arranged to slide in longitudinal ways *a* in the side rails, *b*, of the lid, as represented in
45 Figs. 2 and 3 of the drawings.

D denotes the face-glass cover in the form of a supplemental lid mounted removably on the lid A and closing the opening B.

F is the cross-plate, forming the central
50 portion of the casket-lid, and having one of its edges forming the lower end of the opening B. Said edge I form rounding or convex

on its lower portion, as illustrated in Fig. 2 of the drawings.

To the under side of the cover D, I secure
55 hooks or lugs E, which are curved to correspond to the convexity of the edge of the cross-plate F, and are provided with attaching-shanks *e*, having perforations for the reception of the attaching-screws. Said hooks
60 or lugs I arrange on the cover D in such relative positions that when said cover is properly placed over the opening B the hooks or lugs E E pass under and engage with the rounded edge of the cross-plate F, and at the
65 same time abut with their outer sides against the two side edges of the opening.

In applying the cover D to the opening B, the hooks E E enter the opening in proximity to the two side edges thereof, as shown in
70 Fig. 3 of the drawings, and thus guide the cover onto its seat on the lid A, and in carrying the cover down onto its seat the hooks E E slide under the bearings afforded by the rounded edge of the cross-bar F of the lid, 75 the usual latch, L, being connected to the opposite end of the cover D to lock the same in its closed position.

I do not claim, broadly, the hooks E herein described, as I am aware the same are not new, 80 but

What I do claim as my invention, and desire to secure by Letters Patent, is—

In a burial-casket lid provided with the opening B and face-glass cover D, the combination of the cross-plate F, having the lower
85 portion of the edge adjacent to the opening B rounded or convex, and the hooks or lugs E E curved to correspond to the aforesaid convex edge, and secured to the under side
90 of the face-glass cover to engage with said edge, and to abut against the side edges of the opening, substantially as described and shown.

In testimony whereof I have hereunto signed
95 my name and affixed my seal, in the presence of two attesting witnesses, at Oneida, in the county of Madison, in the State of New York, this 12th day of December, 1883.

JOHN MAXWELL. [L. s.]

Witnesses:

C. WILL. CHAPPELL,
J. J. SHERWOOD.