

(No Model.)

L. JACQUES.
SLEIGH KNEE.

No. 303,017.

Patented Aug. 5, 1884.

Fig. 1.

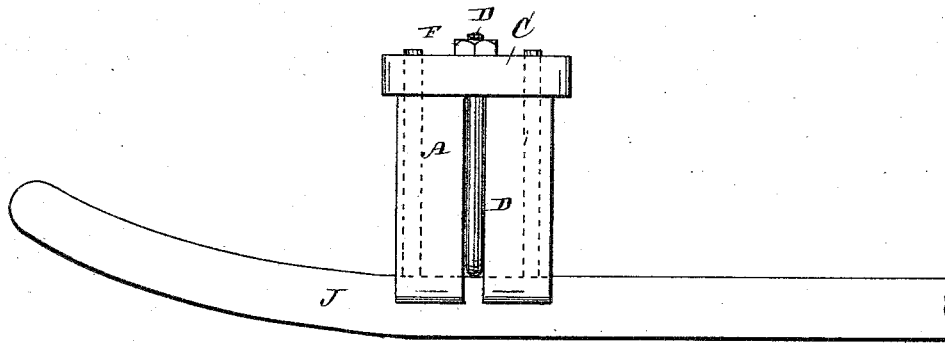


Fig. 2.

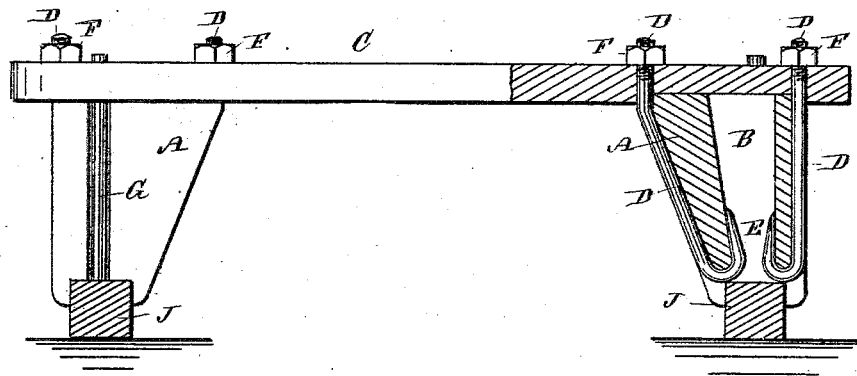
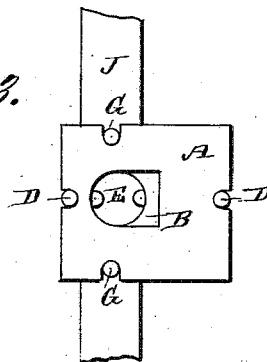


Fig. 3.



WITNESSES:

Pho. G. Hatten.
C. Sedgwick

INVENTOR:

L. Jacques
BY *Munn & Co*
ATTORNEYS.

UNITED STATES PATENT OFFICE.

LAURENT JACQUES, OF LAKE LINDEN, MICHIGAN.

SLEIGH-KNEE.

SPECIFICATION forming part of Letters Patent No. 303,017, dated August 5, 1884.

Application filed March 19, 1884. (No model.)

To all whom it may concern:

Be it known that I, LAURENT JACQUES, of Lake Linden, in the county of Houghton and State of Michigan, have invented a new and Improved Sleigh-Knee, of which the following is a full, clear, and exact description.

The object of my invention it to provide a new and improved sleigh-knee, which is simple in construction, strong, and durable.

The invention consists in the combination, with a sleigh-knee or leg, of hook-rods held in grooves in the side of the leg end, passed through the cross-piece and having nuts screwed on the upper ends. Rods projecting upward from the runner pass through longitudinal grooves in the front and rear sides of the leg and through the cross-piece.

Reference is to be had to the accompanying drawings, forming part of this specification, in which similar letters of reference indicate corresponding parts in all the figures.

Figure 1 is a side view of my improved sleigh-knee. Fig. 2 is a cross-sectional elevation of a sleigh provided with my improved knee, parts being broken away. Fig. 3 is a plan view of the knee.

The leg or knee A is provided with a longitudinal aperture, B, extending from the top to the bottom, and provided in its bottom with a groove parallel with the runner J, and adapted to receive the upper part of the same. The knee is provided in each side with a groove extending from top to bottom. The cross-piece C is provided at each end with a recess in its under surface, which recesses are adapted to receive the upper ends of the knees or legs A. In each side groove of each leg or knee a rod, D,

is held which is provided on its lower end with a hook, E, which is passed over the bottom edge of the knee above the runner, and has its hook end projecting upward in the aperture B. The upper ends of the rods D pass through the cross-piece C, and nuts F are screwed on the upper ends of the rods, which nuts are drawn up tight, thereby pressing the cross-piece C firmly down on the top of the leg or knees. Rods G, projecting upward from the runner J, pass through the grooves on the front and rear sides of the leg or knees, and project up through the cross-piece C. The legs or knees are wider at the top than at the bottom, and the inner sides are beveled from the top to the bottom.

The knee is stronger than the usual knee, simple in construction, more durable, and the cross-piece C can always be held firmly on the knee.

Having thus described my invention, I claim as new and desire to secure by Letters Patent—

The sleigh-knee A, having a vertical recess, B, vertical grooves in its sides, and cut away at its lower end, in combination with the cross-piece C, hooked bolts D, engaging the lower end of the knee with their hooked ends, and passing up through the side grooves and the cross-piece C, and there secured by nuts, and the runner J, provided with bolts G, passing up through the end grooves of the knee and through the cross-piece, substantially as set forth.

LAURENT JACQUES.

Witnesses:

EUSEBE ROCK,
GASPARD O. GIRARDIN.