

(No Model.)

I. L. TWISS.

CIGAR SUPPORT.

No. 305,550.

Patented Sept. 23, 1884.

Fig. 1

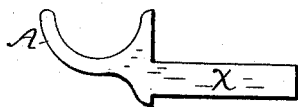


Fig. 3

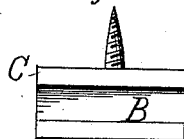


Fig. 2

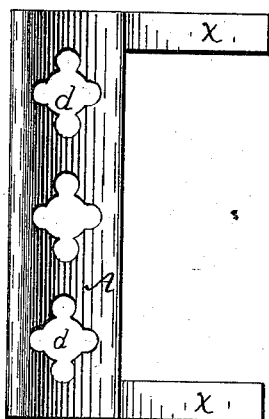


Fig. 4

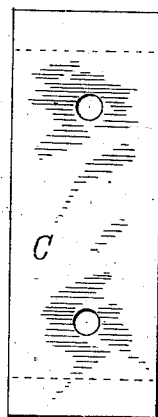


Fig. 5

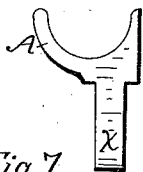


Fig. 6

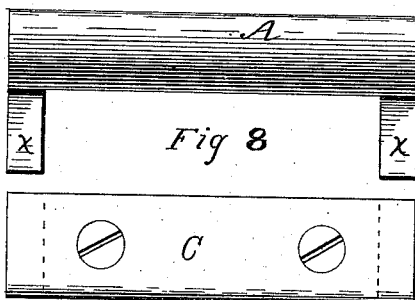


Fig. 7

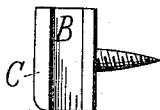


Fig. 8

WITNESSES:

George L. Barnes
J. D. Outrick

INVENTOR

Ira L. Twiss
BY
Julius Twiss
ATTORNEY

UNITED STATES PATENT OFFICE.

IRA L. TWISS, OF MERIDEN, ASSIGNOR OF ONE-HALF TO JAMES ROBERTS,
OF NEW HAVEN, CONNECTICUT.

CIGAR-SUPPORT.

SPECIFICATION forming part of Letters Patent No. 305,550, dated September 23, 1884.

Application filed February 19, 1884. (No model.)

To all whom it may concern:

Be it known that I, IRA L. TWISS, a citizen of the United States, residing at Meriden, in the county of New Haven and State of Connecticut, have invented a new and useful Cigar-Supporter, of which the following is a specification.

The object of my invention is to provide a convenient supporter for lighted cigars, easily attachable to billiard and other tables, desks, settees, pianos, and other articles in the vicinity of which it is necessary or desirable to temporarily deposit lighted cigars. Smokers have heretofore laid their cigars upon such articles of furniture, strewing them with ashes and involving the risk of a conflagration or the marring of such articles of furniture.

In the drawings, Figure 1 shows an end view, and Fig. 2 a plan view, of my improved cigar-receptacle as applied to a table or other horizontal object. Fig. 3 is an end view, and Fig. 4 a plan view, of the supporting-plate. Figs. 5 and 6 are views of a receptacle as applied to vertical objects, and Figs. 7 and 8 are views of the corresponding supporting-plate.

The device consists, essentially, of a curved plate, A, formed with suitable flanges or projections, by means of which it can be fastened to objects.

The form of the device and mode of attachment can be variously modified, but that described and shown is preferred.

In the drawings, the curved plate A has a lateral, horizontal, or perpendicular projection, X, upon each end, and these projections fit corresponding grooves, B, in the ends of a plate, C, which is fastened by screws to the table or other object. By this arrangement the receptacle can be easily removed for cleaning or other purposes without unscrewing the entire device from the wood, and the whole forms a neat and useful device. The curved plate A can be made with ornamental perforations *d*, as in Fig. 2, or without them, as in Fig. 6; and it is obvious that the receptacle can be used to hold small articles other than lighted cigars.

I claim and desire to secure by Letters Patent—

The cigar-supporting device herein described, consisting of the curved receptacle A, provided with projections X X, and the grooved and perforated plate C, as and for the purpose set forth.

IRA L. TWISS.

Witnesses:

WM. S. ROBINSON,
L. S. TWISS.