

(No Model.)

J. C. FORTH.

MONTHLY CALENDAR AND BUSINESS DIRECTORY.

No. 305,586.

Patented Sept. 23, 1884.

Fig. 1

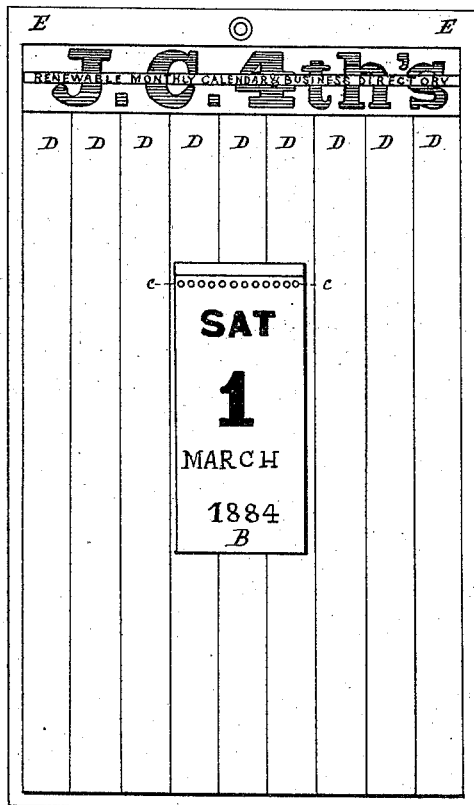


Fig. 2

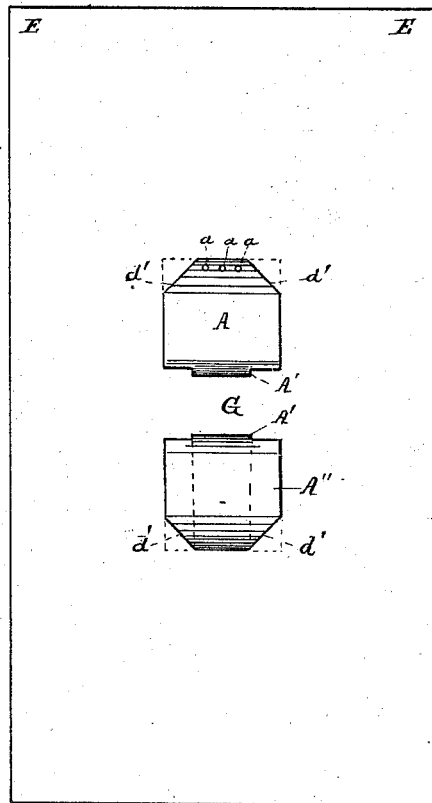


Fig. 3.

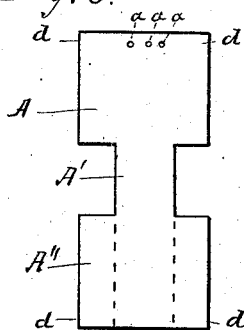
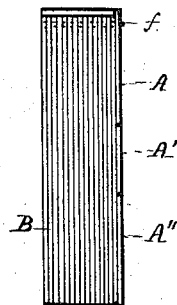


Fig. 4.



WITNESSES

Morton Toulmin

[Signature]

INVENTOR

John C. FORTH

[Signature]

Attorney

UNITED STATES PATENT OFFICE.

JOHN C. FORTH, OF EVANSVILLE, INDIANA.

MONTHLY CALENDAR AND BUSINESS DIRECTORY.

SPECIFICATION forming part of Letters Patent No. 305,586, dated September 23, 1884.

Application filed February 25, 1884. (No model.)

To all whom it may concern:

Be it known that I, JOHN C. FORTH, a citizen of the United States, residing at Evansville, in the county of Vanderburg and State of Indiana, have invented certain new and useful Improvements in Renewable Monthly Calendar and Business Directory, of which the following is a specification, reference being had therein to the accompanying drawings.

This invention relates to improvements in renewable monthly calendars and business directories, and has for its object to provide simple means for indicating the days of the month and the days of the week of each year, to be used in combination with a card or chart, arranged to display the names and business of residents of towns or cities in properly-classified lists. This object is attained by the devices illustrated in the accompanying drawings, forming a part of this specification, in which—

Figure 1 is a front view of the entire device. Fig. 2 is a view showing the means of attaching the calendar to the chart or card. Fig. 3 is a detached view of the piece of card A, to which the calendar is attached, and by means of which it is fastened to the card E or chart. Fig. 4 is a detached side view of the calendar and the piece of card-board A.

The letter A indicates a piece of card or paste board, on the opposite sides of which a portion is cut out, leaving a narrow part, A', and the wide portion A'' cut lightly on one side, as shown by the dotted lines, in order that the two sides may be bent, one over the other, in such manner that it may be passed

through the loop G. At the top of the card are perforations *a*, through which a wire may be passed in the form of staples or loops, as a means of attaching the card A to sheets of bibulous paper having the day of the week, the month, and the year printed thereon, each sheet being perforated across the top by a row of perforations, *c*, to facilitate the sheets being torn off, when they may be used for the purposes of blotting-paper.

E is a card-board or piece of pasteboard having suitable spaces, D, ruled thereon to receive advertisements. Near the middle thereof are cut transverse slits, which form a loop, G; also four equidistant diagonal slits, *d'*, for the purpose of holding the card-board A in its proper position, as shown in Fig. 2, in which it will be observed that the part A' is held by the loop G, and that the corners *d* of the card A are tucked into the diagonal slits *d'*, and is thus firmly secured thereto, together with the calendar B.

Having described my invention, what I desire to secure by Letters Patent, and claim, is—

In a renewable monthly calendar and business directory, the card-board E, having loop G and slits *d'*, in combination with card-board A, having parts A' and A'' and calendar B, as described, and for the purposes set forth.

In testimony whereof I affix my signature in presence of two witnesses.

JNO. C. FORTH.

Witnesses:

HENRY LUBBERMANN,
JESSE W. WALKER.