

(No Model.)

R. S. PICKETT.
SOLE OR HEEL PROTECTOR.

No. 305,630.

Patented Sept. 23, 1884.

Fig. 1.

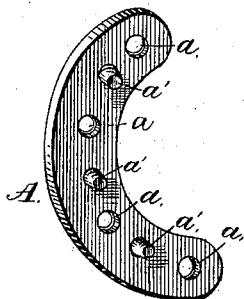


Fig. 2.

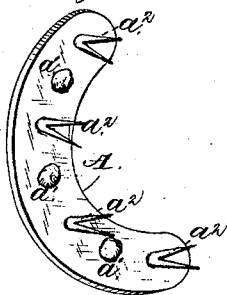


Fig. 3.

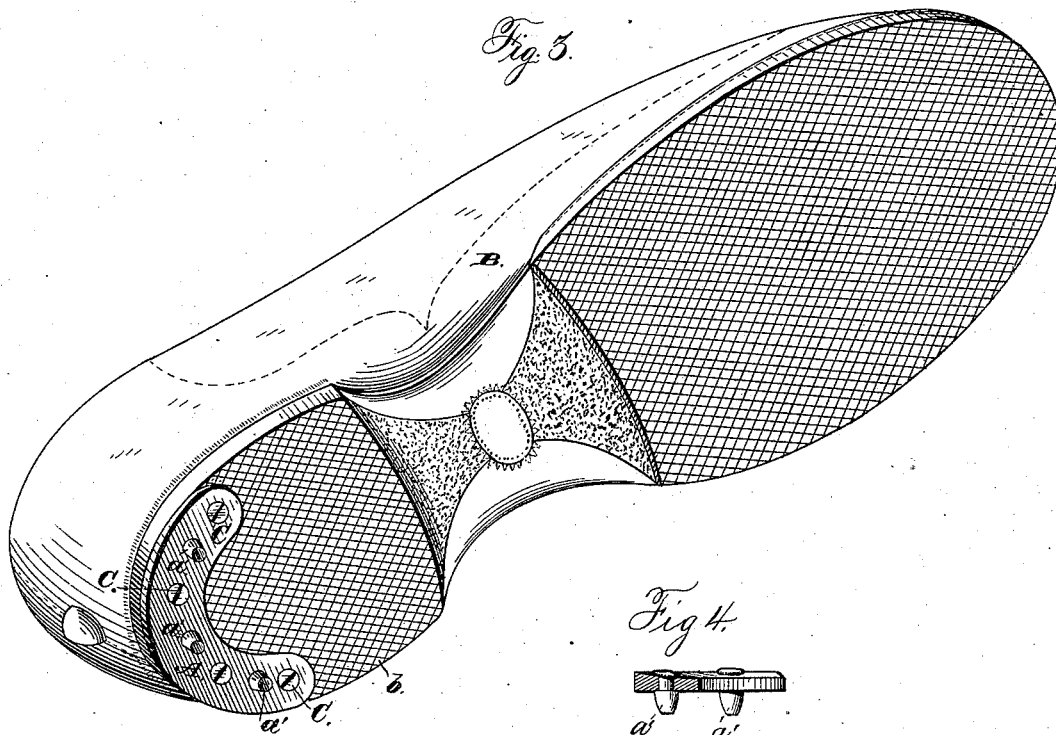


Fig. 4.



Witnesses:

J. C. Turner

Jas. E. Hutchinson.

Inventor:

Rufus S. Pickett, by
Gimble & Russell, his Attys

UNITED STATES PATENT OFFICE.

RUFUS S. PICKETT, OF NEW HAVEN, CONNECTICUT, ASSIGNOR OF ONE-HALF
TO W. J. ROOT, OF SAME PLACE, AND JAMES GRAHAM, OF ORANGE
TOWNSHIP, CONNECTICUT.

SOLE OR HEEL PROTECTOR.

SPECIFICATION forming part of Letters Patent No. 305,630, dated September 23, 1884.

Application filed July 17, 1884. (No model.)

To all whom it may concern:

Be it known that I, RUFUS S. PICKETT, of New Haven, in the county of New Haven, and in the State of Connecticut, have invented certain new and useful Improvements in Heel-Protectors; and I do hereby declare that the following is a full, clear, and exact description thereof, reference being had to the accompanying drawings, making a part of this specification, in which—

Figure 1 is a bottom perspective view of my protecting-plate; Fig. 2, a perspective view of the upper side of the same, showing one form of fastening means used by me; Fig. 3, a perspective view of a rubber shoe with the protector attached thereto; and Fig. 4, a detail sectional view of the protecting-plate, showing the manner of fastening the spurs in the plate.

Letters of like name and kind refer to like parts in each of the figures.

The design of my invention is to protect the heel or sole of a boot or shoe from undue wear, and at the same time to furnish the wearer with a secure foot-hold upon walks which have been rendered slippery by ice or from any other cause, to which end said invention consists in the protecting-plate adapted to be fastened to the boot or shoe, and constructed as hereinafter specified.

In carrying my invention into effect I give to a soft-metal plate, A, such longitudinal curvature as to adapt it to the shape of the rear portion of the bottom of the heel *b* of a shoe, B, and provide at suitable points within the same a number of holes, *a*, through which the screws C, or other equivalent fastenings, may pass upward into said heel for the purpose of securing said plate thereon. From suitable points upon the lower face of the plate A project downward a number of spurs, *a'*, which are preferably tapering in form, and are secured within said plate by passing their upper reduced ends through corresponding openings and then heading said ends down upon the upper side of the same. The spurs *a'* are constructed from steel, and after having been secured in position within the plate A are hardened by heating the whole device and then plunging the same into water, oil, or other well-known tempering fluid.

The body or base of the device possesses all required strength, toughness, and flexibility,

and may be secured in position upon and used with a shoe without danger of breakage, while the spurs, upon which comes the principal wear, may have any desired degree of hardness to enable them to withstand such wear. Were the body and spurs of the protector formed from iron, said spurs would speedily wear away and become worthless, while if the entire device were formed from steel said plate would be rendered so brittle by the tempering of its spurs as to be very liable to breakage while being secured upon a shoe or from after use.

The plate A, I prefer to make of malleable iron, as no wear comes upon it, and the necessary toughness and strength are possessed by that metal.

In Fig. 2 I show with the plate one form of means for fastening it in place, which can be used, if desired, instead of the screws shown used with the plate, as shown in Fig. 3. The tacks or nails *a*² are split or slotted at their points and for some distance up their shanks, so that when they are driven into the leather they will spread out on each side and clinch themselves or can be clinched in any desired way.

Obviously, and as is well known to those familiar with the art, a protector such as I have described and shown can be used for either the heel or the sole, or both, of a boot or shoe, as desired. Only a slight change in the shape, which is not an essential part of my invention would be necessary to suit the protector, as shown and described hereinbefore, to be used as a sole protector.

Having thus fully set forth the nature and merits of my invention, what I claim as new is—

As an improved article of manufacture, a protecting-plate for boots and shoes, consisting of a malleable-metal plate adapted to be fastened in place on the heel or sole and provided with steel spurs made separate and fastened in the plate by heading or riveting, substantially as shown and described.

In testimony that I claim the foregoing I have hereunto set my hand this 14th day of June, A. D. 1884.

RUFUS S. PICKETT.

Witnesses:

ELI MIX,

WILLIAM E. HIGGINS.