

(No Model.)

T. B. McCURDY.

VEHICLE TOP.

No. 305,832.

Patented Sept. 30, 1884.

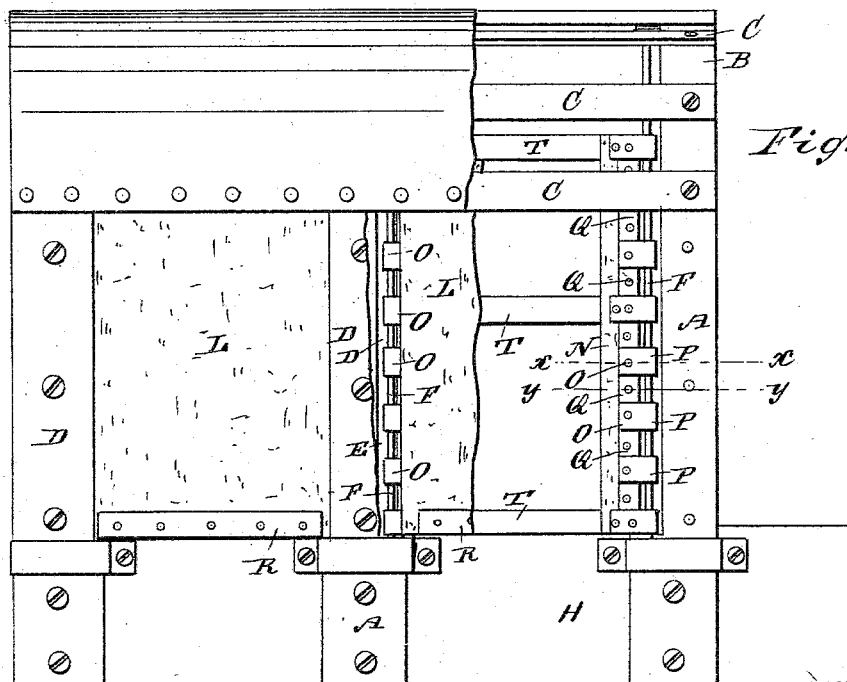


Fig. 1.

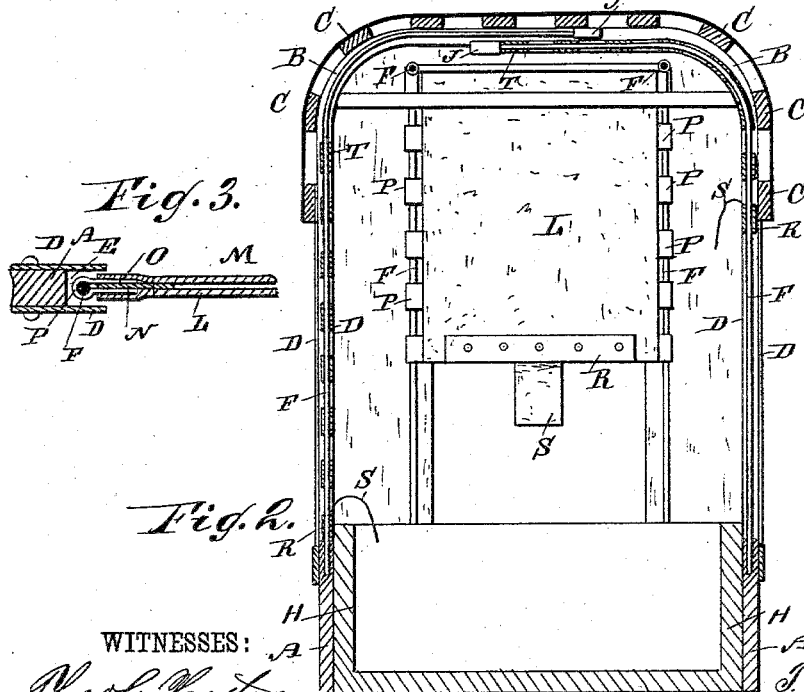


Fig. 2.

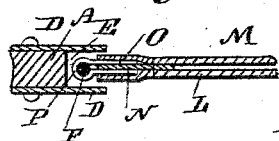


Fig. 3.

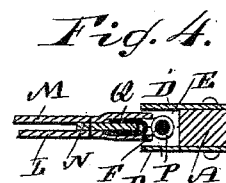


Fig. 4.

WITNESSES:

*Thos. G. Kottler*  
*to Sedgwick*

INVENTOR:

*T. B. McCurdy*  
BY *Munroe H.*  
ATTORNEYS.

# UNITED STATES PATENT OFFICE.

THOMAS B. McCURDY, OF LANCASTER, TEXAS.

## VEHICLE-TOP.

SPECIFICATION forming part of Letters Patent No. 305,832, dated September 30, 1884.

Application filed June 13, 1884. (No model.)

*To all whom it may concern:*

Be it known that I, THOMAS B. McCURDY, of Lancaster, in the county of Dallas and State of Texas, have invented a new and Improved Vehicle-Top, of which the following is a full, clear, and exact description.

The object of my invention is to provide a new and improved vehicle-top on which the curtains are held in such a manner that they can be easily raised or lowered and held at any desired height.

The invention consists in the combination, with a vehicle-top, of upright rods having their upper ends bent to conform to the shape of the roof, the upper ends of the rods being secured to strips held on the under side of the roof of the top, and on which rods curtains are held to slide up and down.

The invention also consists in the combination, with a curtain and its lining, of strips held between the side edges of the curtain and lining, and of clips held on the said strips and having eyes on the outer ends, through which eyes the rods pass.

Reference is to be had to the accompanying drawings forming a part of this specification, in which similar letters of reference indicate corresponding parts in all the figures.

Figure 1 is a longitudinal elevation of my improved vehicle-top, parts being broken out. Fig. 2 is a cross-sectional elevation of the same. Fig. 3 is an enlarged sectional plan view of part of the same on the line *xx*, Fig. 1. Fig. 4 is an enlarged sectional plan view of the same on the line *yy*, Fig. 1.

The vehicle-top is formed on the bows B, on which strips C are secured, to which in turn the top or roof covering is fastened.

On the front and rear surface of each side standard, A, of the bows B plates D are secured, the side edges of which project beyond the side edges of the standards, thereby forming grooves E on the side edges of the standards; or the said grooves can be formed in any other suitable manner. Guide-rods F have their lower ends secured to the lower parts of the bows, pass up through the grooves E, and are bent parallel with the bows and top, and have their upper ends secured to strips J, secured longitudinally to the bottom edges of the bows B at that side of the central line of the top opposite the side to which the lower

ends of the corresponding guide-rods are secured. The strips J are arranged in different horizontal planes, so that the rods F on opposite sides of the top will not interfere with each other. Like rods F are arranged on the rear end of the vehicle-top. The curtains L, made of oil-cloth, &c., are provided with linings M, and between the side edges of the curtains and the linings strips N, of oil-cloth or other fabric, are held, to which strips the edges of the curtains and linings are secured.

On the strips N clips O are riveted or otherwise secured, on the outer ends of which eyes P are formed, and between each two clips O U-shaped clips Q are riveted or otherwise secured on the strips, which clips Q cover the outer edges of the strips. The rods F pass through the eyes P of the clips O.

To the bottom edge of each curtain L a stiff piece or strip, R, is secured, and to the middle of each piece R a tongue, S, or other handle-piece for moving the curtain up or down, is secured. A cross-piece, T, made of sheet metal, is held between the curtains and linings at about the middle of the curtains, and another at the top. If desired, a curtain may be arranged in the manner described on the front of the vehicle-top. The side edges of the curtains are thus held to slide on the rods F. When the curtains are moved upward they slide on the curved parts of the rods and the parts held transversely under the roof. When two corresponding opposite side curtains are raised their inner ends overlap. When raised the end curtains are below the side curtains, as the end rods, F, are below the top parts of the side rods. The end rods, F, need not be held within grooves, like the side rods.

The curtains can be raised or lowered, and are held in any desired position by the friction of the eyes P on the rods F. The curtains can be adjusted by persons in the vehicle or outside of the same. The joints are very close, and the curtains do not bag under the effects of a strong wind. The projecting edges of the plate D conceal the rods F, and the clips are concealed by the curtain, which covers them.

Having thus described my invention, what I claim as new, and desire to secure by Letters Patent, is—

1. A vehicle-top provided with vertical

rods the upper ends of which are under the roof of the top, and with curtains held to slide on the rods, substantially as herein shown and described.

5 2. The combination, with a vehicle-top, of upright rods having their upper ends bent under the roof of the top, and also having the upper ends secured to strips held to the under side of the roof, and of curtains held to slide  
10 on the rods, substantially as herein shown and described.

3. The combination, with a vehicle-top, of upright rods and curtains having linings, and of clips held between the edges of the lining  
15 and curtain, and having eyes on their outer ends, substantially as herein shown and described.

4. In a vehicle-top, the combination, with curtains and linings, of strips held between  
20 the side edges of the curtains and linings, and of clips held on the strips, and provided with eyes on the outer ends, substantially as herein shown and described.

5. The combination, with a vehicle-top, of  
25 the strips J, held longitudinally under the roof at different elevations, the rods F, having their upper ends held on the strips J J, and of curtains held to slide on the rods, substantially as herein shown and described.

6. In a vehicle-top, the combination, with  
30 the standards A, of plates D, secured on the inner and outer surfaces, the side edges of the plates projecting beyond the side edges of the standards, upright rods held in the grooves  
35 formed by the projecting edges of the plates, and of curtains held to slide on the rods, substantially as herein shown and described.

7. In a vehicle-top, the combination, with the curtain L and its lining M, of the strips  
40 N, held between the side edges of curtain and lining, the clips Q, and the clips O, having eyes P, which clips O and Q are held on the strips N and between the side edges of the curtain and lining, substantially as herein  
45 shown and described.

8. In a vehicle-top, the combination, with  
the upright rods F, of the curtains M, eyes P, projecting from the side edges of the curtain, and of the stiff strip or piece R, secured to the  
50 bottom of the curtains, substantially as herein shown and described.

THOMAS B. McCURDY.

Witnesses:

J. W. BASKIN,  
PAUL L. HENRY.