

(No Model.)

2 Sheets—Sheet 1.

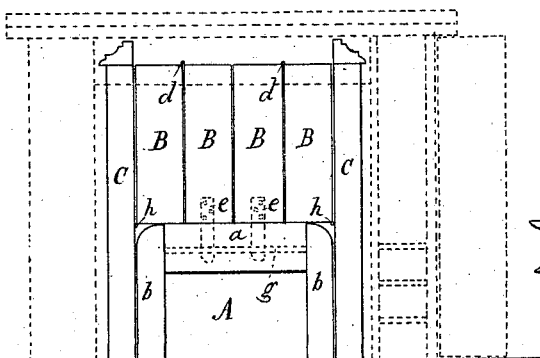
M. M. WAGNER.

COMBINED FOLDING BEDSTEAD AND TABLE.

No. 305,986.

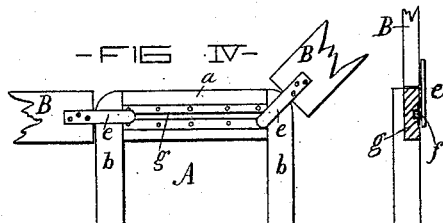
Patented Sept. 30, 1884.

- FIG I -

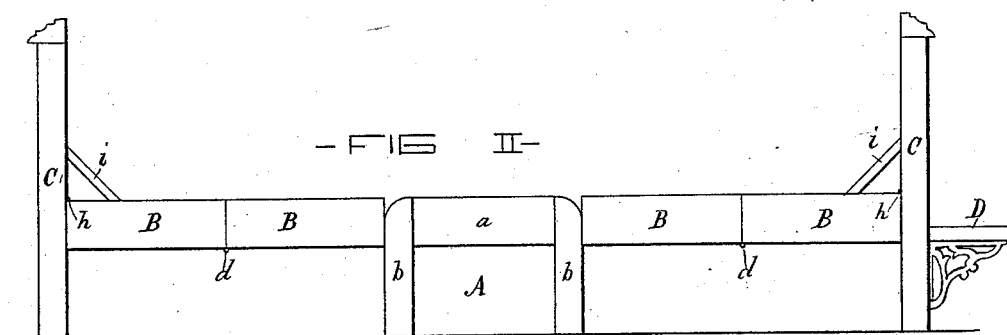


- FIG V -

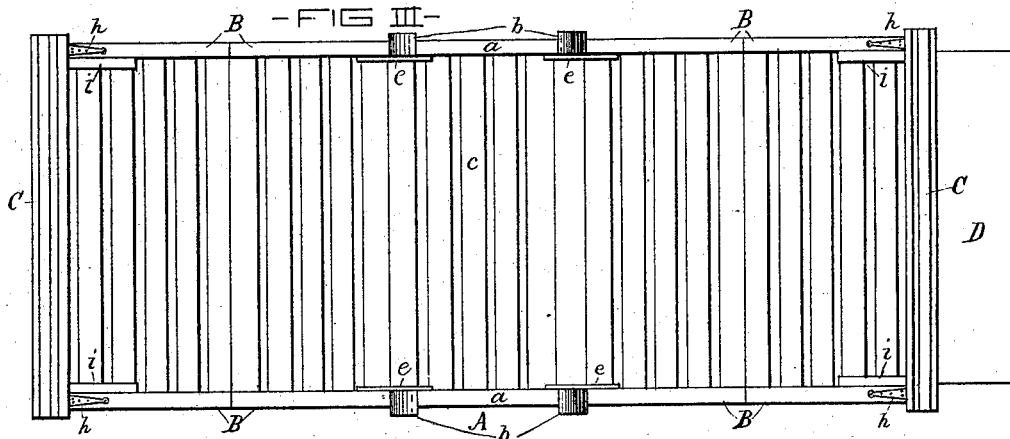
- FIG IV -



- FIG II -



- FIG III -



- WITNESSES -

- INVENTOR -

Daniel Fisher
Renoux Reese

Mary M. Wagner
by G. H. Howard,
Atty.

(No Model.)

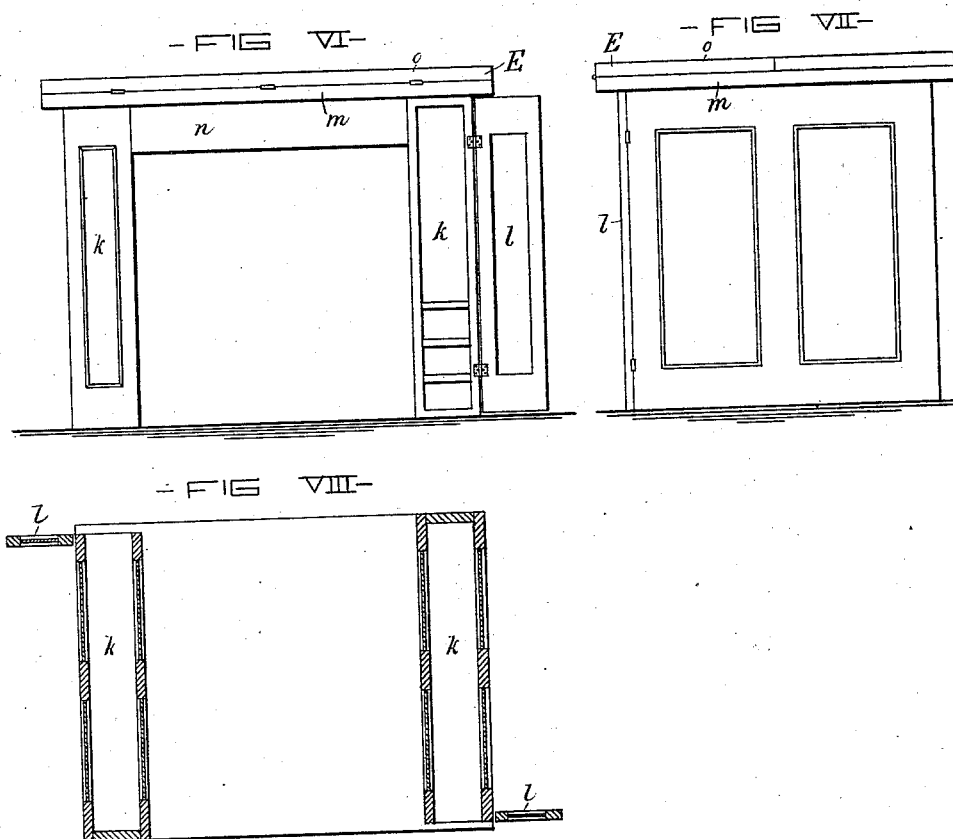
2 Sheets—Sheet 2.

M. M. WAGNER.

COMBINED FOLDING BEDSTEAD AND TABLE.

No. 305,986.

Patented Sept. 30, 1884.



-WITNESSES-

Dani Fisher
Renous Reese

-INVENTOR-

Mary M. Wagner,
by G. H. Howard,
Att'y.

UNITED STATES PATENT OFFICE.

MARY M. WAGNER, OF BALTIMORE, MARYLAND.

COMBINED FOLDING BEDSTEAD AND TABLE.

SPECIFICATION forming part of Letters Patent No. 305,986, dated September 30, 1884.

Application filed August 23, 1883. (No model.)

To all whom it may concern:

Be it known that I, MARY M. WAGNER, of the city of Baltimore, and State of Maryland, have made certain Improvements in a Combined Folding Bedstead and Table, of which the following is a specification.

This invention relates to the combination and arrangement of the various parts of the bedstead and table, as will hereinafter fully appear.

In the drawings forming a part hereof, Figure I is a view of the bedstead and table united, the table being shown in dotted lines. Fig. II is a side view of the extended bedstead. Fig. III is a plan of Fig. II. Figs. IV and V are views of parts of the bedstead. Figs. VI, VII, and VIII are respectively a front view, a side view, and a sectional plan, of the table.

Similar letters of reference indicate similar parts in all the views.

A is the center piece of the bedstead, which consists of two short side rails, *a*, having legs *b* rigidly connected by slats *c*.

B B are the extension side rails in sections hinged together at *d*. The inner ends are provided with bars *e*, having pins *f* adapted to slide in grooved strips *g* fastened in the inner sides of the rail *a*. By this means the extension-rails can be folded, and the sections moved to meet centrally of the center piece, A, as shown in Fig. I. It will be understood that each section of rail B is attached to the corresponding one on the other side of the bedstead by slats *c'*, corresponding in length with those *c* before described. The outer ends of the rails B are attached by hinges *h* to the head-boards C, and when the bed is extended the head-boards are fixed by means of brackets *i*.

D is a folding seat at one end of the bedstead.

E is the table, (shown in Figs. VI, VII, and VIII,) and it consists of two boxes, *k*, having doors *l*, so as to form closets for the reception of small articles, connected by the top, *m*, and the rail *n*. The top *m* is provided with two leaves, *o*, hinged thereto, and which fold, as shown in Figs. VI and VII.

When the bedstead is folded, a space is left between the rails for the mattress, which is in sections hinged together, but which is not shown in the drawings. When the bedstead is not in use, the table E is placed over it, as shown in Fig. I.

I claim as my invention—

1. The combination of a furniture structure consisting of a bed composed of a central stand or section having grooves, as described, in two sections provided with projections engaging said grooves of the central stand, two additional sections hinged to the first-named sections, and two end sections, substantially as set forth.

2. The combination of a furniture structure consisting of a bed composed of a central stand or section having grooves, as described, two sections provided with projections engaging said grooves of the central stand, two additional sections hinged to the first-named sections, two end sections therefor, and a desk constituting a cover or case adapted to be placed over said bed when folded, substantially as set forth.

MARY M. WAGNER.

Witnesses:

EDWARD J. DIGGS,
DANL. FISHER.