

(No Model.)

J. LOCKHART.
RAILWAY.

No. 307,477.

Patented Nov. 4, 1884.

FIG. 1.

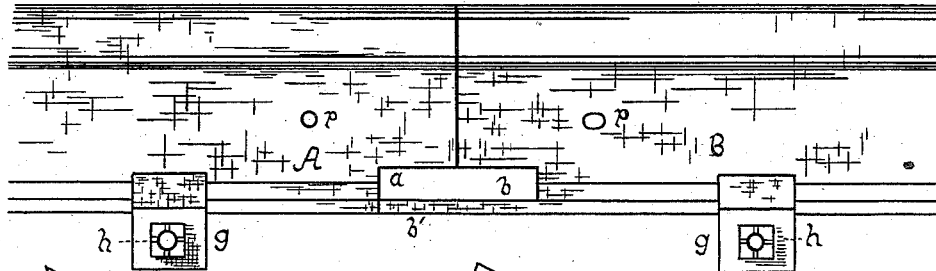


FIG. 3.

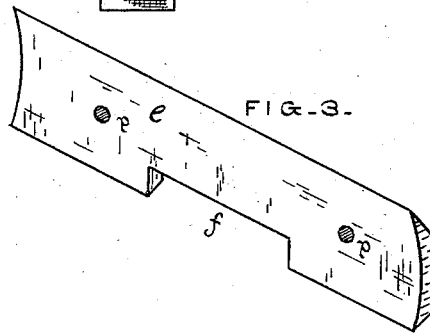


FIG. 2.

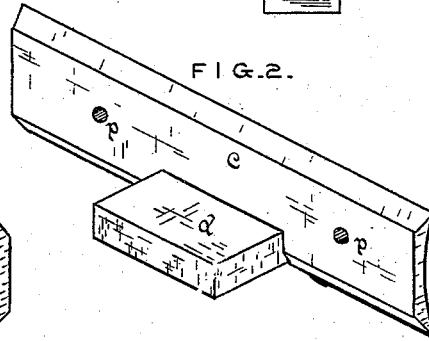
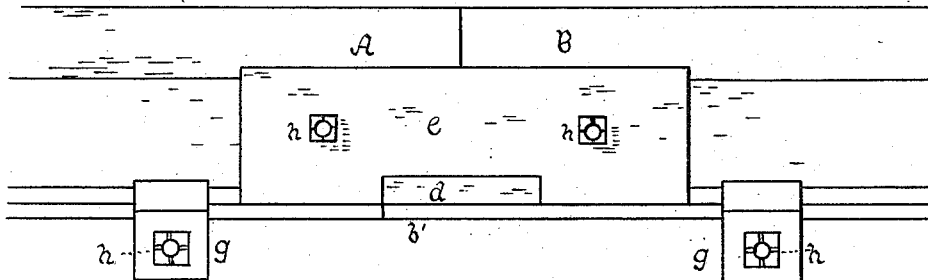


FIG. 4.



Witnesses
A. L. Hill
C. C. Clark

Inventor
JESSE LOCKHART
By L. P. Graham atty.

UNITED STATES PATENT OFFICE.

JESSE LOCKHART, OF NIANTIC, ILLINOIS.

RAILWAY.

SPECIFICATION forming part of Letters Patent No. 307,477, dated November 4, 1884.

Application filed June 11, 1883. Renewed May 12, 1884. (No model.)

To all whom it may concern:

Be it known that I, JESSE LOCKHART, a resident of the town of Niantic, county of Macon, and State of Illinois, have invented certain new and useful Improvements in Railways, of which the following is a specification.

This invention is in part an improvement on the device shown in Patent No. 229,538, granted to me July 6, 1880; and the object to be obtained is an increase of stability and durability.

In the drawings accompanying and forming a part of this specification, Figure 1 is a side elevation of a pair of my rails placed in position, but not secured. Figs. 2 and 3 show the form of the bars used to complete the joint. Fig. 4 is a side elevation of a joint of my railway complete.

A represents an end of a rail provided with offset *a*.

B represents the end of the contiguous rail, provided with offset *b* and extension *b'*.

c is a bar provided with block *d*, that fits in the opening formed by offsets *a* *b*.

e is a bar provided with recess *f*, that fits over the end of block *d*.

c and *e* are placed on the sides of the rail-joints, and secured by bolts passing through holes *p* *p*.

g *g* are clamp-blocks loosely mounted on rod *o*.

h *h* are nuts provided with diametrical grooves on their faces.

Rod *o* extends across the track, and is secured to the opposing rails by clamps *g* *g*.

When block *d* is placed in position in the rails and bars *c* and *e* bolted together, as indicated, an interlock is formed that makes the joint of great stability, and the holes *p* may be made sufficiently oblong to compensate for all expansion and contraction.

I claim—

The combination of rail A, provided with offset *a*, rail B, provided with offset *b* and extension *b'*, bar *c*, provided with block *d*, and bar *e*, provided with recess *f*, all secured in position, as and for the purpose set forth.

JESSE LOCKHART.

Attest:

J. D. WALKER,
L. P. GRAHAM.