

(No Model.)

J. W. NAGLE & T. CHALIFOUX.

J. W. NAGLE & T. CHALIFOUX.

BLANK BOOK.

No. 307,488.

Patented Nov. 4, 1884.

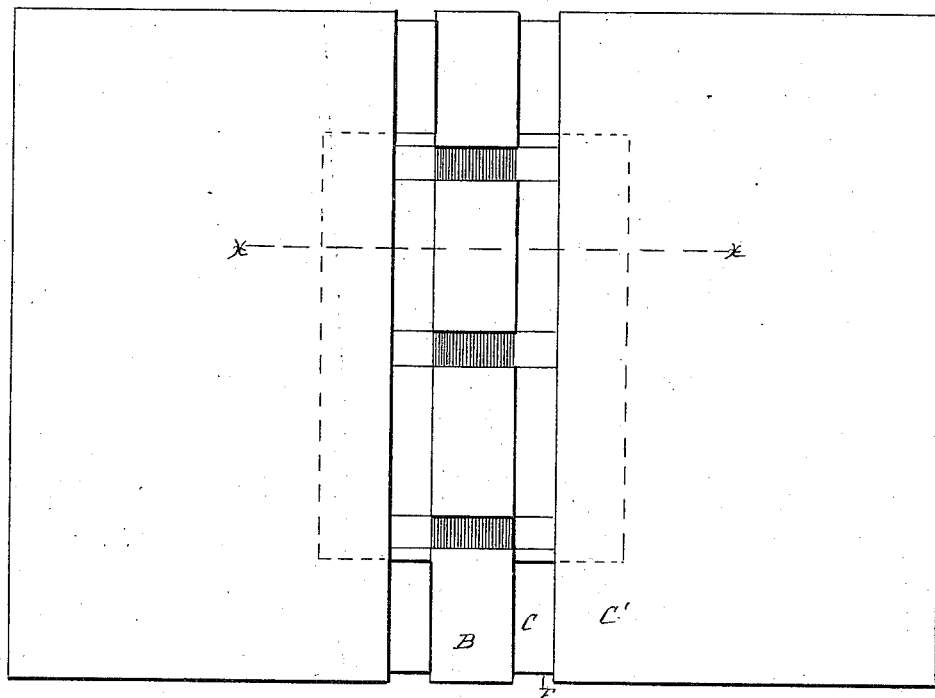


FIG. 1.

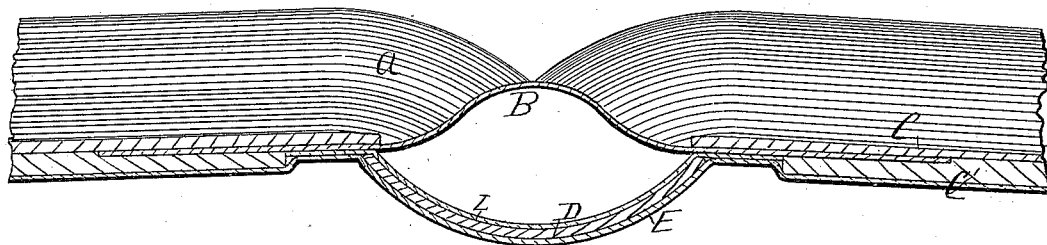


FIG. 2.

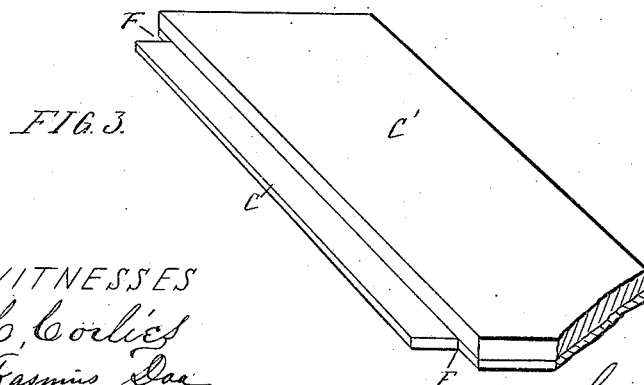


FIG. 3.

WITNESSES
A. C. Corlies
Frasius Doe

INVENTORS
JOHN W. NAGLE
TOUSSAINT CHALIFOUX.

BY *Leoburn Thuermer*
ATTORNEYS

UNITED STATES PATENT OFFICE.

JOHN W. NAGLE AND TOUSSAINT CHALIFOUX, OF CHICAGO, ILLINOIS.

BLANK BOOK.

SPECIFICATION forming part of Letters Patent No. 307,488, dated November 4, 1884.

Application filed May 7, 1883. (No model.)

To all whom it may concern:

Be it known that we, JOHN W. NAGLE, a citizen of the United States, residing at Chicago, in the county of Cook and State of Illinois, and TOUSSAINT CHALIFOUX, a subject of Great Britain, residing in Chicago aforesaid, have invented a new and useful Improvement in Blank Books, of which the following is a full, clear, and explicit description, reference being had to the accompanying drawings, which form a part thereof.

The object of our invention is, to bind a blank book in such manner that it will open flat and at any part of the book, so that it can be written in easily and handily, and at the same time be durable and remain in shape after long use.

The invention consists in the particular construction and arrangement of parts to facilitate this object, which will be fully described hereinafter, and definitely pointed out in the claims.

In the accompanying drawings, Figure 1 represents a back view of our book before the back-board is attached or leather covering applied. Fig. 2 represents a transverse sectional view upon the line *xx* after the book is finished, the back-board and leather covering being applied. Fig. 3 represents a detached broken view of a portion of one of the covers, showing the form in which the under board of the cover is made.

In the drawings, A represents the leaves of the blank-book. They are secured to the flesher or sheep B in the ordinary manner.

The cover of the book is composed of two or more thicknesses of paper-board, C and C'. The flesher or sheep B extends between these paper boards, where it is firmly secured.

D is the back-board of the book.

L is a flexible lining attached to either or both sides of the back-board D, with its edges extending beyond the back-board and firmly connected with the extended edge of the under board of the cover, so as to pass over the joint of the cover to strengthen it.

E represents the leather cover. The under board, C, of the cover extends against the back of the book under the edges of the back-board D, while the outer board or boards of the cover do not extend to the back-board, leaving a space between the back-board and the board or boards C' of the cover, as shown in Fig. 2 of the drawings. This space, which is ordinarily occupied by a flexible leather

connection connecting the back-board with the cover, is made stiff by the under board of the cover, as shown in Fig. 2. When the book is open, this under board of the cover, pressing against the back of the book, causes it to open freely and fully, so that the pages of the book can be written on their entire width readily and conveniently. The leverage of the under board of the cover upon the edges of the board cover D springs it slightly open as the book is opened. The under board should not extend any farther in than enough to rest squarely against the edge of the back-board, as shown in Fig. 2 of the drawings, in order that it may not be in the way when the book is shut. The under board, C, of the cover has notches F at the corners, which admits of the leather covering falling down in these notches and fitting closely upon the outer edge of the cover. The under boards of the cover C, by extending to and under the back-board D and against the back of the book the entire length of the leaves, prevent the cover from sagging and keep them in place on the book. Our book, bound in this manner, remains substantial, keeps its shape, and will open flat, and is a convenient durable blank book, which can be readily written in the entire width of the page at any part of the book.

Having fully described our invention, what we claim, and desire to secure by Letters Patent, is—

1. The combination of the under board, C, the outer board, C', the flesher or sheep B, the leaves A, and the cover E, the flesher being attached to the leaves and passing between the boards C and C', the under board, C, extending against the inner edge of the leaves, considerably beyond the edge of the outer board, and the flesher B and cover E extending in and across the depression formed by the said extension of the inner board, substantially as specified and shown.

2. The combination of the leaves A, the inner board, C, and outer board, C', the flesher B, attached to the edges of the leaves and passing under the inner board, the lining L, and the cover E, the flesher B, the lining L, and the cover E all coming together to form a joint between the back and lids, as shown.

JOHN W. NAGLE.

TOUSSAINT CHALIFOUX.

Witnesses:

A. M. BEST,

W. C. CORLIES.