

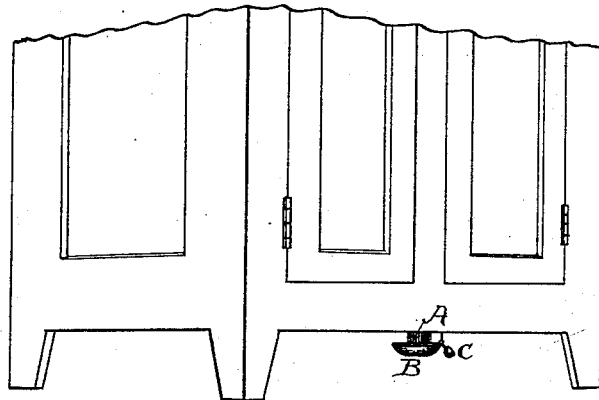
(No Model.)

R. JOYCE.

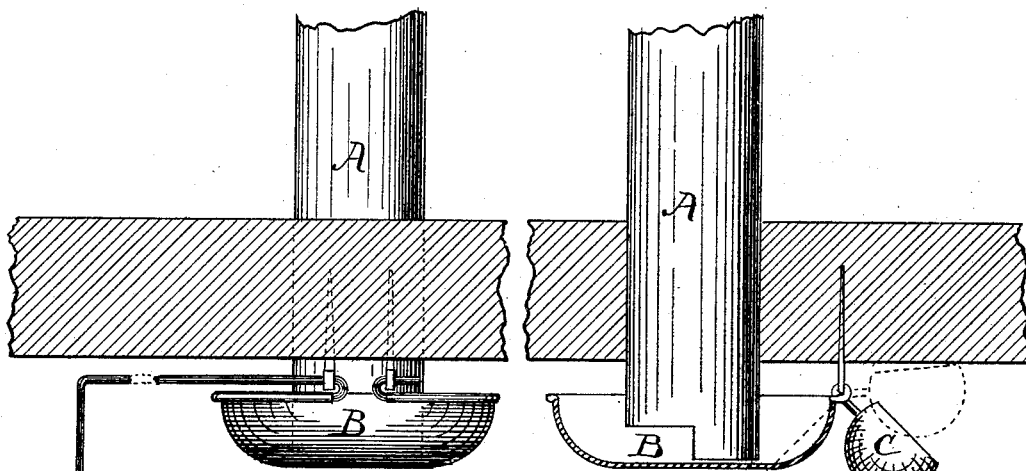
TRAP FOR REFRIGERATOR DRIP PIPES.

No. 342,518.

Patented May 25, 1886.



*Fig. 1.*



*Fig. 3.*

*Fig. 2.*

Witness,

*G. F. Pond*  
*J. R. Tibbitts*

Inventor,

*Roger Joyce*  
*per Geo. W. Tibbitts atty*

# UNITED STATES PATENT OFFICE.

ROGER JOYCE, OF BUFFALO, NEW YORK.

## TRAP FOR REFRIGERATOR DRIP-PIPES.

SPECIFICATION forming part of Letters Patent No. 342,518, dated May 25, 1886.

Application filed September 12, 1885. Serial No. 176,875. (No model.)

*To all whom it may concern:*

Be it known that I, ROGER JOYCE, of Buffalo, in the county of Erie and State of New York, have invented certain new and useful  
5 Improvements in Traps for Refrigerator Drip-Pipes, of which the following is a specification.

This invention has for its object to provide a trap for waste-drip pipes of refrigerators or ice-chests, which will automatically empty  
10 itself, or which may be readily emptied by means of a lever for tilting the cup.

My invention consists in the combination, with the waste-pipe, of a pivoted cup located beneath the bottom end of the pipe in such a  
15 manner that when the flow of waste water has become obstructed it will tilt and discharge from itself the water and sediment by reason of the superincumbent weight of its contents, and that waste which accumulates in the waste-  
25 pipe overbalancing a weight attached to the cup, thereby causing the cup to empty and wash itself out.

The accompanying drawings illustrate my invention.

30 Figure 1 is a perspective view of the lower part of a refrigerator having my improved trap attached. Fig. 2 is an enlarged sectional view of the trap. Fig. 3 shows the same having weighted lever attached.

35 A in the several figures is the lower end of a waste-pipe for conducting off water and sediment from melted ice in refrigerators or ice-chests. Heretofore such pipes have been left open at the bottom, or have had a cap or  
35 cup secured to them, and in some instances made detachable, requiring them to be removed for emptying. I provide, instead of such cup, a pivoted or hinged cup, B, which covers the lower end of said pipe, pivoted or hinged to  
40 one side of the pipe or to a staple or bracket driven into or fastened to the bottom of the refrigerator-box, and to the arm of the hinge

is attached a counterbalance-weight, C, as in Fig. 2, or a lever, D, as in Fig. 3. The lever may lead to any convenient part of the refrigerator where it may be easily reached and held in place by any proper means, so that by it (the lever) the cup may be tilted and emptied. This counterbalance-weight is more than equal to the weight of the cup when filled with water, but so little more, however, that when the waste water is caused to accumulate in the waste-pipe by reason of the sediment preventing it flowing away freely the cup will tilt, and thus being relieved of its load the weight C or D carries it up again. With the lever D attached to the cup and leading to a convenient part of the refrigerator, and held by a lug or otherwise, the cup may be tilted by hand, if desired.

I do not wish to be confined to the particular method of pivotally attaching the cup shown, as several methods may be suggested for arranging the cup so that it will automatically tilt and empty itself.

I am aware that tilting cups have been employed in connection with drip-pipes. I do not therefore claim such; but in automatically-operating cups for self-cleansing the pipe and cup I am the original and first inventor of, and

What I claim, and desire to secure by Letters Patent, is—

The combination, with the waste-pipe of a refrigerator or ice-chest, of a cup pivotally attached and having counterbalance-weight, in such a manner that said cup may automatically tilt for emptying itself, substantially as specified.

ROGER JOYCE.

Witnesses:

WM. GERMANN,  
JNO. CONNOR.